

FGCU

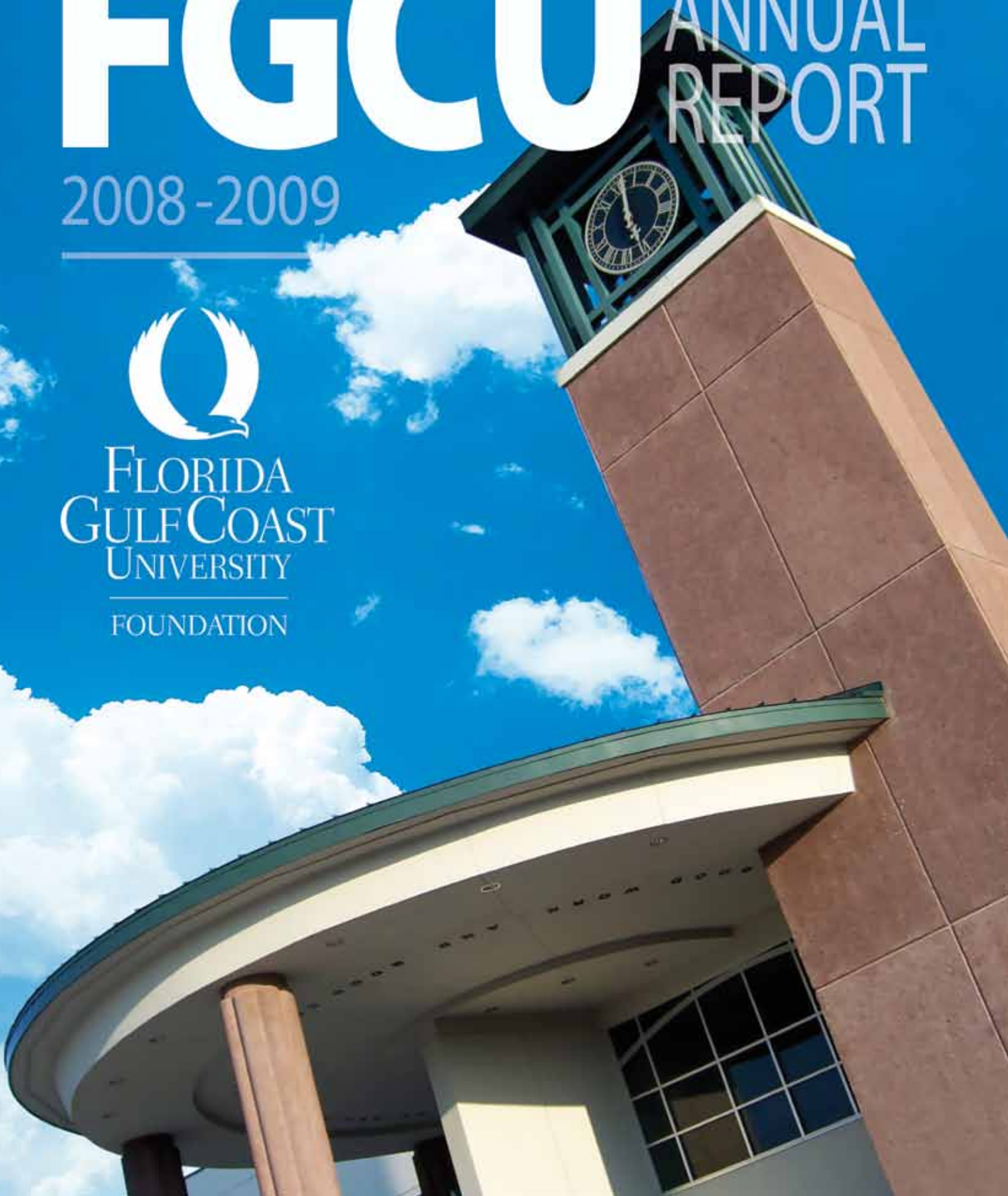
FOUNDATION
ANNUAL
REPORT

2008-2009



FLORIDA
GULF COAST
UNIVERSITY

FOUNDATION



FGCU FOUNDATION BOARD OF DIRECTORS



OFFICERS

Chairperson:

Dr. Stephen S. McIntosh

Vice Chairperson:

Donald Lesch

Treasurer:

James F. Knupp

Secretary:

John D. Fumagalli

Assistant Treasurer:

Dr. Joseph Shepard

Executive Director:

Steve L. Magiera

MEMBERS

Richard C. Ackert*

John R. Alexander

Dr. Joy Arpin**

Cynthia Bennett**

Dr. Fay Biles**

Jack Blais

Dr. Wilson G. Bradshaw

Cornelius Cacho

Joseph R. Catti *

Bradley K. Clark ***

Miller Couse

Barbara DuFrane

Charles B. Edwards, Esq.*

Jeffrey D. Fridkin, Esq.*

Andrea R. Fraser, Esq.

Guenther Gosch

Rep. Tom Grady

Larry Hart

David A. Holmes, Esq.

Laura A. Holquist

William N. Horowitz, Esq.*

Charles K. Idelson *

Sydney W. Kitson

Dr. John R. Little

Edward A. Morton*

James R. Nathan

F. Fred Pezeshkan *

G. David Powell *

Brian Presley**

Thomas J. Rice

James Robinson, Esq.

Dr. J. Michael Rollo

Ambassador Francis

Rooney

Dr. Peter Sidell

Juliet Sproul

Duane Stranahan, Jr., Esq.*

Peter Sulick *

Linda K. Taylor *

Dr. Ronald Toll

Joseph Vumbacco

Dr. Allen S. Weiss

Charles D. Winton

Edward Wotitzky, Esq.**

FOUNDATION FELLOWS

Barron Collier III

Dr. Ben Hill Griffin III



*Chairperson Emeritus / **Term completed June 2009 / ***Deceased

Dear Friends & Alumni,

It has been a year of record growth for Florida Gulf Coast University on many fronts.

Fall enrollment in 2008 topped 10,000 students, then grew by another 1,000 this fall. Our students come from all over Florida, 46 other states and 88 countries, affording those who attend FGCU an opportunity to meet people from diverse backgrounds and cultures.

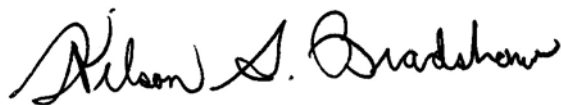
A growing student body requires more and larger classrooms, laboratories and student housing, and the University continues to fulfill these needs. Three impressive buildings, funded in large part by donors, opened during the fiscal year: Lutgert Hall, home of the Lutgert College of Business; Holmes Hall, housing the U.A. Whitaker School of Engineering; and, Sugden Hall, dedicated to the Resort and Hospitality Program. You'll read more about these three magnificent facilities elsewhere in this report.

During the year, construction also began on two much-needed structures: an arts and sciences laboratory building adjacent to Holmes Hall and The Harvey Kapnick Education and Research Center at Naples Botanical Garden, our first permanent Collier County facility.

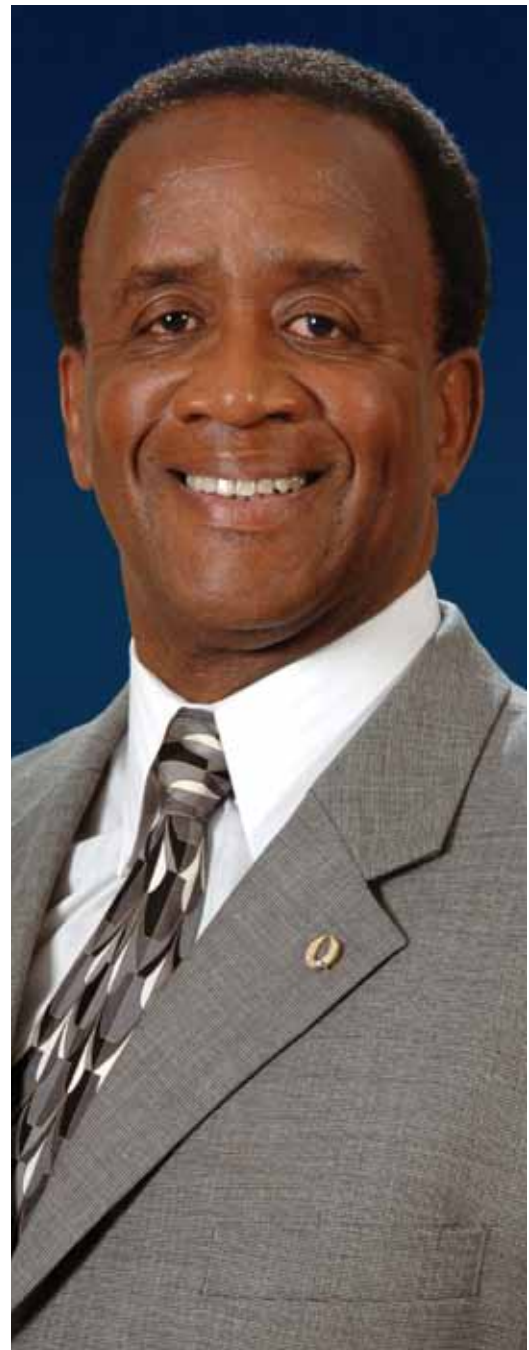
South Village, providing new on-campus housing, opened to 400 first-year students. When completed, South Village will be home to 3,500 FGCU students, in addition to the 2,000 who live in the North Lake Village complex.

I'm particularly proud that FGCU was chosen by the state of Florida as the recipient of a grant to construct a 15-acre solar field that, when completed, will provide the University with 18 percent of the power required to run the campus. We take our environmental mission seriously and the addition of the solar field will contribute to a dramatic reduction in our carbon footprint.

If I sound optimistic about the future of FGCU, that's because I am. With your continued commitment and support, the story of your University will continue to be one of exciting innovations and opportunities.



*Wilson G. Bradshaw, Ph.D.
President*



FLORIDA GULF COAST UNIVERSITY FOUNDATION CHAIRPERSON



Donations from many individuals and businesses raised more than \$10 million to support Florida Gulf Coast University, its programs and students in 2008-09. It is a tribute to this community's residents and their belief in public education that support for FGCU remained strong despite a severe economic recession.

In this report, we share the inspiring stories of generous supporters who are creating legacies and building a major state University to serve Southwest Florida. You will meet Jovan Zepceviski, who embodies the American dream, and is giving back to his adopted country. You will read about The Naples Children and Education Foundation, which prepares at-risk preschoolers to enter elementary school with the skills they need to succeed. You will see how

Chico's gives back to the region it calls home with an endowed scholarship fund.

Donors established 20 new endowments for scholarships and programs that will benefit the University in perpetuity. The Foundation distributed \$1.76 million in scholarship assistance to 884 students in 2008-09, an increase of 27 percent from the previous year.

This year three major new academic buildings opened on campus – Lutgert Hall, Sugden Hall and Holmes Hall. These state-of-the-art facilities were made possible by three renowned Southwest Florida families. Raymond and Beverly Lutgert helped build the new home for the Lutgert College of Business. Herbert and Margaret Sugden made possible a magnificent new facility for the Resort and Hospitality Management Program. And Drs. Burt and Ruth Holmes through The Whitaker Foundation played a major role in making the U.A. Whitaker School of Engineering's new home a reality.

The 2008-09 academic year saw the University expand its presence in Collier County as construction began on FGCU's first permanent Collier County facility, The Harvey Kapnick Education and Research Center at the Naples Botanical Garden.


We are grateful to our donors for your unwavering support. The pages that follow are dedicated to new and long-time friends who, through their generosity, are changing forever the future of our students' lives. None of this would have been possible without the fund-raising support of the FGCU Foundation, for which I am very proud. As you peruse this annual report, perhaps you, too, will be inspired to make public education at FGCU a part of your legacy.

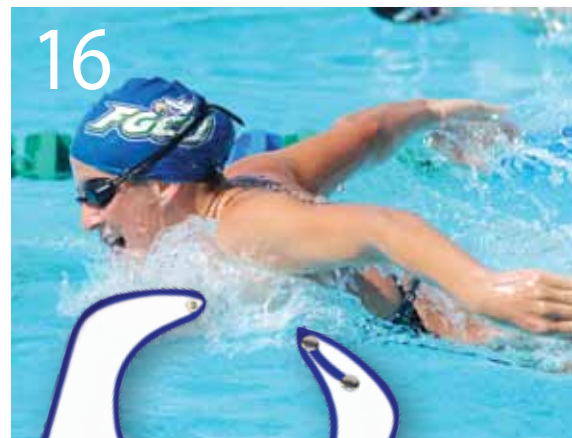
Peter Sulick

Chairperson, 2008-2009

Florida Gulf Coast University Foundation

TABLE OF CONTENTS

	LOOKING TO THE FUTURE	4,5
	FGCU: BY THE NUMBERS	6,7
	BUILDING FOR THE FUTURE	8,9
	LEAD GIFTS	10,11
	SCHOLARSHIPS	12,13
	PLANNED GIVING	14
	PRESIDENT'S SOCIETY	15
	FOUNDER'S CUP GOLF TOURNAMENT	15
	ATHLETICS	16,17
	THE ALUMNI ASSOCIATION	18,19
	FINANCIALS	20,21
	ENDOWED FUNDS	22,23
	HONOR ROLL OF DONORS	24-32



18



This paper was made from trees harvested responsibly through environmentally friendly standards and from well-managed resources.

THE FGCU FOUNDATION ANNUAL REPORT 2008-2009

Wilson G. Bradshaw, Ph.D., President

Steve Magiera, Vice President for University Advancement

Ken Schexnayder, Assistant Vice President, Community Relations and Marketing

Annual Report Editor, Karen Feldman / **Annual Report Designer**, Dave Anderson

Annual Report Photographers, Ed Clement, Jim Dostie, Garth Francis, JC Ridley, Dennis Snyder and Brian Tietz



University focuses on the **future**

While educating today's students, Florida Gulf Coast University looks ahead to plan for the students of tomorrow.

In just a dozen years, FGCU has developed 82 degree programs and constructed 77 buildings that serve more than 11,000 students. Such rapid growth has occurred because of the support of Southwest Floridians who have donated the money, energy and expertise necessary to create a vibrant University, one of a size and scope that would not have been possible with state funding alone.

In spite of the nation's financial woes, FGCU has continued growing, contributing \$389 million in expenditures to the region's economy in 2007-08, the latest figures available. By January 2010, a 15-acre solar farm will supply 18 percent of the University's energy and a new academic building will provide additional classroom and laboratory space. Construction has commenced on the Bower School of Music's new home, adding to what will become an arts corridor that will serve the region.

And yet, as impressive as these developments are, there's still much to be done. Demand for higher education continues to rise throughout the region and the University must respond. By 2014,

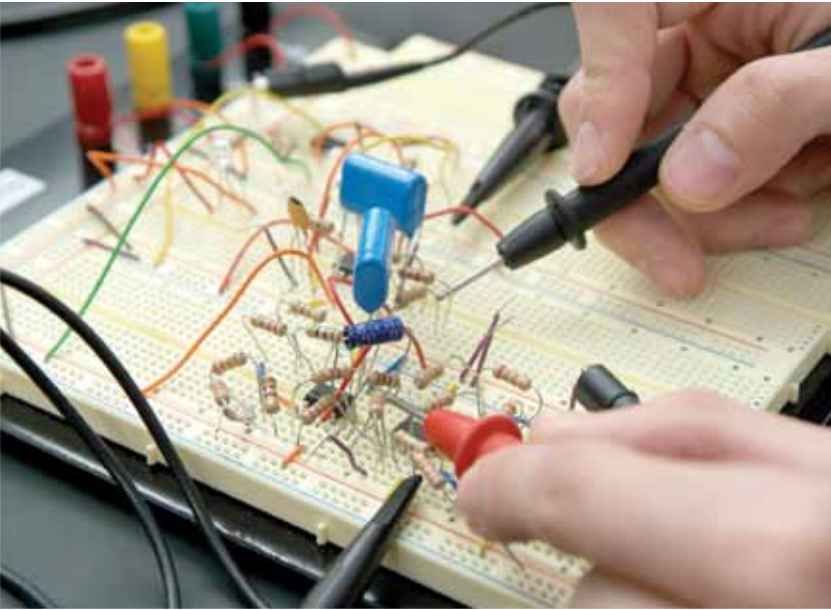
the student body is expected to grow to 15,000.

With a strong commitment to environmental sustainability, cutting-edge research and business programs tailored to the Florida economy, FGCU aspires to expand its programs to meet the needs of the expanding student body and the dynamic community it serves.

The University also must broaden its reach, establishing facilities in Naples, Cape Coral and Charlotte County. Toward that goal The Harvey Kapnick Education and Research Center at Naples Botanical Garden is set to open in January, housing classes and research space. There are plans to build a more expansive Naples Center to serve as home to the Renaissance Academy lifelong learning program, the executive MBA and other graduate programs.

The main campus will require more residence halls, recreational facilities, classrooms and laboratories. Plans to expand athletic opportunities include creating teams for beach volleyball, track and field and, eventually, football.

These are lofty goals for such a young institution. But Southwest Florida is a region that attracts visionaries with larger-than-life ambitions. It is that kind of foresight that will lead FGCU to realize its full potential.



BY THE NUMBERS

STUDENT DEMOGRAPHICS*

ENROLLMENT

11,119

as of fall 2009-10,
9,508 undergraduates;
1,049 graduates;
562 non-degree seeking

AVERAGE AGE

24

(compared to 29 in 2000
and 32 in 1997)

COME FROM

46 states

and the District of
Columbia plus
88 countries outside
the United States

FROM FLORIDA

90% from Florida;
55% from SW Florida
(34% from Lee County,
17% from Collier County,
3% from Charlotte County)

RESIDE ON CAMPUS

2,768

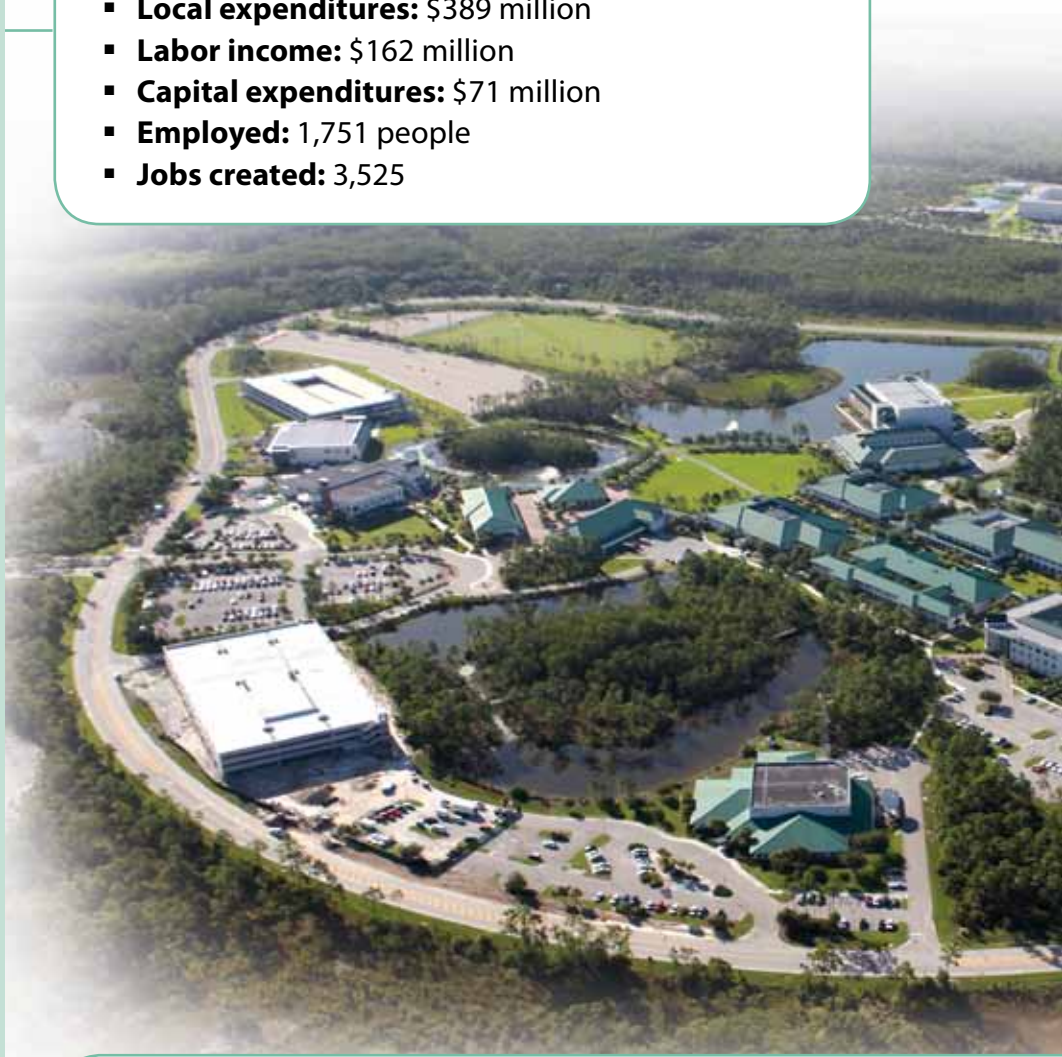
(full capacity)

AVERAGE GPA

3.1

UNIVERSITY'S ECONOMIC IMPACT ON REGION (2007-08):

- **Local expenditures:** \$389 million
- **Labor income:** \$162 million
- **Capital expenditures:** \$71 million
- **Employed:** 1,751 people
- **Jobs created:** 3,525



ENVIRONMENTAL STEWARDSHIP:

- A new 15-acre solar farm supplies 18 percent of the University's energy needs.
- President Wilson G. Bradshaw is a member of the leadership circle of the American College and University Presidents' Climate Commitment.

* Preliminary figures for Fall 2009

HONORS

- **Lutgert College of Business** named one of the nation's top business schools in The Princeton Review's 2010 and 2009 editions of "Best 301 Business Schools"
- **The Carnegie Foundation** recognized FGCU as one of 111 U.S. educational institutions that meets its criteria for community engagement as well as outreach and partnerships

INTERNATIONAL PARTNERSHIPS

FGCU has formal exchange programs with universities in China, France, Germany, Great Britain, Mexico, New Zealand and Sweden.

- An ice thermal storage plant sends chilled water through an underground loop that cools campus buildings, saving more than \$1.64 million over five years.
- All students are required to take at least one environmentally based colloquium course.

CAMPUS

SIZE

760
acres

BUILDINGS

77 on campus,
2 off campus

ORGANIZATIONS

122 registered clubs,
plus **16** sports clubs

ATHLETICS

14 NCAA Division I teams,
competing in the Atlantic
Sun Conference

RESEARCH

GRANTS AWARDED:

\$14.8 million (in 2008-09),
\$14 million (2007-08)
\$3 million (1997-98)

PATENTS APPLIED FOR

8

COMMUNITY SERVICE

122,938 hours service
learning performed July
2008-June 2009; **784,874**
hours performed since 1997

COMMUNICATION

Home to **WGCU**,
the region's public radio
and television stations

BUILDING FOR THE **FUTURE**

Donors help University build firm foundation

With 77 buildings so far and more on the way, it's hard to believe that the first structures arose less than 15 years ago.

Certainly state funding has figured prominently in the University's development, but generous private donors with foresight are responsible for the speed with which it has occurred. Those benefactors have also played critical roles in guiding the direction of the University's growth.



LUTGERT HALL



HOLMES HALL

Three shining examples of this influence and support have taken shape in the form of state-of-the-art buildings that opened over the past year. Lutgert, Sugden and Holmes halls serve as the homes for three programs that resulted from community demand. Here's a look at each:

Holmes Hall

The \$24.4-million building, which opened in January 2009, houses the U.A. Whitaker School of Engineering, a training ground for 21st-century engineers as well as computer science professionals.

The five-year-old program was launched with a \$5-million lead gift from The Whitaker Foundation and is named in honor of philanthropists G. Burt Holmes and his wife, Ruth Whitaker Holmes, daughter of U.A. Whitaker.

The 70,000-square-foot, four-story structure affords ample space and resources for bioengineering, as well as civil and environmental engineering and computer science programs. In addition to technical work areas, there are study areas tailored to collaboration and lounges designed to facilitate socializing. The hall also boasts a variety of green building features.

Lutgert Hall

The imposing, four-story building is the first one visitors encounter as they enter the University's main entrance, with its sculpture "Human Race," created by benefactor Raymond Lutgert, overlooking a reflecting pool.

Raymond and Beverly Lutgert's \$5-million gift jump-started the effort to build the hall. Their generous gift was matched by the state. Many other supporters followed their lead, making the \$19.4-million, 62,000-square-foot building a reality. It opened in fall 2008.

The result is that all branches of the Lutgert College of Business are now housed under one roof for the first time. The hall serves as a training center for tomorrow's entrepreneurs and business leaders.

Herbert J. Sugden Hall

In a region in which tourism is a major industry, FGCU's Resort and Hospitality Management Program has proven to be popular and pertinent. The opening of Sugden Hall provides a consummate training ground for the industry's future leaders.

The 37,000-square-foot building, which opened in the spring of 2009, was made possible through the generosity of Herbert J. and Margaret S. Sugden, long-time Naples residents and major philanthropists, and their family.

The Sugdens donated \$5 million to start the program and helped build the hall that bears their name.

Sugden Hall functions as a working laboratory, preparing students for high-demand careers such as resort, private club, spa, hotel, event, time share, restaurant and tourism destination management. It also houses a PGA-accredited Professional Golf Management program, one of 20 in the nation, which boasts a club repair shop, simulated full-swing stations, putting green area and retail pro shop.



LEAD GIFTS



Jovan Zepcevski

Self-made engineer helps students build successful lives

Armed with a solid education and the drive to succeed, Yugoslavian-born Jovan Zepcevski made his American dream a reality.

He left behind his communist homeland to come to the United States, where he built a free and successful life for himself as a civil engineer.

Because he understands how important education is to individual success and society in general, he's chosen to support Florida Gulf Coast University's engineering program

with donations that will fund scholarships and assist in equipping Holmes Hall, the home of the U.A. Whitaker School of Engineering.

"The more education, the better for everybody, not just the kids who get educated, but everybody around them," he says.

Zepcevski pledged \$200,000 to name the Zep Construction Suite on the first floor of Holmes Hall. The University will apply to the state for matching funds, bringing the gift's value to \$400,000. The suite includes

a teaching laboratory and a studio classroom. The money will purchase scientific equipment for Holmes Hall.

He also pledged another \$100,000 to establish the Jovan Zepcevski Engineering Scholarship Fund. FGCU will apply for 50 percent in matching funds, making the gift worth \$150,000. Scholarships will be awarded to civil engineering majors in their junior or senior years who demonstrate financial need and have GPAs of 3.3 or more.

"Both of these opportunities will make for a stronger civil engineering program," says Robert O'Neill, chair of the school's Department of Environmental and Civil Engineering.

Zepcevski saw yet another need he could fill at FGCU. When he learned the engineering program did not have a utility golf cart with which to transport materials into the field for survey classes, he purchased one and had it delivered to Holmes Hall.

"I'm in a position to help," he says. "It's good for the kids because they are the ones who are going to carry this country forward. I hope they do more than we did."

Today, he owns and operates Zep Construction, Inc., in Fort Myers. It's worlds away from the Republic of Macedonia, formerly part of Yugoslavia, where he grew up and trained to become an engineer. Named the country's best young engineer by a government-run agency that operated water-control structures, he went to work for that agency shortly after graduating.

It was a promising start, but he wanted more.

"I always dreamed of coming to the United States, to a free country with

ZEPCEVSKI CONTINUED

so much opportunity," he says.

He obtained a visa to study in Great Britain, but went to work there instead, then moved to Belfast, Ireland, to work and learn English. He applied for a visa to enter the United States and, because civil structural engineers were in demand, soon received one.

"I got my green card in the mail and a week later, I left my old car at the airport and came here," he says.

He landed in New York City with \$100 in his pocket and was down to his last dollar when he landed a job as part of a team building a bridge in Chester, Pa. He went on to become a city engineer for Lorain, Ohio.

He earned his Professional Engineer

designation, then took a contract job with the U.S. Army Corps of Engineers to build one of the biggest pump stations on Lake Okeechobee in Clewiston. When it was finished two years later, he was ready to go independent.

In 1973, he formed Zep Construction and got his first job – to build a small bridge and seawall for the Fort Myers Golf Course along McGregor Boulevard.

His company continues to operate from its Fort Myers base to this day.

Over 36 years, he's worked on many bridges and other structures in the region, most recently the high-profile Estero overpass on Interstate 75.

Life has turned out as he'd hoped. "It's exciting to get up every morning and try to solve problems, to try

to make new things. I'm blessed to be in this kind of business," he says. "I never could have accomplished everything I have if I hadn't come to the United States."

His success has enabled him to help his children, other family members and many other young people pay for college. Now he's helping other aspiring young engineers build successful careers, too.

"Mr. Zepcevski provides an excellent example to students of how far one can go in spite of challenging beginnings and of how important it is to help others along the way," says Susan Blanchard, founding director of the U.A. Whitaker School of Engineering. "We are very fortunate to have this generous supporter among our benefactors."

Programs build better students through reading

Reading and language skills provide the structure upon which an education is built. Research shows that children who enter kindergarten with solid reading and language skills are more likely to succeed and stay in school.

That's what the Early Literacy and Learning Model (ELLM) and Wings on Words (WOW) Initiative seek to accomplish. The Naples Children and Education Foundation funds the programs that provide educational enrichment to more than 1,000 Collier County preschoolers who might be at risk because of poverty or language barriers.

The NCEF-funded programs provide literacy coaches who work

with teachers in pre-K classrooms, developing lesson plans and student activities. The program also provides engaging materials and classroom libraries for children.

With the \$450,000 provided by NCEF, Florida Gulf Coast University administers the program in sites such as Guadalupe Center, Redlands Christian Migrant Association, and numerous Head Start classrooms.

Studies indicate the program helps

teachers become more effective in teaching these vital skills. Assessment tests show that 95 percent of the children who participate show improved English vocabulary skills

"The trustees of the NCEF are extremely pleased with the results recently shared of the great success rate that the students in the program are achieving," says Joan Clifford, an NCEF trustee and member of the grant committee. "The programs have definitely narrowed the gap considerably between the ELLM children and their more affluent peers as they enter kindergarten together in the public school system. We are very encouraged to see these tremendous results."



Opening doors to higher education

Scholarships have always played critical roles in opening the doors to higher education, but with the nation's current economic woes, a shortfall in state funding and ever-increasing costs, they matter more than ever.

Increasingly, money can be the determining factor in whether students have an opportunity to further their educations and, in the process, enhance their chances for successful careers and satisfying lives. For others, scholarships are tangible proof of their educational accomplishments and serve to inspire them to continue on this path.

In the 2008-09 academic year, the Florida Gulf Coast University Foundation awarded \$1.76 million in scholarships, an increase of 27 percent from the previous year. The figure includes \$384,000 in First Generation scholarships to students who are the first in their families to pursue baccalaureate degrees. In all, 884 students received scholarships.

The scholarships come from established endowed funds that continue in perpetuity. An endowment can be established with a minimum gift of \$10,000 that may be paid over time. The fund is carefully invested and proceeds from the endowment are awarded as scholarships each year. The contributors name the scholarship funds and determine the criteria for awarding them. The state of Florida matches endowment gifts of \$100,000 or more. Matches range from 50 percent to 100 percent, based on the size of the contribution.

ENDOWED FUNDS ESTABLISHED IN 2008-09

- ◆ Cynthia A. Bennett Scholarship Endowed Fund
- ◆ Joseph "Joe" Collier Memorial Scholarship Endowed Fund
- ◆ The John C. Dacey Award for Endeavor
- ◆ Jules Freeman Scholarship Endowed Fund
- ◆ Honors Program Endowed Fund
- ◆ Charlie Kleman Scholarship Fund
- ◆ M. William and Marilyn Lightner Scholarship Fund
- ◆ Paul J. Marinelli Scholarship Fund for Excellence in Academics and Leadership
- ◆ Roger and Nancy McCabe Scholarship Fund
- ◆ Andrew McGillen Memorial Scholarship Endowed Fund
- ◆ The Elissa Manna Fund for Mechanical Engineering - In Memory of Anthony F. Manna
- ◆ Naples Town Hall Scholarship - In Honor of Barbara and Earle Borman Endowed Fund
- ◆ Marion W. Routh Memorial Scholarship Endowed Fund
- ◆ Arthur W. Tunnell, Jr. Accounting Scholarship
- ◆ Dolph and Sharon von Arx Scholarship Fund
- ◆ Wanderlust Scholarship Endowed Fund
- ◆ Jovan Zepcevski Engineering Scholarship Endowed Fund

Jean Benson's 13 annual gifts benefit students

From the time that Florida Gulf Coast University opened in 1997, Jean Benson was a supporter.

The Naples resident made 13 consecutive year-end gifts, donating cash and appreciated stocks that helped make one of the nation's newest universities among the fastest growing as well.

"I want to support FGCU annually, for it is a shining asset in Southwest Florida," she said in 2005.

The long-time resident of The Glen-

view at Pelican Bay died March 27.

She directed the bulk of her gifts to scholarships, establishing two endowed funds, the Mrs. Keith S. Benson Scholarship Fund and the Jean S. Benson Scholarship Fund. Over the past decade, 95 students have benefited from these scholarships. Both funds will continue to produce scholarships in her name in perpetuity.

"She visited campus whenever Glenview residents toured FGCU to see and hear about the University's



Jean Benson

growth and research, and encouraged others to take an interest in our students," says Steve Magiera, executive

director for the FGCU Foundation. "She was a gracious and elegant lady. She will be missed by those of us who knew her and remembered forever for her generosity to FGCU students."

Gift establishes scholarship, world affairs program

Neuropsychiatrist Erich Liebert devoted his life to research, education and healing.

To honor his memory, his widow, Bernice Bongiorno, left her charitable remainder trust to Florida Gulf Coast University, endowing two funds that will serve as lasting tributes.

Her gift of \$314,798 qualifies for a 50 percent match from the state, making it worth more than \$477,000. The donation establishes the Dr. Erich Liebert World Affairs Program Endowment and the Dr. Erich Liebert Endowed Scholarship Fund.

The first will fund a pre-eminent scholar who will speak at the University and throughout the community as well as spend time on campus exploring challenging issues of the day with students, faculty and staff. The scholar may also prepare monographs that would become part of the FGCU Library permanent collection and perform other duties that would focus on world challenges and the role of higher education in solving them.



Erich Liebert and Bernice Liebert Bongiorno with infant Pamela Liebert

part of each winter on Fort Myers Beach as far back as the 1950s.

The couple's daughter, Pamela Liebert, of Bonita Springs, says of her parents, "He was the love her life and she wanted to make a gift that would honor him. She knew he loved teaching and thought this was

a good way to accomplish that."

Dr. Liebert held a professorship at Northwestern University's Feinberg School of Medicine, practiced medicine in Chicago and conducted research into psychiatric illness. He was the clinical director of Elgin State Hospital and an American Academy of Neurology fellow.

The second fund will award scholarships to students with financial need who pursue fine arts degrees, preferably in music, and demonstrate service to the community.

Mrs. Bongiorno died in March 2008 at age 92. Her first husband, Dr. Liebert, died in 1960. The couple lived in Elgin, Ill., for many years, spending

Former Chico's CFO honored with scholarship fund

Charlie Kleman played a pivotal role at Chico's FAS for close to two decades.

He started working with the company when it was a small Sanibel-based family operation and helped it grow to become a national corporation with three brands and more than 1,000 stores.

When he retired earlier this year, Chico's management decided to



Charlie Kleman

create a lasting tribute to him by establishing a scholarship endowed fund at Florida Gulf Coast University in his honor. The company gave \$200,000, which will be matched with

\$100,000 by the state of Florida.

The Charlie Kleman Scholarship Fund will award about \$15,000 a year to degree-seeking undergraduates who graduated from Lee County secondary schools or colleges, who major in accounting, business or finance, have demonstrated community service and are in good standing academically.

The scholarship will generate funds in perpetuity.

Estate gifts create legacies for donors, opportunities for students

By remembering Florida Gulf Coast University in their wills, donors can leave legacies that endure through the ages.

An endowed fund creates a lasting legacy for the family name, recognizing the givers for their generosity.

The method of giving can be tailored to the wishes of individual donors. Some choose to donate anonymously so that the University learns of their generosity when the gift arrives. Other supporters prefer to announce their gifts before they die, affording them the opportunity to become more involved with the University by attending events with students, faculty and staff, and getting a first-hand look at the programs their gifts will enhance.

Through such gifts, donors may establish endowed chairs or expand the scope of programs about which they care passionately, thereby enriching the educational experience for students.

By choosing to make estate gifts to FGCU, donors may ensure they take care of their health and family members first, then apply the remaining funds to programs or scholarships that are important to them.

Through the generous support of estate gifts, FGCU can make a real difference in the lives of students and in the community at large.

THE HERITAGE SOCIETY

Established in 2005, recognizes alumni and friends who have included Florida Gulf Coast University as a beneficiary in their estate plans through generally irrevocable deferred gifts such as charitable gift annuities, charitable remainder trusts, and retained life estates.

- ◆ Anonymous
- ◆ Mr. and Mrs. Gray C. Ballman
- ◆ William* and Kathryn Beeken
- ◆ Richard and Sandy Bishop
- ◆ Dr. and Mrs. Amal K. Das
- ◆ Dr. and Mrs. George Fisher
- ◆ George and Rebecca Fogg
- ◆ Mary V. Hull

THE COVENANT SOCIETY

Established in 2005, recognizes alumni and friends who have included Florida Gulf Coast University as a beneficiary in their estate plans through generally revocable deferred gifts such as wills, living trusts, life insurance policies and qualified retirement accounts.

- ◆ Mr. and Mrs. Richard C. Ackert
- ◆ Anonymous
- ◆ Joan and William Attridge
- ◆ Mr. Bedford H. and Dr. Fay R. Biles
- ◆ Steve Bostwick
- ◆ Jane S. Brenner
- ◆ Dianna P. Durbin
- ◆ The Bill Eshbaugh Family
- ◆ George and Rebecca Fogg
- ◆ Mary K. Gallagher
- ◆ John and Dorothy Guigon
- ◆ Sandra and Alan Kaplan
- ◆ Edward T. and Esther W. Kuss*
- ◆ Martin* and Patricia Latter
- ◆ Dr. John R. and Mrs. Veora Little
- ◆ Elissa D. Manna
- ◆ Michael B. Peceri
- ◆ Harry W.* and Ruth M. Service
- ◆ Robert W. Shrader

COVENANT SOCIETY CONT'D

- ◆ Dr. E. J. Arpin-Sypert and Dr. George W. Sypert
- ◆ John and Constance* Temoyan
- ◆ Keith and Doris Trowbridge
- ◆ Herbert J.* and Barbara S. Wolfe
- ◆ Dr. Bonnie L. Yegidis

THE LEGACY SOCIETY

Established in 2005, recognizes alumni and friends who have made estate distributions to Florida Gulf Coast University. These definitive gifts have contributed to FGCU's ability to provide outstanding higher education and public service throughout Southwest Florida.

- ◆ Bernice J. Bongiorno*
- ◆ Lillian and Clay Clukies*
- ◆ Elizabeth A. and Jack A. Conner*
- ◆ Marian E. Davis*
- ◆ Dr. Edith Potter Deats*
- ◆ Robert L. DuGene*
- ◆ Evelyn L. Egan*
- ◆ Ruth L. Faith*
- ◆ Marguerite and Guy Howard*
- ◆ Pop and Marjorie H. Kelly*
- ◆ Mabel and Arnold Keys*
- ◆ Donald and Elizabeth Manchester*
- ◆ Helen E. Nestor*
- ◆ James D. and Eleanor F. Newton*
- ◆ Thelma B. and Edwin M. Oulton*
- ◆ Marlin F. and Alice M. Perry*
- ◆ Mary I. Peterson*
- ◆ Frances V. Riley*
- ◆ Frances B. Setterblade*
- ◆ Richard W. and Esther A. Shaughnessy*
- ◆ Hans and Erna Siebert*
- ◆ Grace J. Sneckenberger*
- ◆ C. Gilbert and Emma Spies*
- ◆ Richard W. Steves*
- ◆ Alex and Patience Stom*
- ◆ Mary B. Ullman*
- ◆ George C. Van Rhee*

* Deceased

President's Society builds strong bond

Florida Gulf Coast University donors who make annual gifts of \$1,000 or more to The President's Society provide continuing support for student success, while building strong ties to the University.

There are currently 85 members in this premier annual giving society, which helps fund start-up programs that promote critical thinking and intellectual engagement among students and faculty. Members also enjoy several prestigious University events, including the annual President's celebratory brunch in their honor.

Among the programs such donations have funded are the Adaptive Sports Expo, the First Generation Scholarship Program, the Dominican Republic Service Learning



John Guigon, FGCU President Wilson G. Bradshaw and Dorothy Guigon

Project and the freshman convocation. Charter members John and Dorothy Guigon have supported The President's Society since its inception in 2003. They have enjoyed getting to know the University presidents, other members of the society and some of the students their funds have

supported.

"We believe it's critically important, particularly in these stressful financial times, to continue active support of The President's Society," says John Guigon. "FGCU is at a developmental crossroad and, if it is to prosper in the long run,

attention must continue to be given to its scholastic, social and athletic initiatives."

Members of The President's Society have established a vital tradition of philanthropy and caring that benefit FGCU students today and into the future.

Founder's Cup Golf Tournament a popular annual tradition

In its 17th year, Florida Gulf Coast University's Founder's Cup Golf Tournament has become a tradition, eagerly anticipated by participants, many of whom return year after year.

The benefit event began in 1991 as the University's first fundraiser. Since 2002, it's been held at Mediterra, Bonita Bay Group's master-planned community in North Naples.

Contributors donated \$60,000 during the 2008 event, bringing the total raised through the

years to \$850,000.

"We are fortunate to have such a generous business community," says FGCU President Wilson G. Bradshaw. "The funds raised from the tournament are used in Southwest Florida to enhance our programs in the sciences, education and athletics."

Along with Bonita Bay Group, other major sponsors of the 2008 tournament included: Estero Bay Chevrolet, AJAX Building Corp., Five County Insurance,

Johnson Controls, Kraft Construction, Service Painting, Wayne Wiles Floor Coverings, University Housing Service and GRAEF.

Through a day on the links, as well as black-tie galas, campus-wide celebrations and other special events, the FGCU Foundation works to increase awareness about the opportunities and resources FGCU brings to the region and the importance of supporting them.

Events also get people involved, often for the first time, in the wealth of activities and programs FGCU offers throughout the region.



Athletics program scores on and off the field

Florida Gulf Coast University's student-athletes are triple threats, excelling at their sports, in academics and in community service.

In two years of Division I competition, FGCU's 14 teams have made strong showings in the Atlantic Sun Conference and beyond. Besides their success in their respective sports, the student-athletes' overall GPA stands at almost 3.2 and 108 student-athletes achieved A-Sun All-Academic honors during the 2008-09 academic year.

"The quality of the student-athletes shows in everything they do," says Stanley Perchan, director of athletic advancement. "We've had an extremely successful transition to Division I, winning six A-Sun conference championships. In addition, our students did thousands of hours of community service this year all over the region."

Conference championships include: the baseball team, winning both years, making it the first A-Sun team to do that since 1980; volleyball with consecutive titles as well as softball (ranked #23 nationally) and women's basketball (back-to-back WNIT second-round appearances) earning A-Sun championships. The women's swimming and diving team also captured the Coastal Collegiate Swimming Association championship.

Student-athletes volunteer in all sorts of community projects, including running sports clinics for youngsters, visiting patients at the Children's Hospital of Southwest Florida, lending

a hand with Habitat for Humanity, and helping children learn to write and understand math.

"The student-athletes work hard and our coaches are dedicated to helping them succeed on and off their playing venue," Perchan says.

Another highlight of the 2008-09 academic year was the June arrival of Ken Kavanagh as the new director of athletics. He comes from Peoria, Ill., where he held the same post at Bradley University for 13 years. He's excited to come to FGCU just as it enters the second phase of the Division I transition: In the 2009-'10 academic year, both the volleyball and baseball teams are eligible for post-season play.

One goal, according to Kavanagh: "We'd love to be considered a flagship program within the Atlantic Sun Conference as we continue to mature as a Division I member."

FGCU athletics have strong community support. Many individuals and businesses have generously contributed to the program, which has permitted it to grow rapidly. Membership in the Eagles booster organization continues to build as area residents lend their support through contributions and by cheering them on at games.





Men's Cross Country — Finished 7th out of 11 teams at the Atlantic Sun Conference Championships.

Men's Golf — Finished 5th out of 11 teams at the Atlantic Sun Championships, finished 1st at the North-South Intercollegiate Tournament.

Women's Cross Country — Finished 9th out of 11 teams at the Atlantic Sun Conference Championships.

Women's Golf — Finished 5th out of 10 teams at the Atlantic Sun Championships, 2nd at the Northern Illinois University Spring Lake Intercollegiate.

FGCU TEAM	WON	LOST	TIE
Baseball	36	18	
Men's Basketball	11	20	
Men's Soccer	6	10	2
Men's Tennis	5	15	
Women's Basketball	26	5	
Women's Soccer	10	4	3
Softball	47	9	
Swimming & Diving	11	4	
Women's Tennis	6	16	
Volleyball	20	8	

Graduates stay connected through Alumni Association

Florida Gulf Coast University reached a significant milestone this year, as the 10,000th student graduated. The Alumni Association continues to provide the burgeoning number of FGCU graduates with the tools they need to stay connected to their alma mater and one another.

Alumni connect through special events, programs and services, the FGCU alumni newsletter, *Pinnacle* magazine, plus online social networks such as Facebook and LinkedIn, all of which helps increase alumni involvement.

“Our alumni are beginning to realize the full potential their participation has on both the Alumni Association and the University, and they want to make a positive impact,” says Lindsey Touchette, director of alumni relations.

Involvement with events, support of annual fundraisers (such as Dollars for FGCU Scholars), class reunions, community service projects and educational receptions would not be possible without the efforts of alumni donors, association members and volunteers.

“It has been an honor to have the opportunity to work with such a dedicated group of volunteers and board members,” says Cynthia Bennett, '99, chair emerita of FGCU's Alumni Association. “Our Alumni Association is FGCU's lifeline to the outside world. Our alumni are FGCU's best ambassadors and our commitment to FGCU is vital to its success.”



Lindsey Touchette and Cynthia Bennett



10,199

Total alumni

10,689

Degrees awarded

**Top five states
in which
alumni live:**

Florida: 7,360

Georgia: 90

New York: 67

North Carolina: 64

Illinois: 54

The FGCU Alumni Association board of directors and staff thank the members and contributors for their support

1998

- ♦ Paul Allen
- ♦ Jeffrey Lavelle
- ♦ Nina Schwartz
- ♦ Jennifer Sparrow

1999

- ♦ Cynthia Bennett
- ♦ Tonya Brown
- ♦ Kimberly (Trombly) Cambareri
- ♦ Duncan Fields
- ♦ Patricia Gordin
- ♦ Kenneth Kemp
- ♦ Wendy Key-Buxton
- ♦ Judy Knizner
- ♦ Lorraine (Tortorella) McCann
- ♦ Jennifer (Jordan) McGurk
- ♦ Gary Page
- ♦ James Robinson
- ♦ Aida Saldivar
- ♦ Wanda Wagner
- ♦ David White

2000

- ♦ Rebecca (Barber) Antonucci
- ♦ Yvonne Blair
- ♦ Deborah Brown
- ♦ Jennifer (Parker) Cavenago
- ♦ Carlos Cavenago
- ♦ Andrea (Nimnuan) Cousins
- ♦ James Fritz
- ♦ Cherie Grieco
- ♦ Deber Harris
- ♦ Laura (Timmers) Holquist
- ♦ Linda Kraatz
- ♦ Lee LeBlanc
- ♦ Rebecca Maglott
- ♦ Rose McGahee
- ♦ Charles Mesloh
- ♦ Penny (Mercer) Mourer
- ♦ Adam Musolino
- ♦ Carol Newcomb-Jones
- ♦ Gregory Pacter
- ♦ Kimberly Philbin
- ♦ Jacob Scott
- ♦ David Vazquez

2001

- ♦ Mary Banks
- ♦ Susan Byars
- ♦ Gaye Chrobak
- ♦ Cheryl Cohen
- ♦ Jacqueline Conrecode
- ♦ James Dilling
- ♦ Tracy (Shonak) Fisher
- ♦ Jan (Rogers) Frick
- ♦ Kevin Gaffney
- ♦ Carolynne Gischel
- ♦ James Grimes
- ♦ Sharon Jenkins-Owen
- ♦ Erik Larsen
- ♦ Paul Martin
- ♦ Laura Pacter
- ♦ Laura (McLean) Phillips
- ♦ Pamela Prochaska
- ♦ Tara Ruska
- ♦ Amy (Berczik) Sand
- ♦ Ruthann Sovis
- ♦ J. Rodney Watson
- ♦ Michael Willis

2002

- ♦ Barbara Andrews
- ♦ Isaac Brundage
- ♦ Vanessa Clarke
- ♦ Orv Curry
- ♦ Beth (Watkins) Dickey
- ♦ Deborah (Rhodes) Elias
- ♦ Susan Evans
- ♦ Martin Flack
- ♦ Amy (Estes) Gaffney
- ♦ Tucker Greene
- ♦ Molly (Keirnes) Grubbs
- ♦ Jennifer James-Mesloh
- ♦ Jennifer (Faramo) Laderer
- ♦ Karen Landy
- ♦ Richard Lavoilette
- ♦ Lucy (Schreiber) Papp
- ♦ Julie Smith
- ♦ Brian Tarrant
- ♦ Kimberly Tartaglione

- ♦ Nola (Ilchene) Theiss
- ♦ Gustavo Urbina
- ♦ Rae Vanderheyden
- ♦ Tamara Zockl

2003

- ♦ Rebecca Ali
- ♦ Warren Anderson
- ♦ Lisa Beasley
- ♦ Lenore Benefield
- ♦ Douglas Bladich
- ♦ Gerard Carrington
- ♦ Nathan Chouinard
- ♦ Jennifer Crabill
- ♦ Brent Evans
- ♦ Thomas Gardner
- ♦ Robert Gerrick
- ♦ Jacqueline Gregory
- ♦ Brian Jones
- ♦ Darius Joseph
- ♦ Melissa Layner
- ♦ Garry Long
- ♦ Carol (Dalia) Lopez Rosado
- ♦ Jorge Lopez
- ♦ Steve Magiera
- ♦ Shirley (Bishop) Mann
- ♦ Molly Meadows
- ♦ Barbara Miller
- ♦ Christina Miller
- ♦ Patrick O'Connell
- ♦ Brad Phelps
- ♦ Laura Rutizer
- ♦ Gary Schwartz
- ♦ Marcela Shepard
- ♦ Jennifer Snider
- ♦ John Waligora
- ♦ Melanie Werley

2004

- ♦ Jennifer Alvarez
- ♦ Ashley Armstrong
- ♦ Fernand Billon
- ♦ Diane Blozis
- ♦ Julie Collier
- ♦ Susan Cone
- ♦ Avrielle (Stanley) Davis
- ♦ Pamela Debus
- ♦ Cristina Dimas
- ♦ Ellen Edmeades
- ♦ Jeanne (LaCost) Ezcurra
- ♦ Jeffrey Faramo
- ♦ Colette Fritts
- ♦ Heidi (Sell) Goodman
- ♦ Amber Greco
- ♦ Angela Hodge
- ♦ Rebecca (Yost) Hollingshead
- ♦ Jay Kollar
- ♦ Patrick Mark Mahony
- ♦ Victoria McConnell
- ♦ Krystal Nimsger
- ♦ Patricia Pasden
- ♦ John Paul

- ♦ Jonathon Pentecost
- ♦ Stephen Petrikas
- ♦ Kevin Price
- ♦ David Quinn
- ♦ Sissel Robertson
- ♦ Frank Scerbo
- ♦ Laura Schnizler
- ♦ Teresa Soud
- ♦ Kristen (Prestwood) Vuknic
- ♦ Jill Waruszewski
- ♦ Ruth Worman

2005

- ♦ Christina Anderson
- ♦ Michael Aybar
- ♦ Amy (Arnold) Benvie
- ♦ Elizabeth Burris
- ♦ Harry Casimir
- ♦ Ashley Coone
- ♦ David Cox
- ♦ Courtney Curatolo
- ♦ Marc Devisse
- ♦ Zachary Eaton
- ♦ Melissa Felice
- ♦ Amanda Fortuna
- ♦ Ryan Frost
- ♦ Timothy Haffner
- ♦ Julie Heuer
- ♦ Elizabeth Hill
- ♦ Brandon Hollingshead
- ♦ Sonia Karth
- ♦ Emily (Austin) Larsen
- ♦ Kerry Layden
- ♦ Lynn Lee
- ♦ Leonard Maciejewski
- ♦ Norma Mahler
- ♦ Kelly McCarthy
- ♦ Catherine (Place) Mummert
- ♦ Casey (Bates) Nemic
- ♦ Judith Nothdurft
- ♦ Karen Phillips
- ♦ Ashley (Townsend) Primus
- ♦ Jermaine Primus
- ♦ Loren Prive
- ♦ Kristina Rodriguez
- ♦ Deanna Saracki
- ♦ Pamela St. Laurent
- ♦ Lindsey (Brower) Touchette
- ♦ Nathan Touchette
- ♦ Mathew Visaggio
- ♦ Erin Wenzel
- ♦ Melissa White
- ♦ Joshua Yanapa
- ♦ Brian Zamorski

2007

- ♦ Lisa Adams
- ♦ Angela (Meadows) Baca
- ♦ Megan Barr
- ♦ Kristen Bartos
- ♦ Kimberly Bracher
- ♦ Amy Brewster
- ♦ Sharon Brotherton
- ♦ Chrysten Burzio
- ♦ Joshua Campbell
- ♦ Timothy Clark
- ♦ Todd Cofer
- ♦ Donna Coleman
- ♦ Tanya Collins
- ♦ Kenneth Czwojdak
- ♦ Bernard Davis
- ♦ Karen DeSantis
- ♦ Adam Francis
- ♦ Carolyn (Williams) Greene
- ♦ Tyler Hamilton
- ♦ Nakisha Harris

2006

- ♦ Sandra Alexander
- ♦ David Baze

- ♦ Marie-Josée Hebert
- ♦ Nadine Heeger
- ♦ Michael Hoyt
- ♦ Nicole Ingelido
- ♦ Douglas Jarrett
- ♦ William Kobrin
- ♦ Peter Lechler
- ♦ Rebecca Loiacano
- ♦ Jerry Ma
- ♦ Thomas MacIvor
- ♦ AnaTeresa Marrero
- ♦ Melissa Michel
- ♦ Justin Miller
- ♦ Yonilee Miller
- ♦ Baldwin Miranda
- ♦ Michael Muder
- ♦ Annette Naqui
- ♦ Levi Pancake
- ♦ Elizabeth Perez
- ♦ Joyce (Evans) Prive
- ♦ April (Rogers) Rhodes
- ♦ Jonas Rockhold
- ♦ Ashley Sansing
- ♦ Jason Saxon
- ♦ Blake Scates
- ♦ Darlyn Scott
- ♦ Melissa Smith
- ♦ Jessica Sobkowiak
- ♦ Larry Southard
- ♦ Scott Stryker
- ♦ Amanda Summers
- ♦ Marianne Thomas
- ♦ David Turrubiarte
- ♦ Julie Van Horn
- ♦ April Van Rivers
- ♦ Andrea Voss
- ♦ Lisa (Cigich) Weaver
- ♦ Charles Weaver
- ♦ Erin Weekley
- ♦ Abigail Wiegman
- ♦ Jenna Williams
- ♦ Sasha Wohlpart
- ♦ Mallory Young
- ♦ Cara Zasoba

2009

- ♦ Willie Baca
- ♦ Paula Cammuso
- ♦ Laura Cannizzaro
- ♦ Rebecca Carden
- ♦ Adina Felii
- ♦ Charmaine Guerrine
- ♦ Kelley Kaminsky
- ♦ Katherine Liebl
- ♦ Nikolay Marinov
- ♦ Deborah McEwan
- ♦ Jennifer Miller
- ♦ Allison Nelson
- ♦ Kelley O'Nan
- ♦ M. Kelley Reyff
- ♦ Patricia Rice
- ♦ Jessica Rouse
- ♦ Joanne Sirois
- ♦ Grable Walls
- ♦ Kimberly Williams
- ♦ Sarah Wood



FINANCIALS

FLORIDA GULF COAST UNIVERSITY FOUNDATION, INC.

BALANCE SHEET / June 30, 2009

ASSETS

CURRENT ASSETS

Cash and cash equivalents	\$8,094,121
Interest receivable	5,659
Accounts receivable	7,055
Pledges receivable	133,700
Total current assets	8,240,535

NONCURRENT ASSETS

Investments	\$401,588
Restricted investments	39,335,257
Pledges receivable	166,200
Royalties receivable	2,309,437
Loans receivable	5,000,000
Land holdings	4,551,500
Capital assets, net	10,849
Total noncurrent assets	51,774,831
Total assets	\$60,015,366



LIABILITIES AND NET ASSETS

CURRENT LIABILITIES

Accounts payable	\$41,833
Unearned rent revenue	24,000
Gift annuities payable	6,942
Total current liabilities	72,775

NONCURRENT LIABILITIES

Loans payable	6,000,000
Unearned rent revenue	48,000
Gift annuities payable	155,089
Total noncurrent liabilities	6,203,089
Total liabilities	6,275,864

NET ASSETS

Invested in capital assets	10,849
Restricted	
▪ Restricted by donors —	
expendable	11,576,050
▪ Permanent endowments —	
nonexpendable	36,474,810
Unrestricted	5,677,793
Total net asset	53,739,502
Total liabilities and net assets	\$60,015,366

**STATEMENT OF REVENUES, EXPENSES
and CHANGES IN NET ASSETS**

For the year ended in June 30, 2009

OPERATING REVENUES

Contributions	\$4,234,719
Rental income and other	1,133,519
Total operating revenue	5,368,238

OPERATING EXPENSES

Program services	
▪ Program fees	4,096,009
▪ Scholarships	1,308,839
▪ University support	3,051,686
▪ General/administrative expenses ...	2,464,352
	10,920,886

Other expenses	
▪ Interest	166,763
▪ Depreciation	6,828
	173,591

Total operating expenses	11,094,477
Operating loss	(5,726,239)

NONOPERATING REVENUES

Interest earnings	223,389
Net depreciation in investments	(8,781,252)
Total nonoperating revenues	(8,557,863)
Income before capital additions	(14,284,102)

CAPITAL ADDITIONS

Contributions to endowments	2,249,767
Total capital additions	2,249,767
Decrease in net assets	(12,034,335)
NET ASSETS, beginning of year	65,773,837
NET ASSETS, end of year	\$53,739,502

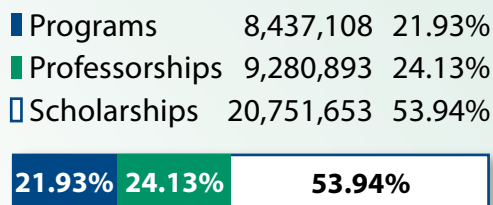
**SCHOLARSHIPS ISSUED BY THE
FOUNDATION OVER THE PAST
FIVE YEARS**



**THE ENDOWMENT OVER THE
PAST FIVE YEARS**



**BREAKDOWN OF THE
ENDOWMENT FUND**



ENDOWED FUNDS

Endowed funds are established with a minimum gift of \$10,000. Endowed funds carry on in perpetuity, generating income for scholarships or programs.

EMINENT SCHOLAR CHAIR FUNDS

- ♦ Alico Corporation Chair in Financial Management & Planning
- ♦ Alico Corporation Chair in Market Development & Analysis
- ♦ Alico Corporation Chair in Operations Management & Strategy
- ♦ Bernese B. and Sidney R. Davis Chair for Environmental Design and/or Management
- ♦ Moorings Park Chair in Managerial Accounting
- ♦ Southwest Florida Endowed Chair of Nursing
- ♦ Uncommon Friends Chair of Ethics
- ♦ Whitaker Eminent Scholar Chair in Science

PROFESSORSHIP FUNDS

- ♦ BB&T Distinguished Professorship in Free Enterprise
- ♦ The Elizabeth A. and Jack A. Conner Professorship of Nursing
- ♦ The Elizabeth A. and Jack A. Conner Professorship on World Affairs
- ♦ The Dr. Edith Potter Deats Professorship in Nursing
- ♦ The Marguerite and Guy Howard Fund for Excellence
- ♦ The W. Thomas Howard Endowed Professorship in Business

PROGRAM FUNDS

- ♦ Art Gallery
- ♦ Susan and Donald Blanchard Engineering Fund
- ♦ The Bower School of Music Fund
- ♦ The Mrs. Bunny Foundation Purchase Fund
- ♦ Center for Judaic, Holocaust, and Human Rights
- ♦ John C. Dacey Award for Endeavor Endowed Program Fund
- ♦ Daitch Family Summer Research Opportunity Fund
- ♦ Embassy Suites Fort Myers/Estero Resort & Hospitality Management Program Fund
- ♦ The Florida Institute of Certified Public Accountants, Southwest Florida Chapter Accounting Endowed Nursing Program Fund
- ♦ George and Beatrice Fisher Endowed Fund for the Southwest Florida Center for Positive Aging
- ♦ Gabor Employee Recognition Program Fund
- ♦ Honors Program Endowed Fund
- ♦ Dr. Erich Liebert World Affairs Program Endowment Fund

- ♦ Linda and David Lucas Institute for Master Planned Community Development and Finance Fund
- ♦ Lutgert Companies Fund
- ♦ Northern Trust Signature Fund
- ♦ Fingers O'Bannon Fund
- ♦ U. A. Whitaker School of Engineering Excellence in Education Award Endowed Fund
- ♦ Val Ward Family College of Business Endowed Fund
- ♦ Jaynie and Stanley Whitcomb Endowed Fund

SCHOLARSHIP FUNDS

- ♦ American Association of University Women Endowed Scholarship Fund*
- ♦ Abernathy Port Charlotte Kiwanis Foundation - In Honor of John F. Abernathy Endowed Scholarship Fund
- ♦ Advancement Trust Fund
- ♦ Alico, Inc. Scholarship Fund
- ♦ Alico, Inc. Scholarship Fund*
- ♦ Jack Amar Memorial Scholarship Endowed Fund
- ♦ Judge Isaac and Audrea Anderson Scholarship Endowed Fund
- ♦ Anonymous Scholarship Fund*
- ♦ Balfour Beatty Construction, LLC Endowed Scholarship Fund
- ♦ Bank of America Endowed Scholarship Fund
- ♦ Bank of America Florida's Community Scholars Program
- ♦ Corporal Alfredo Baños Scholarship Fund*
- ♦ William and Kathryn Beeken Scholarship Fund*
- ♦ Cynthia A. Bennett Scholarship Endowed Fund
- ♦ Jean S. Benson Scholarship Fund*
- ♦ Mrs. Keith S. Benson Scholarship Fund
- ♦ August and Elizabeth Beran Family Scholarship Fund*
- ♦ Bickel Family Scholarship Fund - In Memory of Jean M. Bickel
- ♦ Blais, Case, Catti, D'Alessandro, Lucas, and Manone Families Scholarship Endowed Fund
- ♦ Blue Cross and Blue Shield of Florida Nursing Scholarship Fund
- ♦ Bonita Springs Area Chamber of Commerce Scholarship Fund*
- ♦ Naples Town Hall Scholarship - In Honor of Barbara and Earle Borman Endowed Fund
- ♦ President Wilson G. and Jo Anna Bradshaw Scholarship Endowed Fund

- ♦ Edward John Brenner Memorial Engineering Scholarship Endowed Fund
- ♦ The Brooks Foundation Endowed Scholarship Fund
- ♦ Keith Bullock Memorial Scholarship Endowed Fund
- ♦ The Mrs. Bunny Foundation Scholarship Fund*
- ♦ Jackson Burgess Endowed Scholarship Fund
- ♦ Carol and Jim Burnett Endowed Graduate Scholarship Fund
- ♦ The Zelda Butler Memorial Scholarship Fund
- ♦ Pat and Laura Cacho Family Scholarship Endowed Fund
- ♦ Ruth M. and Cleveland L. Campbell Engineering Scholarship Fund*
- ♦ Ruth M. and Cleveland L. Campbell Engineering Scholarship Endowed Fund
- ♦ E. Odell Carlton and Golda Carlton Scholarship Fund*
- ♦ Charlotte Community Foundation, Inc. Endowed Scholarship Fund*
- ♦ Charlotte Regional Medical Center Scholarship Fund*
- ♦ Coastal Village Endowed Scholarship Fund
- ♦ Brian and Denise Cobb Endowed Scholarship Fund
- ♦ Harvey D. and Janet G. Cohen Scholarship Fund
- ♦ College Club Apartments Endowed Scholarship Fund
- ♦ Joseph "Joe" Collier Memorial Scholarship Endowed Fund
- ♦ Barron and Dana Collier Scholarship Fund
- ♦ Gregory and Angela Valvo Collins Endowed Scholarship Fund
- ♦ Colonial Bank Endowed Scholarship Fund
- ♦ Community Health Association Scholarship Fund*
- ♦ Computing Services Endowed Scholarship Fund
- ♦ Jack and Betty Conner Endowed Scholarship Fund*
- ♦ Jack and Betty Conner Fellowship Fund
- ♦ Alan and Selma Cooper Endowed Scholarship Fund - In Memory of James Francis Cooper*
- ♦ Coopers & Lybrand Endowed Scholarship Fund
- ♦ David and Karen Crowther Scholarship Endowed Fund
- ♦ Caloosahatchee Chapter of the National Society of the Daughters of the American Revolution Endowed Scholarship Fund
- ♦ Udaya N. and Ira R. Dash Scholarship Fund*
- ♦ Betty Ann Denholtz Memorial Scholarship Fund*
- ♦ Duffus Family Scholarship Endowed Fund
- ♦ Edison Garden Club - Peggy Karkalits Scholarship Endowed Fund
- ♦ Ruth L. Faith Endowed Scholarship Fund for Women in Mathematics

- ♦ The FGCU Alumni Association Scholarship Fund
- ♦ Florida Institute of Certified Public Accountants, Southwest Florida Chapter, Accounting Endowed Scholarship Fund
- ♦ Paul and Aline Flynn Scholarship Fund
- ♦ Fort Myers Women's Network Endowed Scholarship Fund*
- ♦ Jules Freeman Scholarship Endowed Fund
- ♦ Friends of East County Regional Library Scholarship Fund*
- ♦ Bruce R. Geyer Memorial Book Scholarship Fund
- ♦ Golden Apple Teacher Recognition Program™ Scholarship Fund
- ♦ Graduate Business Association Endowed Scholarship Fund
- ♦ David Graham/Urban Land Institute Scholarship Endowed Fund
- ♦ Marvin and Helene Gralnack Scholarship Endowed Fund
- ♦ Marvin and Helene Gralnack Scholarship Fund*
- ♦ Greater Fort Myers Chamber of Commerce Scholarship Fund*
- ♦ Carole Green Endowed Nursing Scholarship Fund*
- ♦ John and Dorothy Guigon Endowed Scholarship Fund*
- ♦ HSA Engineers & Scientists Endowed Fund
- ♦ Harvard Jolly Architects Endowed Scholarship Fund*
- ♦ Florence Hecht Endowed Scholarship Fund
- ♦ Heidt & Associates, Inc., Engineering Scholarship Endowed Fund
- ♦ Dr. Denise Heinemann Nursing Scholarship Fund*
- ♦ Henderson, Franklin, Starnes & Holt, P.A. Scholarship Fund - in Honor and Recognition of Retired Stockholders James A. Franklin, Jr., Albert Frierson, Stephen L. Helgemo, and Ronald W. Smalley
- ♦ Barbara and Joe Marlin Hilliard Scholarship Fund
- ♦ Joe A. and "Tippy" Hilliard Scholarship Fund
- ♦ Hillmyer-Tremont Endowed Scholarship Fund*
- ♦ Hispanic Council of Southwest Florida Endowed Scholarship Fund - In Memory of Mary Giglia Johnson*
- ♦ Ruth and Burt Holmes Endowed Scholarship Fund*
- ♦ David and Beth Howard Scholarship Fund
- ♦ W. Thomas Howard/Gannett Foundation Scholarship Fund
- ♦ Mary Frances Howard Nursing Scholarship Fund*
- ♦ Muriel K. Hudson Endowed Nursing Scholarship Fund
- ♦ William J. and Lillian S. Hudson Endowed Scholarship Fund
- ♦ Idelson Family Endowed Scholarship Fund

ENDOWED FUNDS

- ♦ India Association of Fort Myers, Inc. Scholarship Fund
- ♦ Johnson Engineering Endowed Scholarship Fund
- ♦ Melissa C. Johnson Nursing Scholarship Fund
- ♦ Dr. Melvyn J. Katzen Endowed Scholarship Fund*
- ♦ Pop and Marj Kelly Scholarship Fund
- ♦ Kelly Foundation Scholarship Fund*
- ♦ Mabel and Arnold Keys Memorial Endowed Scholarship Fund
- ♦ Kiwanis Club of Lehigh Acres Endowed Scholarship Fund*
- ♦ Kiwanis Club of Lehigh Acres Scholarship Endowed Fund
- ♦ Klein Family Scholarship Fund - In Memory of Viola Odenheimer*
- ♦ Charlie Kleman Scholarship Fund*
- ♦ James F. and Lynn E. Knupp Scholarship Endowed Fund #1
- ♦ James F. and Lynn E. Knupp Scholarship Endowed Fund #2
- ♦ John Kontinos Endowed Scholarship Fund
- ♦ The Kraft Construction Company Scholarship Fund*
- ♦ The Kraft Construction Family Scholarship Fund
- ♦ Laboda Family Endowed Scholarship Fund*
- ♦ Lambros Family Scholarship Fund*
- ♦ LarsenAllen, LLP Scholarship Fund
- ♦ Sanford Lawton, Jr. Endowed Scholarship Fund
- ♦ Silver Anniversary/Lee County Electric Cooperative Inc. Endowed Scholarship Fund
- ♦ Lee Memorial Health System Endowed Scholarship Fund
- ♦ Elaine P. and W. Bernard Lester Scholarship Fund
- ♦ Dr. Erich Liebert Endowed Scholarship Fund
- ♦ M. William and Marilyn Lightner Scholarship
- ♦ Veora and John R. Little Alumni Scholarship Endowed Fund
- ♦ Professor and Mrs. E. L. Lord Endowed Scholarship Fund - Given by Richard W. and Esther A. Shaughnessy
- ♦ Dorothea Low Endowed Scholarship Fund - In Memory of George E. Low*
- ♦ Scott Howard Malnak Memorial Scholarship Fund*
- ♦ Donald and Elizabeth Manchester Scholarship Fund
- ♦ The Elissa Manna Fund for Mechanical Engineering - In Memory of Anthony F. Manna
- ♦ Paul J. Marinelli Scholarship Fund for Excellence in Academics and Leadership
- ♦ Roger and Nancy McCabe Scholarship Fund
- ♦ Andrew McGillen Memorial Scholarship Endowed Fund
- ♦ Meftah Foundation Fund
- ♦ Meftah Scholarship Foundation Fund*
- ♦ Edward R. Melton Scholarship Fund

- ♦ William C. and Debra L. Merwin Scholarship Fund for Leadership Development
- ♦ Miromar Endowed Scholarship Fund*
- ♦ Moorings Park Foundation Scholarship Fund at FGCU
- ♦ Moseley Title Foundation Endowed Scholarship Fund
- ♦ Munters Corporation Endowed Scholarship Fund
- ♦ Naples Women in Transition Scholarship Fund*
- ♦ The Diana Nerestant Memorial Endowed Scholarship Fund
- ♦ Newman Oil Scholarship Fund
- ♦ News-Press Publishing Company Scholarship Fund
- ♦ Oakes Family Engineering Scholarship
- ♦ Occupational Therapy Advisory Council Endowed Scholarship Fund*
- ♦ Charleen Belcher Olliff Endowed Scholarship Fund
- ♦ Oswald, Trippe & Company, Inc. Endowed Scholarship Fund*



- ♦ The Thelma B. and Edwin M. Oulton Scholarship Fund
- ♦ Owen-Ames-Kimball Company Endowed Scholarship Fund
- ♦ Owen-Ames-Kimball Company Engineering Scholarship
- ♦ Jane Foster and C. B. Pate Scholarship Fund
- ♦ Periwinkle Garden Club Scholarship Fund
- ♦ The Chesley Perry Endowed Scholarship Fund/Fort Myers Campus
- ♦ Marlin R. and Alice M. Perry Scholarship Fund
- ♦ Southwest Florida Chapter, P.G.A. Endowed Scholarship Fund
- ♦ Phi Beta Kappa Association of Southwest Florida Endowed Scholarship Fund
- ♦ Physical Plant Scholarship Fund
- ♦ John E. and Aliese Price Foundation Scholarship Fund
- ♦ Elizabeth Rash Endowed Scholarship Fund
- ♦ Real Estate Investment Society Endowed Scholarship Fund*
- ♦ Red Tide Relief Endowed Fund
- ♦ SW Florida RIMS Chapter

- ♦ Scholarship Fund*
- ♦ Riverwoods Plantation Endowed Scholarship Fund*
- ♦ Kellie Jean Robinson Memorial Scholarship
- ♦ Joyce and Emory H. Rogaski Endowed Scholarship Fund*
- ♦ Joyce Rogaski Graduate Fund
- ♦ Cape Coral Rotary Foundation Endowed Scholarship Fund*
- ♦ Rotary Foundation of Fort Myers South Endowed Scholarship Fund*
- ♦ Rotary Club of Sanibel-Captiva Endowed Scholarship Fund - In Memory of William Angst*
- ♦ Marion W. Routh Memorial Scholarship Endowed Fund
- ♦ George Sanders, Jr. Endowed Scholarship Fund
- ♦ The Gene Sarazen/Professional Golf Management Scholarship Endowed Fund
- ♦ The Schoen Foundation Veteran's Scholarship Endowed Fund

- ♦ Robin and Duane Stranahan, Jr. Scholarship Fund*
- ♦ Margaret and Peter Sulick Endowed Scholarship Fund
- ♦ Taste of Collier - In Honor of Ray & June Singer Scholarship Endowed Fund
- ♦ Linda and Bob Taylor Endowed Scholarship Fund*
- ♦ Ronald L. & Teresa R. Thatcher Endowed Scholarship Fund - In Memory of Lucretia Nichols*
- ♦ Tier Electric Endowed Scholarship Fund
- ♦ Town and Gown Endowed Scholarship Fund*
- ♦ Arthur W. Tunnell, Jr. Accounting Scholarship
- ♦ United Christian Giving Scholarship Fund #1*
- ♦ United Christian Giving Scholarship Fund #2*
- ♦ United Christian Giving Scholarship Fund #3*
- ♦ United Christian Giving Scholarship Fund #4*
- ♦ US Bank, N.A. Endowed Scholarship Fund
- ♦ US Sugar Endowed Scholarship Fund
- ♦ George C. Van Rhee Scholarship Fund*
- ♦ Mary D. Van Slyke Memorial Scholarship Fund*
- ♦ Dolph and Sharon von Arx Fellowship Fund
- ♦ Dolph and Sharon von Arx Scholarship Fund
- ♦ Wachovia Foundation Scholarship Funds #1
- ♦ Wachovia Foundation Scholarship Funds #2
- ♦ Wachovia Foundation Scholarship Funds #3
- ♦ Wanderlust Scholarship Endowed Fund
- ♦ Leah Walden Endowed Nursing Scholarship Fund*
- ♦ Lori Johnson Wallace Memorial Scholarship Fund for Music Pedagogic Excellence
- ♦ Cecile Liston Wang Endowed Scholarship Fund*
- ♦ Southwest Florida Water Environment Association Scholarship Endowed Fund
- ♦ Robert A. Weiss, Jr. Memorial Scholarship Fund
- ♦ Steve and Rose Wilhelm Family Scholarship*
- ♦ Thomas and Donna Williams Scholarship Fund - In Memory of Wilma Gestefeld
- ♦ Thomas and Donna Williams Scholarship Fund - In Memory of Florence Williams
- ♦ Dr. Gerald C. Wrobel Memorial Scholarship Fund*
- ♦ Elizabeth Franklin, George & Carol Yovanovich Memorial Scholarship Endowed Fund
- ♦ Jovan Zepcevski Engineering Scholarship Endowed Fund
- ♦ Zonta Endowed Scholarship Fund
- ♦ Zonta for Women Scholarship Fund*

HONOR ROLL OF DONORS

The Honor Roll of Donors includes all donors who made contributions to the Florida Gulf Coast University Foundation, Inc. from April 1, 1993 through June 30, 2009. It is with great pleasure and gratitude that we acknowledge those who have so generously supported Florida Gulf Coast University since the Florida Gulf Coast University Foundation was established. In addition to those listed in this Honor Roll of Donors, many others have supported Florida Gulf Coast University through direct assistance to students, colleges, programs, and activities. We extend our thanks to these donors as well.

ORDER OF THE MAJESTIC EAGLE (\$5 million or more)

- ♦ Alico, Inc.
- ♦ Elizabeth A. and Jack A. Conner*
- ♦ Ginn Resorts
- ♦ Pop and Marjorie H. Kelly*
- ♦ Kitson Babcock, LLC
- ♦ Mr. and Mrs. Alan Korest
- ♦ Raymond L. and Beverly Lutgert
- ♦ Moorings Park Retirement Community
- ♦ Mr. and Mrs. Herbert J. Sugden*
- ♦ Dr. E. J. Arpin and Dr. George W. Syptert
- ♦ The Whitaker Foundation

EAGLE SOCIETY (\$1 million - \$4,999,999)

- ♦ Anonymous
- ♦ William* and Kathryn Beeken
- ♦ The Conservancy of Southwest Florida
- ♦ Mrs. Sidney (Berne) R. Davis
- ♦ Mary E. Dooner Foundation
- ♦ EMBARQ
- ♦ The Freeman Family
- ♦ Mr. and Mrs. John V. Guigon
- ♦ Mr. and Mrs. Scott Kapnick
- ♦ Peter D. & Eleanore A. Kleist Foundation
- ♦ Lee County Board of County Commissioners
- ♦ Lee Memorial Health System Foundation
- ♦ Linda and David Lucas
- ♦ Donald and Elizabeth Manchester*
- ♦ Naples Botanical Garden
- ♦ Naples Children and Education Foundation
- ♦ NCH Healthcare System
- ♦ Preferred Materials, Inc.
- ♦ SouthStar Development Partners
- ♦ Juliet C. Sproul
- ♦ Norman and Nancy Vester

EAGLE COURT (\$500,000 - \$999,999)

- ♦ Anonymous
- ♦ BB&T
- ♦ Mrs. Keith S. Benson*
- ♦ Charlotte County Board of County Commissioners
- ♦ Chico's FAS Inc.



- ♦ Collier County Board of Commissioners
- ♦ Ruth L. Faith*
- ♦ George and Rebecca Fogg
- ♦ Kay and Robert T. Gow
- ♦ Meftah Scholarship Foundation
- ♦ Pfeffer-Beach Foundation, Inc.
- ♦ The John E. and Aliese Price Foundation, Inc.
- ♦ Mr. and Mrs. Duane Swanson, Sr.
- ♦ Sharon and Dolph von Arx
- ♦ Wachovia
- ♦ WCI Communities, Inc.

UNIVERSITY CABINET (\$100,000 - \$499,999)

- ♦ Abernathy Port Charlotte Kiwanis Foundation Inc.
- ♦ Advanced Pain Management Specialists
- ♦ Ajax Building Corporation
- ♦ Christopher and Susie Allen
- ♦ Allen Concrete & Masonry, Inc.
- ♦ Anonymous
- ♦ Architecture, Inc.
- ♦ Arthrex, Inc.
- ♦ William and Joan Attridge
- ♦ Bank of America
- ♦ Charles* and Eileen Belcher
- ♦ Dr. Fay and Bedford Biles
- ♦ Blue Cross & Blue Shield of Florida
- ♦ Bernice Josephine Bongiorno*
- ♦ Bonita Bay Group
- ♦ Buehler Family Foundation
- ♦ P. H. & A. C. Buehler, Jr. Foundation
- ♦ The Mrs. Bunny Foundation

- ♦ Mabel and Arnold Keys*
- ♦ Peter D.* and Eleanore A. Kleist
- ♦ Marc* and Doris Kolber
- ♦ Kraft Construction Company, Inc.
- ♦ Mr. and Mrs. Jon Laidig
- ♦ Oscar Langford
- ♦ Lee Healthcare Resources
- ♦ Dr. and Mrs. W. Bernard Lester
- ♦ John R. and Veora M. Little
- ♦ The Lutger Companies
- ♦ In Memory of Dr. William R. Maples, Distinguish Service Professor, Department of Anthropology, University of Florida
- ♦ Gerard and Barbara Marino
- ♦ McGarvey Development Company
- ♦ Miromar Development Corporation
- ♦ The News-Press
- ♦ Northern Trust Bank
- ♦ Fingers O'Bannon Memorial Snook Tournament at Cabbage Key
- ♦ The William J. & Joyce A. O'Meara Foundation
- ♦ Oswald Trippe and Company, Inc.
- ♦ Thelma B. and Edwin M. Oulton*
- ♦ Owen-Ames-Kimball Company
- ♦ Marlin F. and Alice M. Perry*
- ♦ Sidney and Esther Rabb Charitable Foundation
- ♦ Elizabeth Rash
- ♦ Raymond Building Supply
- ♦ Joyce and Emory Rogaski*
- ♦ The Schoen Foundation
- ♦ SCM Properties, LLC
- ♦ Richard E. Sherman
- ♦ Helen E. Shick*
- ♦ Hans and Erna Siebert*
- ♦ Source Interlink Companies
- ♦ Southwest Florida Community Foundation
- ♦ C. Gilbert and Emma Spies*
- ♦ The Stans Foundation
- ♦ Stevens Industries, Inc.
- ♦ Mr. and Mrs. Duane Stranahan, Jr.
- ♦ The Stranahan Foundation
- ♦ James and Donna Sublett
- ♦ Peter and Margaret Sulick
- ♦ SunTrust Bank, Southwest Florida
- ♦ Tabiran Corporation
- ♦ Robert M. and Linda K. Taylor
- ♦ THA Foundation
- ♦ Tier Electric, Inc.
- ♦ Mary B. Ullman*
- ♦ Uncommon Friends Foundation
- ♦ University Housing Services, Inc.
- ♦ David and Cecile Wang
- ♦ Mr. and Mrs. James S. White
- ♦ Jovan A. Zepceviski
- ♦ Zep Construction, Inc.

HONOR ROLL OF DONORS

UNIVERSITY COUNCIL (\$25,000 - \$99,999)

- ◆ 131 Group, Incorporated
- ◆ Agnoli, Barber & Brundage, Inc.
- ◆ Allen Systems Group, Inc.
- ◆ ALLETE Properties
- ◆ American Express
- ◆ American Honda Foundation
- ◆ Judge* and Mrs. Isaac Anderson, Jr.
- ◆ Anonymous
- ◆ The Antigua Group
- ◆ Architectural Network, Inc.
- ◆ Balfour Beatty Construction
- ◆ Gary and Ilene Bickel
- ◆ Mr. and Mrs. Jack Blais
- ◆ Jeffrey R. Bristol
- ◆ Bonita Daily News
- ◆ Wilson and Jo Anna Bradshaw
- ◆ The Brooks Foundation
- ◆ Brown & Root Building Company
- ◆ Clyde Butcher
- ◆ Mr. and Mrs.* Cornelius P. Cacho
- ◆ The Calvin & Flavia Oak Foundation, Inc.
- ◆ Cape Coral Rotary Foundation, Inc.
- ◆ James P. and Patricia A. Carroll
- ◆ Tom and Lynda Case
- ◆ Mr. and Mrs. Joseph Catti
- ◆ Charlotte Regional Medical Center
- ◆ Lillian and Clay Clukies*
- ◆ CobbCorp, LLC
- ◆ Collier County Micro-Loan Enterprise/Banking Partnership
- ◆ Community Health Association, Inc.
- ◆ Mr. and Mrs. William G. Crone
- ◆ Crowther Roofing & Sheet Metal of Florida, Inc.
- ◆ Frank D'Alessandro*
- ◆ Udaya* and Ira Dash
- ◆ Jeffrey D. Davis
- ◆ Dr. Edith Potter Deats*
- ◆ Eugene C. Dooner
- ◆ David Dworak
- ◆ Damon Dworak
- ◆ Mr.* and Mrs. James H. Eakes
- ◆ Ecological Research & Action Foundation, Inc.
- ◆ Mr. and Mrs. Charles B. Edwards
- ◆ Estero Commons LLC
- ◆ The Explorers Club of Southwest Florida
- ◆ Farr, Farr, Emerich, Sifrit, Hackett and Carr, P.A.
- ◆ Fawcett Memorial Hospital
- ◆ Dr. and Mrs. John B. Fenning
- ◆ Fernandez Family Foundation, Inc.
- ◆ Fifth Third Bank
- ◆ First Financial Employee Leasing, Inc.
- ◆ First National Bank of Florida
- ◆ Five County Insurance Agency, Inc.
- ◆ Florida Board of Governors Foundation, Inc.
- ◆ Florida Community Bank
- ◆ Florida Institute of Certified Public Accountants, Southwest Florida Chapter
- ◆ Florida Service Painting, Inc.
- ◆ Fort Myers Toyota
- ◆ Fort Myers Women's Network
- ◆ Rene Garner
- ◆ GRAEF

- ◆ Grandezza
- ◆ Grant, Fridkin, Pearson, Athan & Crown, P.A.
- ◆ Gravina, Smith & Matte Marketing and Public Relations
- ◆ The Greater Cedar Rapids Community Foundation
- ◆ Greater Fort Myers Chamber of Commerce, Inc.
- ◆ Gulf Coast Materials of SW Florida
- ◆ Marshall W. and Lori Hanno
- ◆ Hanno Family Foundation, Inc.
- ◆ Harvard Jolly Architects
- ◆ Parker and Denise Heinemann
- ◆ Henderson, Franklin, Starnes & Holt, P.A.
- ◆ Herbal Science, LLC
- ◆ Arthur Herman
- ◆ Marguerite and Guy Howard*
- ◆ John and Darlene Huether
- ◆ Mary Hull
- ◆ The Humane Society of the United States
- ◆ Hyatt Regency Coconut Point Resort & Spa
- ◆ Mr. and Mrs. Charles K. Idelson
- ◆ Industrial Distribution Services
- ◆ Investors Security Trust Co.
- ◆ Johnson Controls, Inc.
- ◆ The Johnson Family Foundation
- ◆ Johnson-Prewitt & Assoc. Inc.
- ◆ Ann Jacobson Fund
- ◆ H. Johnston Family Foundation
- ◆ Dr. and Mrs. H. Q. Jones, Jr.
- ◆ Dr. and Mrs. Melvyn J. Katzen
- ◆ Cathryn C. Keller*
- ◆ Keylime Bistro
- ◆ Kiwanis Club of Lehigh Acres Foundation, Inc.
- ◆ Dr. David and Mrs. Stephanie Klein
- ◆ The Gerald Knox Fund
- ◆ James F. and Lynn E. Knupp
- ◆ LabCorp
- ◆ Dr. and Mrs. Gerald Laboda
- ◆ Mr. and Mrs. Alex S. Lambros
- ◆ LCEC
- ◆ Lee County Industrial Development Authority
- ◆ Lee County Medical Society Alliance
- ◆ Lee County Sheriff's Office
- ◆ Dorothea D. Low*
- ◆ Mr. and Mrs. Vito Manone
- ◆ Marsh USA, Inc.
- ◆ The James Harper Marshall Foundation, Inc.
- ◆ The Martin Foundation, Inc.
- ◆ Jerry and Betty Mason
- ◆ The Maxpoffell Foundation
- ◆ Pamela Noland
- ◆ Roger and Nancy McCabe Foundation
- ◆ Thomas and Carol McCann
- ◆ McDonald's Restaurant's/Adams & O'Reilly, Inc.
- ◆ Dr. and Mrs. Steve McIntosh
- ◆ Roy and Beverly McTarnaghan
- ◆ The Mediterra Foundation Fund
- ◆ Dr. William C. Merwin
- ◆ Miromar Development, Inc.
- ◆ Miromar Lakes Golf Club
- ◆ Miromar Outlet West, LLC
- ◆ Montrose Auto Group
- ◆ Naples Daily News

- ◆ Naples Dawgs, Inc.
- ◆ Naples Diagnostic Imaging Center, Ltd
- ◆ Naples-Fort Myers Greyhound Track
- ◆ Naples Grande Resort & Club
- ◆ Naples Women in Transition
- ◆ Naples Yacht Club Chapter, Int'l Order of the Blue Gavel
- ◆ Helen E. Nestor*
- ◆ Office Furniture & Design Center, Inc.
- ◆ Orion Bank
- ◆ PPG Industries, Inc.
- ◆ Palmira Golf Club
- ◆ Pavese Law Firm
- ◆ Peace River Regional Physicians Regional Healthcare System
- ◆ Premier Properties of SW Florida
- ◆ Regal Electric, Inc.
- ◆ Regions Bank
- ◆ The Ritz-Carlton, Naples
- ◆ Riverwoods Plantation Condominium Association
- ◆ Rotary Club of Sanibel-Captiva
- ◆ Donald Routh
- ◆ Sanibel Captiva Trust Company
- ◆ Sanibel Harbour Resort & Spa
- ◆ Gene and Mary Sarazen Foundation
- ◆ Richard W. and Esther A. Shaughnessy*
- ◆ Schenkel Schultz Architects
- ◆ Charlotte R. Schmidlapp Fund
- ◆ Donna and John Schubert
- ◆ Larry and Connie Schuster
- ◆ Schwab Ready Mix, Inc.
- ◆ The Scottsdale Company
- ◆ Seminole Casino Immokalee
- ◆ Robert W. Shrader
- ◆ Signature Communities
- ◆ Skanska USA Building, Inc.
- ◆ George M. and Mabel H. Slocum Foundation from the Joan K. Slocum Foundation
- ◆ Joan and William Slocum
- ◆ Donald and Angela Smith
- ◆ Kevin W. Smith
- ◆ Southwest Florida Chapter PGA
- ◆ Southwest Florida Regional Medical Center
- ◆ Dr. Susan E. Stans and Mr. Steven H. Stans*
- ◆ Steinway Piano Society - Greg and Sara Billings
- ◆ Stock Development
- ◆ Alex and Patience Stom*
- ◆ Susan G. Komen for the Cure Southwest Florida
- ◆ Sussex Semiconductor, Inc.
- ◆ SW Florida Chapter of RIMS
- ◆ Tartan Consulting
- ◆ Ronald L. and Teresa R. Thatcher - In Memory of Lucretia Nichols
- ◆ TKW Consulting Engineers, Inc.
- ◆ Town and Gown
- ◆ United Christian Giving
- ◆ United Way of Lee County, Inc.
- ◆ Val Ward Cadillac
- ◆ George C. Van Rhee*
- ◆ Marion and Glen* Van Slyke
- ◆ Vic's Painting, Inc.

- ◆ Mr. and Mrs. Robert W. Walden*
- ◆ Wasmer, Schroeder & Company, Inc.
- ◆ Waste Management
- ◆ Waterman Broadcasting
- ◆ Wayne Wiles Floorcoverings
- ◆ West Bay Country Club
- ◆ Jaynie and Stanley Whitcomb
- ◆ Donna G. and Thomas E. Williams
- ◆ WilsonMiller
- ◆ Alan L. and Kathryn L. Wisne
- ◆ Harvey Youngquist
- ◆ Zonta Club of Fort Myers Area

UNIVERSITY CLUB (\$10,000 - \$24,999)

- ◆ Mr. and Mrs. Richard C. Ackert
- ◆ Patsy Allen
- ◆ Barbara Amar
- ◆ Denise Rizzo Ambrefe
- ◆ Anonymous
- ◆ Armstrong World Industries, Inc.
- ◆ Associates in Cosmetic Surgery
- ◆ B & I Contractors, Inc.
- ◆ Richard H. Ballo - In Memory of Melissa C. Johnson
- ◆ Bank of Florida
- ◆ Barraco and Associates
- ◆ Barron Collier Jr. Foundation
- ◆ Bay Colony
- ◆ Bay Colony Golf Club
- ◆ Beef O'Brady's
- ◆ Ben Hill Griffin, Inc.
- ◆ Cynthia A. Bennett
- ◆ Susan R. and Richard H. Benson
- ◆ Bireley Family Foundation
- ◆ Florence L. Black*
- ◆ Susan and Don Blanchard
- ◆ Blue Results
- ◆ BMW
- ◆ Bonita Springs Area Chamber of Commerce
- ◆ Mary L. Bonnette, Ph.D., R.N.
- ◆ Bristol-Myers Squibb Foundation
- ◆ Britto Central
- ◆ Broadway Palm Dinner Theatre
- ◆ Roger and Dian Brownell
- ◆ Dr.* and Mrs. Frank M. Bryan
- ◆ BSSW Architects
- ◆ OJ Buigas
- ◆ Bundschu Kraft, Inc.
- ◆ Dr. and Mrs. H. J. Burnette
- ◆ BVK Advertising
- ◆ Cape Coral Caloosa Chapter ABWA
- ◆ Cape Coral Hospital Auxiliary, Inc.
- ◆ Carlton Fields Attorneys at Law
- ◆ Carroll Property Investments, Inc.
- ◆ Judith and Jack Cassidy
- ◆ Dr. and Mrs. Ronald D. Castellanos
- ◆ Rod Chesnutt
- ◆ Coastal Beverage, Ltd.
- ◆ Coastal Village, LLC
- ◆ Harvey and Janet Cohen
- ◆ Jean and Donald B. Cohen
- ◆ College of Life Foundation, Inc.
- ◆ Collier County Hotel & Lodging Association
- ◆ Collier Enterprises
- ◆ Collier Sports Medicine and Orthopaedic Center, PA.

* Deceased

HONOR ROLL OF DONORS

- ◆ Gregory and Angela Valvo Collins
- ◆ Commercial Air Management, Inc.
- ◆ Congress Jewelers
- ◆ Alan and Selma Cooper
- ◆ Paul and Charlotte Corrdry
- ◆ James* and Eileen Courtney
- ◆ Dr. and Mrs. Gene Cox
- ◆ The Board of Trustees of the Cox Trust
- ◆ John and Mary* Crowley
- ◆ David and Karen Crowther
- ◆ The Culinary and Hospitality Education Foundation of SWFL
- ◆ Dr. and Mrs. Amal K. Das
- ◆ Daughters of the American Revolution-Caloosahatche Chapter
- ◆ Davidson Engineering, Inc.
- ◆ Marian E. Davis*
- ◆ Dolly and Hank* Diers
- ◆ Doubletree Guest Suites
- ◆ The Duffus Family
- ◆ Mr. and Mrs. W. Harry Durling
- ◆ Economic Development Council of Collier County
- ◆ Edison Garden Club
- ◆ Frieda* and Heard Edwards
- ◆ Estuary Conservation Association
- ◆ Susan C. Evans
- ◆ Everglades A H E C, Inc.
- ◆ Eye Centers of Florida
- ◆ Fiddler's Creek Foundation, Inc
- ◆ Patrick E. Field
- ◆ Fifth Avenue Advisors, LLC
- ◆ Howard and Kathy Finch
- ◆ FineMark National Bank & Trust
- ◆ First National Bank of Naples
- ◆ Lina C. Fisher
- ◆ Richard Flanders
- ◆ Florida Engineering Society, Calusa Chapter
- ◆ Florida Real Estate Consultants
- ◆ Follett Higher Education Group
- ◆ Fort Myers Eagles, SW FL Youth Baseball Club, Inc.
- ◆ William E. and Dorothy Fritz
- ◆ The Gabor Agency, Inc.
- ◆ Gannett Foundation, Inc.
- ◆ Valerie Boyd Gargiulo
- ◆ D. Garrett Construction, Inc.
- ◆ Garthwaite Family Foundation
- ◆ Mrs. Laverne N. Gaynor
- ◆ GE Client Business Services
- ◆ General Mills Foundation
- ◆ Goodlette, Coleman & Johnson, P.A.
- ◆ Congressman and Mrs. Porter J. Goss
- ◆ Graduate Business Association
- ◆ Peg and Scott Gray-Vickrey
- ◆ Carole Green
- ◆ Drs. Patrick and Marci Greene
- ◆ Greenscapes
- ◆ Grey Oaks Country Club, LTD
- ◆ Dr. Ben H. Griffin, III
- ◆ Gulfcoast South AHEC
- ◆ Gulf Coast Pet Partners, Inc.
- ◆ Don J. and Mosey Gunther
- ◆ Gloria Wright Gutwirth
- ◆ Haffenreffer Family Fund
- ◆ Hamleg Enterprises, LLC
- ◆ Mr. and Mrs. Homer J. Hand
- ◆ Harbourside Custom Homes, Inc.
- ◆ Harley-Davidson of Fort Myers
- ◆ William L. Hayden*
- ◆ Health Management Associates, Inc.
- ◆ Heidt & Associates, Inc.
- ◆ The Donna Price Henry Family
- ◆ Morris Herstein
- ◆ Hispanic Council of Southwest Florida
- ◆ Hope Hospice
- ◆ Mr. and Mrs. William N. Horowitz
- ◆ Houchin Constuction Inc.
- ◆ HSA Engineers & Scientists
- ◆ Julian L. Hudson*
- ◆ Lillian S. Hudson*/Christina Muratore and Jordan and Erin Hudson
- ◆ IAG Galleries
- ◆ India Association of Fort Myers
- ◆ Jan and Peter Jacobsen
- ◆ Jason's Deli
- ◆ Jewish Federation of Collier County
- ◆ Dr. and Mrs. John C. Kagan
- ◆ Dr. and Mrs. George C. Kalemeris
- ◆ Richard L. Kelly
- ◆ Maurice D. Kent
- ◆ K. J. King Family Limited Partnership
- ◆ Klaas Capital Group
- ◆ Dick and Nancy Klaas
- ◆ Charles G. Koch Charitable Foundation
- ◆ Landmark Development Group
- ◆ Landon Development Group, LLC
- ◆ LaPlaya Beach & Golf Resort
- ◆ Stephen and Nicole LaQuis
- ◆ LarsonAllen, LLP
- ◆ Rodney and Wendy Law
- ◆ Lee County Mosquito Control District
- ◆ Lely Development
- ◆ Maureen and Arnold Lerner
- ◆ Gary Levenson
- ◆ James W. Lewis
- ◆ Bill* and Marilyn Lightner
- ◆ Mr. and Mrs. Clyde A. Locker
- ◆ Dr. and Mrs. Allen B. Malnak
- ◆ Elissa D. Manna
- ◆ Marco Beach Ocean Resort
- ◆ L. Gail Markham
- ◆ Marco Island Marriott Resort & Golf Club
- ◆ Duncan McBride
- ◆ Mr. and Mrs. James McFadden
- ◆ The Honorable Gwendolyn F. McLin
- ◆ Dr. and Mrs. Michael Meftah
- ◆ Miles Media Group
- ◆ Dr. and Mrs. Charles J. Montgomery
- ◆ Valery and Mechlin Moore
- ◆ Robert and Linda Morris
- ◆ Kenneth Mortenson
- ◆ Mr. and Mrs. Edward A. Morton
- ◆ The Naples Beach Hotel & Golf Club
- ◆ Naples Day Surgery North
- ◆ NeoGenomics Laboratories
- ◆ James D. and Eleanor F. Newton*
- ◆ Oakes Family
- ◆ Carole L. Olling
- ◆ OMG Americas, Inc.
- ◆ J. Foster Pate
- ◆ Dr. Richard C. Peggnetter
- ◆ The William Penn Foundation
- ◆ Mr. and Mrs. F. Fred Pezeshkan
- ◆ PoelkerTransportation Services, Inc.
- ◆ John and Jinjer Pollock
- ◆ Frank and Linda Potestio
- ◆ Steven W. and Kathleen R. Powley
- ◆ Prager, Sealy & Co., LLC
- ◆ Premier Insurance Corporation
- ◆ Press Printing Company
- ◆ Publix Super Markets Charities
- ◆ Paul H. Pusey Foundation
- ◆ Charles* and Terri Ray
- ◆ RCP Services, LLC
- ◆ Real Estate Investment Society
- ◆ Dr. James and Joann Rehak
- ◆ Frances V. Riley*
- ◆ George F. Riley
- ◆ Mr. and Mrs. Ronald J. Riley
- ◆ Dr. and Mrs. Thomas J. Roberts
- ◆ Drs. Hudson and Elsa Rogers
- ◆ Ronald McDonald House Charities of Southwest Florida
- ◆ Rosalynn Carter Institute for Caregiving
- ◆ Gayle G. Rosemann and Paul McElwee
- ◆ Rotary Club of Fort Myers South - Trippe Scholarship
- ◆ Rotary Foundation of Fort Myers South
- ◆ Thomas S. Roy, Jr.
- ◆ The Saint Paul Foundation
- ◆ Mr. and Mrs. George F. Sanders*
- ◆ John and Joan Scanlon
- ◆ James W. Scatterday
- ◆ Peter Schmieler
- ◆ Pam and Bill Schreiber
- ◆ Richard and Maureen Schulze
- ◆ Jerry and Donna Schwab
- ◆ Scripps Howard Foundation
- ◆ Securian Foundation
- ◆ Seminole Tribe of Florida
- ◆ Ruth M. Service - In Memory of Bill Service
- ◆ Frances B. Setterblade*
- ◆ Shelton Jaguar/Porsche/Range Rover
- ◆ Shelving and More
- ◆ William F. Sibley Foundation
- ◆ Jean M. and C. Mickey Skinner
- ◆ Wilbur C. Smith
- ◆ Grace J. Sneckenberger*
- ◆ Southern Audio Visual, Inc.
- ◆ Southwest Florida Eagles
- ◆ SW Florida Professional Golfers Association
- ◆ Southwest Florida Water Environment Association
- ◆ Southwest Florida Workforce Development Board, Inc.
- ◆ Stark Community Foundation
- ◆ Adria and Jerry Starkey
- ◆ Edward V. Staros
- ◆ State Farm Insurance
- ◆ State Farm Mutual Automobile Insurance Company
- ◆ Mr. and Mrs. Douglas R. St. Cerny
- ◆ Glenn D. and Barbara Steil
- ◆ Saul I. Stern
- ◆ STH Architectural Group, Inc.
- ◆ Stiles Landscape Company
- ◆ Suncoast Schools Federal Credit Union's Suncoast for Kids Foundation
- ◆ Suncoast Moving & Storage, Inc.
- ◆ Suncoast Schools Federal Credit Union
- ◆ Sunshine Ace Hardware
- ◆ Sunstream Hotels and Resorts
- ◆ Dr. Jean Swangren
- ◆ Sysco Food Services
- ◆ Taishoff Family Foundation
- ◆ Tampa Bay Trane
- ◆ Ted Todd Insurance Agency, Inc.
- ◆ Ms. Pamela Templeton
- ◆ TIAA-CREF
- ◆ Tom Perry Family Foundation
- ◆ The Travel Team, Inc.
- ◆ Truly Nolen
- ◆ Tween Waters Inn
- ◆ UBS Financial Services, Inc.
- ◆ United Mechanical, Inc.
- ◆ United States Sugar Corporation
- ◆ US Bank
- ◆ The Vineyards Development Corporation
- ◆ Michael Walker
- ◆ The Walker Contracting Group, Inc.
- ◆ The George R. Wallace Foundation
- ◆ John and Maggie Warfield
- ◆ Jason and Cara Webster
- ◆ Enid Weis
- ◆ WHM, LLC
- ◆ Bob Wigley and Ann Moran
- ◆ Woodyard & Associates, LLC
- ◆ Wright Construction Corp.
- ◆ Michele and Rich Yovanovich
- ◆ Yovanovich Family Charitable Trust

GOLD CIRCLE (\$5,000 - \$9,999)

- ◆ Dr. B. G. Adhinarayanan and Mrs. Meera B. Adhinarayanan
- ◆ Dr. Randall S. Alberte
- ◆ Alico Self Storage, LLC
- ◆ Allstate Bioguard Services Inc.
- ◆ Alvarez Site Development
- ◆ American Association of University Women of Lee County
- ◆ American Residential Prop LLC
- ◆ Anixer, Inc.
- ◆ George Ankeny
- ◆ Anonymous
- ◆ Albert and Ana Arazoza
- ◆ Donald W. Ashley
- ◆ Atlantic States Bank
- ◆ ATP Engineering South, PL
- ◆ Lillian Austin*
- ◆ B & W Golf Cars
- ◆ Linda S. Bacheler
- ◆ Mr. and Mrs. Gray C. Ballman
- ◆ Pat and William Barton
- ◆ Robert J. Batson
- ◆ Mr. & Mrs. Garfield R. Beckstead
- ◆ Cecil C. Beehler
- ◆ Evelyn S. Belleman
- ◆ Betty MacLean Travel, Inc.
- ◆ BNL Construction, Inc.
- ◆ Bob and Linda Taylor Foundation
- ◆ Leo Boisvert
- ◆ Bonita Bay Trianon
- ◆ Bonita Boat Center, Inc.
- ◆ Boran Craig Barber Engel Construction Co., Inc.
- ◆ Dr. and Mrs. James D. Borden
- ◆ Bridgetree
- ◆ Brooks & Freund, LLC
- ◆ Drs. Jon and Alice Brunner

HONOR ROLL OF DONORS

- ♦ Curtis D. Bullock
- ♦ Reg and Sandra Buxton
- ♦ Byck-Rothschild Foundation, Inc.
- ♦ Lawrence and Margaret Byrnes
- ♦ Calusa Pines Golf Club
- ♦ The Carrington Family
- ♦ Carnes Capital Corporation
- ♦ Blake A. Carroll - In Memory of
Lexton H. Carroll
- ♦ Patsy Carter
- ♦ Cavanaugh Capital Management
- ♦ Century 21 Sunbelt
- ♦ Cleat, LLC
- ♦ Joseph E. Clouse, Inc.
- ♦ Cocoloba Chapter Florida Native
Plant Society, Inc.
- ♦ Coleman, Hazzard & Taylor, PA
- ♦ College Club Apartments
- ♦ Philip and Robin Collier
- ♦ Collier Building Industry
Association, Inc.
- ♦ Collier County Audubon Society
- ♦ Collier County Produce, Inc.
- ♦ Comcast Financial Agency
Corporation
- ♦ Compass Construction, Inc.
- ♦ Connection Point, Inc.
- ♦ Donald C. and Linda Cook
- ♦ Creative Events and Rentals/
Taylor Rental
- ♦ Crowne Plaza Hotel
- ♦ CRS Technology
- ♦ Cummings & Lockwood
- ♦ Dr. Kathleen B. Davey
- ♦ Representative Mike Davis*
- ♦ Richard A. Davis
- ♦ Robert S. Dean
- ♦ David Deiros
- ♦ Tony & Carol DeLuccia
- ♦ DiamondHead Beach Resort
- ♦ Ronald J. and Arlene Diorio
- ♦ Barbara B. Dobbs
- ♦ William Doyle
- ♦ Dr. Lee and Cassandra Duffus
- ♦ Dufrane Jewelers
- ♦ Derek Dunn-Rankin
- ♦ Priscilla Dworak in memory of
Dennis Dworak
- ♦ Dr. Allan Dyen-Shapiro
- ♦ The Edgewater Beach Hotel
- ♦ Enterprise Rent-A-Car
- ♦ Vance and Brenda Ericson
- ♦ Estero Gulf Coast Kiwanis Club
- ♦ Executive Adventures
- ♦ Fewster Enterprises, LLC
- ♦ First Community Bank of
Southwest Florida
- ♦ FlexInternational Software, Inc.
- ♦ Florida Career Centers
- ♦ Florida Foundation for Future
Scientists
- ♦ Florida Gynecologic Oncology/
21st Century Oncology
- ♦ Forestry Resources, Inc
- ♦ Joan and John Forkin
- ♦ Fort Myers Christian School
- ♦ George and Barbara Franks
- ♦ Mr. and Mrs. Jeffrey D. Fridkin
- ♦ Frost and Associates, Inc.
- ♦ Woodring M. Fryer
- ♦ Frank H. Galeana, Jr.

- ♦ Gary P. Galleberg
- ♦ William J. Gallion Family
Foundation Inc.
- ♦ The George R. Gardner
Foundation, Inc.
- ♦ Donald Garrett
- ♦ Gates Builders, Inc.
- ♦ Germain Toyota Scion
- ♦ GFA International, Inc.
- ♦ Global & Americas
- ♦ Global Impact
- ♦ Golf & Electric Vehicles, Inc.
- ♦ Gorovoy M.D. Eye Specialists
- ♦ Carolyn M. Gray
- ♦ Great Dock Canoe Race, Inc
- ♦ Phyllis Greenberg
- ♦ Guest Services, Inc.
- ♦ Asha and Hem Gupta
- ♦ Ann H. Hamilton
- ♦ Hamilton Resources Co.

- ♦ Merrill Kuller
- ♦ LaBelle Grove Management
- ♦ June LaCombe
- ♦ Laird Youth Leadership
Foundation, Inc.
- ♦ Bradley Landahl
- ♦ Marc and Lise Laviolette
- ♦ Lehigh Acres Jaycee's
Foundation, Inc.
- ♦ Linda and Kirk Lehtomaa
- ♦ Lifestyles Chiropractic
- ♦ George A. Llano
- ♦ London Bay Homes
- ♦ Management Communications
Consultants
- ♦ Marriott International
- ♦ Ikki and Polly Matsumoto
- ♦ Carl and Barb McAloose
- ♦ McBLT Ventures, Inc.
- ♦ David and Tammy McQuade

- ♦ Michele and Thomas Pessin
- ♦ Mary I. Peterson*
- ♦ The John J. Petracco Family
- ♦ Julie and Garrett Peyton
- ♦ Larry and Susanne Pickering
- ♦ PNC Bank, FSB
- ♦ Dave and Arlene Powell
- ♦ Brian and Mary Presley
- ♦ Private Capital Management
- ♦ The Prudential Foundation
- ♦ The Recursionist Fund, Inc.
- ♦ Mr. and Mrs. Gunther Reese
- ♦ Regal Entertainment Group
- ♦ Dennis and Cindy Reilley
- ♦ Reynolds, Smith & Hills, Inc.
- ♦ Suzanne Richter
- ♦ Risch Family Foundation
- ♦ Bruce A. Robb
- ♦ Chandler S. Robbins
- ♦ Loren L. and Kimberly A. Roberts
- ♦ Darren Robertshaw
- ♦ Robins, Kaplan, Miller & Ciresi, L.L.P.
- ♦ Roetzal & Address
- ♦ Jack and Sue Rogers
- ♦ Herbert and Ann Rowe
- ♦ The Rusty Staub Foundation
- ♦ Saint Luke's Church
- ♦ Joan and Michael B. Salke
- ♦ Jerry Schmoyer
- ♦ Dean E. Schreiner
- ♦ Michael J. Schroeder & Andrea L.
Schroeder
- ♦ Severn Trent Services - Moyer
- ♦ Patrick Shean
- ♦ Mr. and Mrs. Karl S. Sheffield
- ♦ The Shell Factory
- ♦ Dr. Joseph and Marcela Shepard
- ♦ Dr. and Mrs. Peter M. Sidell
- ♦ Signs & Things
- ♦ SimplexGrinnell
- ♦ Carol Slade
- ♦ Bruce T. Smith
- ♦ A. James and M. Kathryn Smith
- ♦ Mrs. Mary W. Smith
- ♦ Randy Smith
- ♦ Ted Sottong
- ♦ Source, Inc. Engineers-Planners
- ♦ Southeastern Association of State
Highway & Transportation Officials
- ♦ South Seas Resorts Co.
- ♦ Southwest Regional Rehabilitation
Center
- ♦ Spectator's/Champs
- ♦ Richard W. Steves*
- ♦ Kenneth and Halcyon St. Hill
- ♦ Stoneybrook Community
Development District
- ♦ Surety Construction Company
- ♦ Taste of Collier
- ♦ Thalheimers
- ♦ Nola Theiss
- ♦ Thompson Mitsubishi
- ♦ Tilden, Lobnitz & Cooper
- ♦ S. Gregory Tolley and Rebecca Totaro
- ♦ Louise Torri
- ♦ Margaret O. Tunnell
- ♦ Arthur W. Tunnell III
- ♦ United Way of Charlotte County, Inc.
- ♦ University Sports
Publications Co., Inc.
- ♦ Passarella and Associates, Inc.
- ♦ Urban Land Institute
- ♦ Useppa Inn & Dock Company, Ltd.
- ♦ Mary E. Van Arsdale



- ♦ Herbert Handelsman
- ♦ Larry and Mary Hart
- ♦ Health Education Center
of SW. Florida
- ♦ Health Management Association
- ♦ H. J. Heinz Company Foundation
- ♦ The Hertz Corporation
- ♦ Holiday Inn Select
- ♦ Earl P. and Majorie L. Holland
- ♦ Laura A. Holquist
- ♦ Homewood Suites Hotel
- ♦ Dr. and Mrs. Francis L. Howington
- ♦ Huntington National Bank-
Private Financial Group
- ♦ Donne Hutcheson
- ♦ Iguana Mia
- ♦ Institute of Financial Education
- ♦ IronStone Bank
- ♦ Norman E. and Caroline P. Jackson
Philanthropic Fund
- ♦ Elsa Jensen
- ♦ JFK Family Limited Partnership
- ♦ Dr. Louise Malia Johnson
- ♦ Paul Jones, MD
- ♦ James H. and Margaret A. Keller
- ♦ Nancy M. Kelso
- ♦ Kenneth Kirsner
- ♦ Barbara Krell
- ♦ Kingsley Realty, Inc.

- ♦ J. William and Barbara H. Meek
- ♦ Edward M. Meer
- ♦ Charles Mesloh and Jennifer
James-Mesloh
- ♦ MHS Organizational Development
- ♦ Kathleen F. Miller, Ed.D.
- ♦ Mona Lisa
- ♦ Murdock Family Medicine, P.A.
- ♦ My Sports Dreams
- ♦ Naples Area Hotel/Motel
Association, Inc.
- ♦ Naples Woman's Club
- ♦ Salvatore Nardello
- ♦ James and Karen Nathan
- ♦ John and Mary-Gail Naylor
- ♦ Mary E. Nevins
- ♦ Mr. and Mrs. William E. Newman
- ♦ Nichols & Associates
- ♦ William F. Noll, III
- ♦ Nurse Practitioner Council of
Collier County
- ♦ OCI Associates Consulting
Engineers
- ♦ Dave and Judy Osterholt
- ♦ Paradise Advertising & Marketing
- ♦ Dr. Robert and Mrs. Joan Pascotto
- ♦ Passarella and Associates, Inc.
- ♦ Dennis Passini
- ♦ Butch and Dorothy Perchan

* Deceased

HONOR ROLL OF DONORS

- ♦ David Vazquez
- ♦ Donna Vazquez
- ♦ Walbridge Aldinger Company
- ♦ Warner M. Washburn
- ♦ Dr. P.A. Washington
- ♦ Lee Weeks
- ♦ Suzanne Weinheimer
- ♦ Allen and Marla Weiss
- ♦ Ludmilla Gricenko Wells
- ♦ Ron White
- ♦ Steven R. and Melissa P. Whitley
- ♦ George J. Wilder
- ♦ William R. Hough & Co.
- ♦ Scott Willis
- ♦ Wollman, Gehrke & Solomon, PA
- ♦ Woodward, Pires & Lombardo, PA.
- ♦ Phillip and Carole Woods
- ♦ Mr. and Mrs. Rodney I. Woods
- ♦ Dr. Bonnie L. Yegidis
- ♦ Roy Young
- ♦ Young Authors Conference

- ♦ Peter Anderson
- ♦ Mr. and Mrs. Richard C. Anderson
- ♦ Robert H. Anderson
- ♦ James R. Andre
- ♦ Christine and Paul Andrews
- ♦ Mr. and Mrs. Larry Andrews
- ♦ Angel Care America
- ♦ Anning-Johnson Company
- ♦ Anonymous
- ♦ Aon Foundation
- ♦ Peggy Apgar' Schmidt
- ♦ Bluma Appel
- ♦ Aqua-Matic
- ♦ Rudolph F. and Lauren J. Aragon
- ♦ ARCO Foundation
- ♦ Aristocrat Golf Company, Inc.
- ♦ Armand and Beverly Ball Family Foundation
- ♦ Tyler Armstrong
- ♦ Carmen Arteaga
- ♦ Kenneth A. Aschom

- ♦ Dr. and Mrs. Carey N. Barry
- ♦ Brad N. Bartel
- ♦ Basil Street Partners, LLC
- ♦ Debra Bauman
- ♦ Jerry and Sue Beaver
- ♦ Mort Beck
- ♦ Norman and Nancy Beecher
- ♦ The Hector E. Beeken Family
- ♦ Steven and Jean Belcher
- ♦ Arnold Bell
- ♦ Karen Bell
- ♦ Bentley Electric Company, Inc.
- ♦ Dr. and Mrs. Harold Berris
- ♦ Best Buy
- ♦ Tom and Sandy Betts
- ♦ Philip and Mary Beuth
- ♦ Dr. Sharon Irish Bevins
- ♦ Thomas Bevins
- ♦ Cindy M. and Sam F. Bianchi
- ♦ Alan and Leslie Bielen
- ♦ Robert W. Biggs

- ♦ H. Lien Bragg
- ♦ Mr. and Mrs. Edward Bransilver
- ♦ Steven Brettholtz
- ♦ Sherie L. Brezina
- ♦ BrickTop's
- ♦ Kathy Bridge-Liles
- ♦ Brighton Hotel, LLC
- ♦ Norma Bristol
- ♦ Dick Broadus
- ♦ Brodeur Custom Clothiers
- ♦ Bronzart Foundry, Inc.
- ♦ Mr. and Mrs. Stephen Brooks
- ♦ Brookside Holdings, LLC
- ♦ Brown & Brown Insurance
- ♦ Mr. and Mrs. Leighton G. Brown
- ♦ Linda L. Brown, ARNP, MSN
- ♦ Wendell and Betty P. Brown
- ♦ Mr. and Mrs. Harold Brownstein
- ♦ Michael J. Bruce
- ♦ Dr. Robert Brueck
- ♦ Al and Georgia Bruggemeyer
- ♦ Douglas Brunner
- ♦ J. Michael and Teresa L. Bruno
- ♦ Dr. and Mrs. John S. Bruno
- ♦ Chuck and Dee Bryan
- ♦ Linda L. Buettner Ph.D. CTRS
- ♦ James W. and Barbara J. Burkett
- ♦ Wanda Burkey
- ♦ Kevin Burns
- ♦ Dr. and Mrs. Robert L. Burns
- ♦ Dr. and Mrs. David R. Butcher
- ♦ Dr. and Mrs. John T. Butler
- ♦ C. W. Smith Imported Antiques
- ♦ Deva Caanathan
- ♦ Cabela's, Inc.
- ♦ Cabling Technologies
- ♦ Anthony and Karen-Butler Cahill
- ♦ Camp, Dresser & McKee, Inc.
- ♦ Larry D. and Sandra Gail Campbell
- ♦ Stephen Campbell
- ♦ Campiello's
- ♦ Cape Coral Community Foundation
- ♦ Captiva Island Inn Bed & Breakfast
- ♦ Michael J. Carlin
- ♦ Carlson Harris General Contractors, Inc.
- ♦ Constance B. Carmody, ARNP
- ♦ William M. Carpenter
- ♦ Carpet Outlet
- ♦ James and Susan S. Carr
- ♦ Dr. Cecil Carter
- ♦ Mary B. Carter
- ♦ Dr. Jack C. Carver
- ♦ Darryl C. Casanueva
- ♦ Case Companies, Inc.
- ♦ CBL & Associates
- ♦ Cement Industries, Inc.
- ♦ CH2M HILL
- ♦ The Chamber of Southwest Florida
- ♦ Championship Field Construction, Inc.
- ♦ Marilyn L. and H. Clayton Chandler
- ♦ Tina and Bob Chaphe
- ♦ Dr. and Mrs. Nelson Charles
- ♦ Charlotte Sanitation
- ♦ Charlotte State Bank
- ♦ Milo E. Chelovitz
- ♦ Cherry & Edgar, P.A.
- ♦ Ruth S. Child
- ♦ Dr. Lois R. Christensen
- ♦ Cynthia J. Christman
- ♦ Lloyd A. Chung
- ♦ Dr. Pauline Chusid

EMERALD CIRCLE (\$1,000 - \$4,999)

- ♦ 3M Matching Gift Program
- ♦ Mr. Juan L. Abascal & Dr. Daysi Mejia
- ♦ Mr. and Mrs. Don W. Abbott
- ♦ Steven and Mary Paige Abbott
- ♦ Wasif and Leah Abboushi
- ♦ Gary Abernathy and Darlene McCloud
- ♦ Accessible Sports & Recreational Activities Project, Inc.
- ♦ Don E. Ackerman
- ♦ Acousti Engineering Company of Florida
- ♦ Janet L. Adams
- ♦ Adams Bros. Cabinetry, Inc.
- ♦ Advanced Management Corporation
- ♦ Advanced Masonry Systems
- ♦ Mr. and Mrs. Robert C. Adkins
- ♦ ADT Security Services
- ♦ AEC National, Inc.
- ♦ Aetna Construction, Inc.
- ♦ A.G. Edwards & Sons
- ♦ Stewart Aiken
- ♦ John and Susan Akitt
- ♦ Albertson's
- ♦ Georgia Allen
- ♦ Jack E. Allen
- ♦ Paul Allen
- ♦ Dr. and Mrs. Matthew W. Allen, IV
- ♦ Alliance Financial Group
- ♦ Allison N. Allie
- ♦ Allied Doors, Inc.
- ♦ Mary Allison
- ♦ Allsafe Medical, Inc.
- ♦ Alltel
- ♦ Mr. and Mrs. Arnold R. Alshuler
- ♦ Alternative Investments
- ♦ Resources, Inc.
- ♦ Amalgamated Glass, Inc.
- ♦ American Diabetic Support Group
- ♦ American Engineering & Development Corp
- ♦ Ameripath
- ♦ Harris J. Amhowitz
- ♦ Lawrence J. Amon
- ♦ Dorothy Amphor
- ♦ Basil and Patricia Anderson
- ♦ Susan F. and Donald C. Anderson
- ♦ Donald J. Anderson



- ♦ ASHRAE Southwest Florida Chapter
- ♦ Mark Asperilla
- ♦ Associates in Entrepreneurship Education
- ♦ Association of Schools of Allied Health Professions
- ♦ Audrey's Attic & Annex
- ♦ Audubon Society of Southwest Florida, Inc.
- ♦ Lee A. Augsburg
- ♦ William W. Ausbon
- ♦ Dr. Ahmad F. Azam
- ♦ Azar Gallery Oriental Rugs
- ♦ BRPH Architects & Engineers, Inc.
- ♦ Dr. Robert G. Bachand
- ♦ Jennifer Baeza
- ♦ Francis P. Bailey
- ♦ Bailey's General Store
- ♦ Jay H. and Patti Baker
- ♦ David and Karrie Balza
- ♦ Bank One, NA
- ♦ The BankAtlantic Foundation
- ♦ Mary B. Banks
- ♦ Richard C. Banks, Ph.D.
- ♦ Banks Engineering, Inc.
- ♦ Marsha Bankston
- ♦ Baring Industries
- ♦ Lilian Barroso

- ♦ Mr. Larry Bird
- ♦ Renee M. Black
- ♦ Dr. and Mrs. James D. Blagg, Jr.
- ♦ Howard and Susan Blank
- ♦ Bleu Provence Restaurant
- ♦ Les and Sue Blumberg
- ♦ In Memory of Herman O Bly
- ♦ BNY Mellon Wealth Management
- ♦ Board of County Commissioners Sarasota County
- ♦ Robert E. Boardman
- ♦ Bill and Cheryl Bogard
- ♦ Nancy and Steven Bolander
- ♦ Glen and Lonnie Bomberger
- ♦ Bond, Schoeneck & King, P.A.
- ♦ Dr. and Mrs. Gary Bonvillian
- ♦ Jane Bopp
- ♦ Jane E. and Richard J. Borchers
- ♦ Nelson Bourdeau, Jr.
- ♦ Nico Borgia
- ♦ Mr. and Mrs. Sam Borr
- ♦ Boston's on the Beach
- ♦ Stefan and Jennie Bothe
- ♦ Daniel and Laura Bourdeau
- ♦ Paul T. Boudreaux
- ♦ John and Barbara Bowlin
- ♦ Bowman Internet Systems, LLC
- ♦ Bradanna, Inc.

HONOR ROLL OF DONORS

- ♦ Patrick Ciniello
- ♦ Cintas Corporation
- ♦ George and Linda Ciprich
- ♦ Eleanor Claiborne
- ♦ Claiborne and Ned Foulds Foundation
- ♦ Andrea Clark Brown
- ♦ Classic Basketball, Inc.
- ♦ Claymore Securities, Inc
- ♦ The Club at Mediterra
- ♦ The Club at Naples Bay Resort
- ♦ Coastal Engineering Consultants, Inc.
- ♦ Nancy Cobb-Lippens and Stephen Lippens*
- ♦ Cohen & Grigsby, P.C.
- ♦ Barbara B. and Kevin G. Coleman
- ♦ Collier Neurologic Specialists, LLC
- ♦ Dr. and Mrs. E. F. Collins
- ♦ Columbia Fawcett Memorial Hospital
- ♦ Columbia Healthcare's Lee County Network
- ♦ Richard D. and Elizabeth R. Colvin
- ♦ Mrs. James Comer
- ♦ Comerica
- ♦ Community Bank of Naples
- ♦ Community School of Naples
- ♦ Dave and Jane Conner
- ♦ Construction Advisors
- ♦ Continental Construction
- ♦ David L. Cook
- ♦ Mr. and Mrs. Francis J. Coomes
- ♦ Coopers & Lybrand
- ♦ Mr. and Mrs. David L. Copham
- ♦ Valerie Corace
- ♦ Coral Hospitality
- ♦ Donald and Mary Corcelli
- ♦ Coreslab Structures
- ♦ Don and Barbara Corll
- ♦ Armand and Barbara Cornellier
- ♦ James R. Cote
- ♦ Country Creek Community Charities
- ♦ Covanta Energy
- ♦ Jane A. Cox
- ♦ Rachel Cox
- ♦ The Crabill Family
- ♦ Wayne Craven
- ♦ Cherrill L. and Dick Cregar
- ♦ Aileen B. Cripps
- ♦ Dr. W. Jack Crocker
- ♦ Amanda B. Cross
- ♦ Culligan Water Conditioning
- ♦ Mr. and Mrs. Norman H. Curtis
- ♦ Custom Welding & Fabrications, Inc.
- ♦ Cypress Cove at HealthPark Florida
- ♦ Dade Behring
- ♦ David J. Dale
- ♦ William L. and Susan L. Dalton
- ♦ James D. Dati
- ♦ Daughters of the American Revolution - Florida State Society
- ♦ Dave Foote Environmental Construction
- ♦ David Leas Insurance Services, Inc.
- ♦ Carol E. Davis
- ♦ Ken and Ruth Davis
- ♦ Kris and Kate Davis
- ♦ Wallace L. Dawson
- ♦ Mr. and Mrs. Frederick A. Deal
- ♦ Fernando and Kimberly Del Dago
- ♦ William Delayo
- ♦ Delisi Fitzgerald, Inc.
- ♦ Delta Painting, Inc.
- ♦ Bob DeMao
- ♦ Howard and Helen DeMartini
- ♦ Demko Vending Food Service Management, Inc.
- ♦ Betty Ann Denholtz Memorial Scholarship Fund
- ♦ Ruth B. Denholtz
- ♦ Bill and Susan Dennis
- ♦ Terry Dennis
- ♦ Denture & Dental Center
- ♦ John C. Deppman and Clara Yu
- ♦ Cynthia L. and William J. Deragon
- ♦ Cathy C. and Andrew P. DeSalvo
- ♦ Virginia P. and Edward H. Devine, III
- ♦ DeVoe Cadillac
- ♦ Ned Dewhirst
- ♦ Caroline Dickinson
- ♦ Nan L. Dietrich
- ♦ Janet and Robert Diotalevi
- ♦ Dr. and Mrs. Frank Diplacido
- ♦ Distinctive Communities
- ♦ Diversified Conference Management, Inc.
- ♦ Dr. and Mrs. Duane Dobbert
- ♦ Patricia K. and Wesley W. Dobbins
- ♦ Dominos Pizza
- ♦ Charles J. Donches
- ♦ Eileen M. Dondero
- ♦ Richard Dondero
- ♦ Rebecca Donlan
- ♦ Larry P. and Mary A. Donovan
- ♦ Dooley & Mack Constructors, Inc.
- ♦ Carolyn Douglas
- ♦ The Dow Chemical Company Foundation
- ♦ Cathy Doyle
- ♦ Doyle Conflict Resolution, Inc.
- ♦ Robin and Kris Doyle
- ♦ Peter Droscher
- ♦ Michael Duever
- ♦ Cathy J. Duff
- ♦ Mrs. Barbara Dufrane
- ♦ Robert L. DuGene*
- ♦ Joann and Marty Duncan
- ♦ Richard Dundee
- ♦ Edward Dunlap
- ♦ East Indies Trading Company
- ♦ East Pointe Hospital Auxiliary
- ♦ Mr. and Mrs. Mark Eastman
- ♦ Dr. Karen Eastwood
- ♦ Robert J. and Cornelia C. Eaton
- ♦ Dr. and Mrs. Charles Eby
- ♦ Jodi C. Edens
- ♦ Edison Festival of Light, Inc.
- ♦ Edison National Bank
- ♦ EHC, Inc.
- ♦ Ellen K. Edmeades
- ♦ Edward Don & Company
- ♦ Robert T. Edwards
- ♦ Maryan and Arnie Egan
- ♦ Thomas Ehlers and Sandy McCartney Ehlers
- ♦ Wilbur and Kate Eichler
- ♦ Steve W. Eisenberg
- ♦ Elcon Electric Incorporated
- ♦ James Eldridge
- ♦ Elias Brothers Communities Management, Inc
- ♦ Elite Cabinetry Inc.
- ♦ Sue D. Ellis
- ♦ David A. and Jacqueline A. Emma
- ♦ Endo Pharmaceuticals Inc.
- ♦ Energenics Corporation
- ♦ Enterprise Charlotte Foundation, Inc.
- ♦ Enterprise Leasing Company
- ♦ Enterprise Rent-A-Car Foundation
- ♦ Erickson Herscoe De Stefano & Partners
- ♦ Christina Esson
- ♦ Estero Bay Buddies, Inc.
- ♦ Estero High School
- ♦ The Estes Family
- ♦ Amanda Evans
- ♦ Andrew Evans
- ♦ George and Joan Exner
- ♦ Extreme Networks
- ♦ Extreme Turf, Inc.
- ♦ The Ezzell Family
- ♦ FAU, Department of Educational Leadership
- ♦ Carl Fazio, Jr
- ♦ Mrs. J. H. Fears
- ♦ Feasnomics
- ♦ Gwen H. Feather*
- ♦ Fed Ex
- ♦ Jack Fenwick
- ♦ Thomas G. and Barbara Fewster
- ♦ Thomas G. and Beverly Fewster
- ♦ Fidelity National Title
- ♦ Dr. and Mrs. John S. Fifer
- ♦ Fifty/50 Floral Art
- ♦ Dr. and Mrs. Matthew J. Fineman
- ♦ Fireservice, Inc.
- ♦ Lynda R. Firment, Ph.D., A.R.N.P.
- ♦ First International Financial Corp.
- ♦ First National Bank
- ♦ First National Bank of Chicago Foundation
- ♦ First Union National Bank Foundation
- ♦ Fish Tale Sales & Services at Fish Tale Marina
- ♦ Fishel & Dowdy Jeweler
- ♦ Fisk Electric Company
- ♦ Dean and Alice Fjelstul
- ♦ Florida Architects, Inc.
- ♦ Florida Association of Mortgage Brokers
- ♦ Florida Bay Communities
- ♦ Florida Endangered Wildlife, Inc.
- ♦ Florida Engineering Foundation, Inc.
- ♦ The Florida Everblades
- ♦ Florida Environmental
- ♦ Florida Gulf Bank
- ♦ The Florida Gulf Coast Group
- ♦ Florida Hospices and Palliative Care, Inc.
- ♦ Florida Nurses Assoc., Dist. #7
- ♦ Florida Rock Industries, Inc.
- ♦ Florida Watercolor Society
- ♦ Florida Wildlife Federation
- ♦ Paul* and Aline Flynn
- ♦ Susan N. Fohs
- ♦ Food Services, Inc.
- ♦ Mr. and Mrs. Willis E. Forsyth
- ♦ Fort Myers High School
- ♦ Fort Myers Lee County Garden Council, Inc.
- ♦ Fort Myers Public Library, Inc.
- ♦ Fort Myers Rod & Gun Club, Inc.
- ♦ Frank and Judy Fought
- ♦ Foundation for Academic Educators, Inc.
- ♦ Foundation for Geriatric Education
- ♦ Francis Engineering, Inc.
- ♦ Anthony and Melissa Franco
- ♦ J. M. (Jerry) Franklin
- ♦ Eugene and Mary Frey
- ♦ Doris Fritcher
- ♦ Chas and Laurie Fritz
- ♦ Mr. and Mrs. J. Fritz
- ♦ Terri Fritz
- ♦ G. C. Building Products
- ♦ Lamar Gable
- ♦ Bruce and Karen Galbraith
- ♦ Roberto and Renee Garcia
- ♦ Mr. and Mrs. Stowe T. Gardner
- ♦ N. T. Gargiulo LP
- ♦ Garvin & Tripp
- ♦ Gatewood Glass
- ♦ The GE Fund
- ♦ E. James Geater
- ♦ Bodil and George Gellman
- ♦ Tina Marie Gelpi
- ♦ Geraci Travel
- ♦ Joyce and Paul Gerber
- ♦ German American Club - Harmonie
- ♦ Shirley K. Gerstenberger
- ♦ Marc and Geraldine Gertner
- ♦ The Gettys Group, Inc.
- ♦ GFWC Florida Federation of Women's Clubs
- ♦ Frank L. and Donna M. Giannuzzi
- ♦ David and Joan Glacken
- ♦ Glase Golf Craft
- ♦ Helen Glass
- ♦ Glenview at Pelican Bay
- ♦ John W. Gnagoy
- ♦ Jennifer Goen
- ♦ Dr. and Mrs. Jacob H. Goldberger
- ♦ Maureen Golden
- ♦ Golden Key National Honor Society
- ♦ Francine Gomberg
- ♦ Mr. and Mrs. Dudley Goodlette
- ♦ Michael A. Gookin
- ♦ Barbara M. Goodbody
- ♦ Gora/McGahey Associates in Architecture
- ♦ Janet L. and Gregory F. Gordon
- ♦ Dr. and Mrs. Tom W. Gore
- ♦ Dennis Gormley
- ♦ Phyllis and George Gotschall
- ♦ Tom Grady
- ♦ Mr. and Mrs. Thomas C. Graham
- ♦ Grande Oak Development
- ♦ Don and Kathy Grandi
- ♦ Ruth T. Grandin
- ♦ Billy D. Grant
- ♦ Michael Grant
- ♦ Mr. and Mrs. Wallace M. Graves
- ♦ Amy and Peter Gravina
- ♦ James and Amber Greco
- ♦ Bruce Green
- ♦ Robert V. and Marcia M. Greene
- ♦ Dr. and Mrs. Glen E. Gresham
- ♦ David Grunberg
- ♦ John and Nancy Guerra
- ♦ Gulf Bay Communities
- ♦ Gulf Bay Group of Companies
- ♦ Gulf Citrus Growers Association
- ♦ Gulfoast Coin & Jewelry Brokers
- ♦ Gulf Disposal, Inc.
- ♦ GulfPoint Construction Company
- ♦ Guymann Construction of Florida, Inc.
- ♦ Mrs. Rudolf F. Haffenreffer, IV
- ♦ Dr. and Mrs. J. Stewart Hagen
- ♦ Hahn Loeser & Parks LLP
- ♦ Sven Hahues
- ♦ David and Gail Hall
- ♦ Larry and Judy Halpin

* Deceased

HONOR ROLL OF DONORS

- ♦ Hamilton Harbor Marina, Inc.
- ♦ Mr. and Mrs. Kenneth Hamming
- ♦ Hampton - Inn Naples I-75
- ♦ William W. Hansell
- ♦ Harlan S. and Ruth Hansen
- ♦ Albert and Sally Hanser
- ♦ Hanser Family Foundation
- ♦ Stanley and Louise Hardy
- ♦ Bette Harig, M.D.
- ♦ Mr. and Mrs. John H. Harkins
- ♦ Edward and Diane Harlyvetch
- ♦ Harmonized Customs Brokers, Inc.
- ♦ Harold L. Wyman Foundation, Inc.
- ♦ Dr. and Mrs. Thomas C. Harrington
- ♦ Chief Robert and Mrs. Nancy Harris
- ♦ Sam and Judi Harris
- ♦ Harris Bank
- ♦ Barry Hastings
- ♦ Timothy Haw
- ♦ Elaine Hawkins
- ♦ Adrienne M. Hayes-Jones
- ♦ Hazelbaker Foundation
- ♦ HDG Communities
- ♦ Health Resources Corporation
- ♦ HealthPark
- ♦ David Heald
- ♦ Tom and Jan Healy
- ♦ Jim and Jade Hehl
- ♦ Rebecca and Richard Heins
- ♦ Dr. Gene W. Hemp
- ♦ William M. Hendricks Family Foundation
- ♦ Brian and Elaine Henry
- ♦ Leo Hertzog
- ♦ Ruth and Douglas Hester
- ♦ Julie Heuer
- ♦ Jack and Marjorie Highfield
- ♦ Michael D. and Deborah S. Highfield
- ♦ Maurice and Marie Hillmyer
- ♦ Hilton Marco Island Beach Resort
- ♦ Donald R. and Carolyn Hodges
- ♦ Robert F. Hoel, Jr.
- ♦ Ernst W. B. Hoen
- ♦ Hollywood Woodwork, Inc.
- ♦ Mildred B. and Albert M. Holtz
- ♦ Rhonda J. Holtzclaw
- ♦ Madeline and Scott Holzem
- ♦ Charles B. and Audrey K. Hood
- ♦ The Hopkins Family
- ♦ Jeanne M. Hoppie
- ♦ Jeffrey S. Horne
- ♦ J. Webb Horton
- ♦ Mrs. Jeffrey R. Hossler
- ♦ Charles and Barb Hostetler
- ♦ Richard and Jennifer Housh
- ♦ Sherree Houston
- ♦ Elaine Hozdik
- ♦ Adrian Hudler
- ♦ Dr. and Mrs. Bennett Hudson
- ♦ Dr. and Mrs. Bruce Hudson and Nathan Hudson
- ♦ Mr. and Mrs. Gareth K. Hudson - In Memory of Julian L. Hudson
- ♦ Hughes, Snell & Company, P.A.
- ♦ Dottie Hummel
- ♦ Nancy Humphrey
- ♦ Humphrey-Rosal Architects
- ♦ George Hunt
- ♦ Larry I. Hunt
- ♦ Hunter Douglas Hospitality
- ♦ Hypower
- ♦ IBM Matching Grants Program
- ♦ Ikon



- ♦ Inside Out
- ♦ Insurance & Risk Management Services, Inc.
- ♦ IntelliNet
- ♦ International Services Center, Inc.
- ♦ IPB Development, LLC
- ♦ Dr. Madelyn Isaacs and Chris Smith
- ♦ David Ivankovic
- ♦ J. & D. Grading, Inc.
- ♦ JJB Management & Consulting, Inc.
- ♦ JFK & Associates, Inc.
- ♦ J. J. Taylor Distributing Fort Myers-Naples, Inc.
- ♦ Lynda Jack
- ♦ Jerome A. and Bette J.S. Jackson
- ♦ David and Donna Jaeger
- ♦ Roger W. and Donna W. Jaeger
- ♦ Jeffrey Estate & Precious Jewels
- ♦ Jenks Builders, Inc.
- ♦ Jensen Underground Utilities, Inc.
- ♦ George and Philomena Johanssen
- ♦ John Madden Company
- ♦ John R. Wood, Inc. Realtors
- ♦ Claire and George Johnson
- ♦ F. Edward Johnson
- ♦ Gary and Teresa Johnson
- ♦ Lewis Johnson
- ♦ Michael Johnson
- ♦ Rick and Catherine Johnson
- ♦ Johnson & Wales University
- ♦ Otis L. Jordan*
- ♦ Ken and Rita Jorgensen
- ♦ K C Stock Foundation, Inc.
- ♦ Dr. Abbott Kagan II
- ♦ The Kakkuri Family
- ♦ Scott L. Karakas
- ♦ H. C. Kazanas, Ph.D.
- ♦ Nick Kellen
- ♦ Mr. and Mrs. Daniel N. Keller
- ♦ William G. and Lois E. Kelley
- ♦ Richard C. Kennedy
- ♦ Peter Kent
- ♦ Kevin L. Erwin Consulting Ecologist, Inc.
- ♦ Kevin M. Burns & Associates, P.A.
- ♦ Key Foundation
- ♦ KeyCorp

- ♦ Mr. and Mrs. James W. Keyser
- ♦ Key Western Grille
- ♦ Donald R. Kielgas
- ♦ Kevin D. Kiley, D.D.S.
- ♦ Charles and Abby Kleman
- ♦ Kathryn A. Kleist
- ♦ Priscilla P. Kluckhuhn
- ♦ Ms. Janet Kneller
- ♦ Knott & Consoer P.A.
- ♦ Koch & Company CPAs, P.A.
- ♦ Maria Koenig
- ♦ Robert A. Koenig
- ♦ Judith A. Koppelman
- ♦ Gloria Korman
- ♦ Mary J. Koskinas
- ♦ Matthew Kragh
- ♦ Mr. and Mrs. Thomas Krick
- ♦ Michele Kroffke
- ♦ Mrs. Richard B. Kron
- ♦ Edward and Linda Krukowski
- ♦ George A. Krumenacker
- ♦ Margaret and Robert A. Kruse
- ♦ Leila LaCrosse
- ♦ Janet and Dan La Mountt
- ♦ Landmar Group, LLC
- ♦ Dr. Barry E. Langford
- ♦ Tony Lapi
- ♦ La Quinta Inn & Suites Airport
- ♦ W & J Larson Family Foundation
- ♦ L.A.T. Foundation
- ♦ Dean Lauritzen
- ♦ Dr. Brenda B. Lazarus
- ♦ Thomas C. Leduc
- ♦ Lee Building Industry Association, Inc.
- ♦ Lee County Community Tennis Association, Inc.
- ♦ Lee County Hotel & Motel Association, Inc.
- ♦ Lee County Port Authority
- ♦ The Jim Lee Family
- ♦ Lee Memorial Emergency Physicians
- ♦ Lee Memorial Home Health
- ♦ Judith Hudson Lefkowitz, Meredith Hudson Marcum, Gareth Kingsbury Hudson and Bruce Wyeth Hudson, M.D.,
- ♦ Dr. and Mrs. Peter C. Lefferts
- ♦ Elise P. Lehman
- ♦ Thomas A. Leipzig
- ♦ Vee H. Leonard
- ♦ Mr. and Mrs. Willi Lerner
- ♦ Chip and Sheryl Lesch
- ♦ Nancy O. and Donald W. Leshner
- ♦ Clark R. and Karen B. Lewis
- ♦ David Lewis
- ♦ Gordon and Susette Lewis
- ♦ Mr. and Mrs. Phil Lewis
- ♦ Lexus of Fort Myers
- ♦ Liberty Mutual Insurance Co.
- ♦ David and Sunny Liddell
- ♦ Martha Lieb-Cox
- ♦ Jack W. Liebert
- ♦ Lloyd N. Liggett
- ♦ Laird A. and Laurie D. Lile
- ♦ Patricia Limegrover and Max Furbringer
- ♦ Nilda and Harry W. Lindsay
- ♦ Carol Jean Locke
- ♦ Garry and Suzanne Long
- ♦ Jack and Pat Long
- ♦ Jorge and Carol Lopez
- ♦ Helen Lord
- ♦ Mark Loren Designs, Inc.
- ♦ Lotspeich Company of Florida, Inc.
- ♦ Dr. and Mrs. Gary Lounsberry
- ♦ The David A. Lounsbury Family
- ♦ Lowes Charitable & Educational Foundation
- ♦ Brian D. and Melinda L. Lucas
- ♦ Max Lummis
- ♦ Mr. and Mrs. Thomas C. Lund
- ♦ Henry and Suzanne Lurie
- ♦ Elizabeth H. Lusht
- ♦ Lutgert Insurance
- ♦ Lawrence E. Lykins
- ♦ William R. and Barbara J. Lymangood
- ♦ James S. and Claire H. Lynch
- ♦ M.C. Johnson Co, Inc.
- ♦ M & P Reynolds Enterprises, Inc.
- ♦ Robert J. and Mariann T. MacDonald
- ♦ Mary and J. Hugh MacKellar
- ♦ Trevor MacKellar
- ♦ Eila and Rod MacKenzie
- ♦ Mr. and Mrs. John A. Macleod
- ♦ Major League Baseball Players Trust for Children
- ♦ Mark Makara
- ♦ Manhattan Construction Company
- ♦ Miriam and Sonny Mandell
- ♦ David B. and Tina M. Mantel
- ♦ March of Dimes
- ♦ Mr. and Mrs. Edward S. Marco
- ♦ Marco Island Concert Choir
- ♦ Marco Island Shell Club
- ♦ Douglas Marcotte
- ♦ Camille and Sabino Marinella
- ♦ Paul* and Joan Marinelli
- ♦ Mariner Properties Development, Inc.
- ♦ Marsh Consumer Connexions
- ♦ Martha H. and William J. Marland
- ♦ Richard J. Marsh
- ♦ Daniel and Janet Martin
- ♦ Linda and John Martin
- ♦ Ingrid Martinez-Rico and Craig W. Heller
- ♦ Mr. and Mrs. R. A. Mascott
- ♦ Mathews Construction
- ♦ Matthew W. Mathias
- ♦ Dr. Lena A. Delisser-Matthews
- ♦ Richard and Marianne Matties
- ♦ The Mattingly Family
- ♦ Dr. and Mrs. M. E. Mattingly
- ♦ Craig and Deb Matus
- ♦ Dr. Ingeborg G. Mauksch*
- ♦ Tom and Sara Mayo
- ♦ Linda L. McAlister
- ♦ Tim and Kelly McCarthy
- ♦ Dee and Speed* McClay
- ♦ Vikki McConnell
- ♦ Robert W. McCoy, Jr.
- ♦ Gerald C. and Helen M. McDonough
- ♦ Johnny E. McGaha
- ♦ Rose McGahee
- ♦ Gordon McGee*
- ♦ Dr. and Mrs. William McGrady
- ♦ Melissa McIntosh
- ♦ Helen L. McIntyre
- ♦ McIntyre Properties, LLC
- ♦ Mr. and Mrs. Jack H. McKenzie
- ♦ Charles and Lil McKinney
- ♦ W. Thom and Vicki McKinney
- ♦ Peter D. and Anne M. McLeod
- ♦ John F. McMillen

HONOR ROLL OF DONORS

- ♦ Edward P. McNamara
- ♦ John and May McShane
- ♦ Donna S. McVety, R.N., Ph.D.
- ♦ Mecca Resources, Inc.
- ♦ Robert Meister
- ♦ Mello Concrete Service, Inc.
- ♦ Merrill Gardens at Naples
- ♦ Merson, Sawyer, Johnson, Dunwody & Cole
- ♦ Michael R. Smith and Associates, Inc.
- ♦ Madeleine and George Michaels
- ♦ Larry and Linda Mignerey
- ♦ Ken and Pat Millar
- ♦ Jack D. Miller
- ♦ Megan Miller
- ♦ Mr. and Mrs. T. Wainwright Miller, Jr.
- ♦ William Mills
- ♦ Karen N. Mock
- ♦ Helen V. Moe
- ♦ Moe's Southwest Grill
- ♦ Dr. and Mrs. L. C. Mogelvang
- ♦ Molzan & Gray Properties
- ♦ Manuel Mon
- ♦ Monarch Mortgage Group Inc.
- ♦ Deborah Moore
- ♦ Dave P. Moran
- ♦ Michael J. Morgan
- ♦ Sandra Morgan
- ♦ Morgan Stanley Matching Gifts Program
- ♦ Wendy Morris
- ♦ Cyndy Peacock and Roger F. Morrison
- ♦ Moss and Associates
- ♦ Elizabeth Mossman
- ♦ Movin' On Mobility
- ♦ The Mowreys
- ♦ John S. Mueller
- ♦ Mr. and Mrs. William J. Mueller
- ♦ Emilio M. Mufdi
- ♦ Rima and Edward Mullins
- ♦ James P. Murphy
- ♦ Donald and Elizabeth Murray
- ♦ Mr. and Mrs. Michael Murray
- ♦ Multiple Activity Computing
- ♦ Myerlee Medical Association
- ♦ Lewis Myers
- ♦ Myra and Philip* Nalibotsky
- ♦ Naples Asset Management Co., LLC
- ♦ Naples Council On World Affairs, Inc.
- ♦ Naples Pathology Associates, PA
- ♦ Naples Town Hall
- ♦ Naples Zoo
- ♦ Ian T. and Diane M. Nathanson
- ♦ National Association of Health Education Centers
- ♦ National Construction Rentals, Inc.
- ♦ D Michael and Kathleen A. Nearing
- ♦ Donald Nelson
- ♦ Ralph and Marge Nelson
- ♦ Diana Nerestant*
- ♦ Linda and Donald Nettis
- ♦ NEV 2/11 Foundation
- ♦ Dr. and Mrs. Douglas Newland
- ♦ NewsBank
- ♦ The New York Community Trust
- ♦ New York Moves LLC
- ♦ William F. Niedermhofer
- ♦ C. W. Nimitz, Jr.
- ♦ Thomas J. and Elizabeth B. Nomina
- ♦ North Fort Myers High School
- ♦ Naples Shore Fund in honor of Betty Ford
- ♦ Northside Naples Kiwanis Foundation, Inc
- ♦ Northwestern Mutual Foundation Matching Gifts Program
- ♦ George Norton
- ♦ Renee and James Novakoff
- ♦ Judith L. Nuland, M.S.N., R.N.
- ♦ James L. Nulman
- ♦ Jim and Carol Oetter
- ♦ George and Donna Ohye
- ♦ Olde Cypress
- ♦ Lynn J. O'Hare
- ♦ Jon and Charleen Olliff
- ♦ Bob and Bari O'Neill
- ♦ Online Computer Library Center, Inc.
- ♦ Glenn P. and Jeanine R. Oorlog
- ♦ Mr. and Mrs. Thomas F. O'Reilly
- ♦ Michael E. Orlandi
- ♦ David and Elaine Orr
- ♦ Margaret Ort
- ♦ Thomas F. and Dorothy L. Orthman
- ♦ David Owen
- ♦ Robert and Shirley Ozycz
- ♦ PC Pro Schools, Inc.
- ♦ P J J D Enterprises, Inc.
- ♦ Palm Island Resort
- ♦ Park Shore Development
- ♦ Parker/Mudgett/Smith Architects, Inc.
- ♦ Gary and Carlene Pasche
- ♦ Patricia Pasden
- ♦ Dr. Dennis Pataniczek
- ♦ Patnode Roofing
- ♦ Harriet P. Patterson
- ♦ Paula Robertson & Associates, Inc.
- ♦ Mary S. and Richard A. Paulson
- ♦ Dr. Sandra Pavelka
- ♦ Drs. Peter D. and Regina L. Payne
- ♦ Mr. and Mrs. Vernon E. Peeples
- ♦ Pelican Bay Foundation
- ♦ Peninsula Improvement Corporation
- ♦ Peper, Martin, Jensen, Maichel and Hetlage
- ♦ Rosa and Tim Peck
- ♦ Michael Pecerì
- ♦ Performance Door and Hardware, Inc.
- ♦ Jill Peterson
- ♦ Kathy Peterson
- ♦ Judith B. and Vincent D. Pettinelli
- ♦ Pettinelli Family Foundation
- ♦ Alex Pezeshkan
- ♦ Phi Delta Kappa-SW Florida Chapter
- ♦ Wendy I. Piascik
- ♦ Pierce, Goodwin, Alexander & Linville
- ♦ Pink Shell Beach Resort
- ♦ Jim and Pat Piquette
- ♦ Anthony and Ricky Pires
- ♦ Dr. Josephine Tutino Polito
- ♦ Marydelle Polk
- ♦ CarolAnn P. Popovich
- ♦ Porter, Wright, Morris & Arthur LLP
- ♦ Christine J. and Bernard N. Portnoy
- ♦ Juanita M. Pray
- ♦ Nathan N. Prefer
- ♦ Preferred Travel
- ♦ Premium Tour & Travel
- ♦ Richard and Doris Price
- ♦ Bobby and Stella Pritchard
- ♦ Private Equity Group, L.L.C.
- ♦ Private Wealth Consultants
- ♦ Pro-Tech Caulking & Waterproofing, Inc.
- ♦ Prudential Securities, Incorporated
- ♦ Prudential Village Realty Place
- ♦ Quail West Golf and Country Club
- ♦ Lyle Quaintance
- ♦ Drs. J. Robert and Diana Quatroche
- ♦ Dick and Deedee Raby
- ♦ Bruce Ragain
- ♦ R&D Villas, Inc.
- ♦ R. G. Brown Properties
- ♦ Dr. and Mrs. Robert F. Rapp
- ♦ Rautio and Associates, Inc.
- ♦ Larry Ray
- ♦ Peggy Raynor
- ♦ James F. Reddington
- ♦ Mr. and Mrs. Martin A. Redovan
- ♦ Mary Reed
- ♦ Reed, Blackwood & Co., LLC
- ♦ Eileen F. Regelski
- ♦ Mary T. and Richard G. Reichle
- ♦ Dale Reiss and Jerome King
- ♦ William and Sheryl Renken
- ♦ Resun Leasing, Inc.
- ♦ Jim and Ann Reutter
- ♦ Retirement Advisors of America, Inc.
- ♦ RFH Consulting, Inc.
- ♦ RG Brown Properties
- ♦ Phillip and Joanne Ricciardiello
- ♦ David A. Rice
- ♦ John Richards II
- ♦ Mr. and Mrs. Joseph J. Richards
- ♦ Henry Richardson
- ♦ Richter Leadership Fund of the Community Foundation of Collier County
- ♦ Mrs. Pauline R. Riemer
- ♦ Right Way Plumbing Company
- ♦ Russell J. Ringland
- ♦ RJ Gators
- ♦ RL Homes
- ♦ Gerald Roberts
- ♦ Charles and Mary Robertson
- ♦ Dewie and Burt Robinson
- ♦ James N. and LaTeshia Robinson
- ♦ Ray Rodrigues
- ♦ Ruth L. Rodrigues
- ♦ Dr. Walter Rodriguez
- ♦ Anne M. Rogers
- ♦ Cecilia Rokusek
- ♦ Karen A. Rollins
- ♦ Dr. J. Michael Rollo and Ms. Amy S. Rollo
- ♦ Dorothea and James Rosner
- ♦ Diane Ross
- ♦ Louis R. Ross
- ♦ Rotary Club of Bonita Springs
- ♦ Alan Routh
- ♦ Todd Routh
- ♦ Royal Scoop Homemade Ice Cream
- ♦ RSM McGladrey, Inc.
- ♦ Esta and Alan Rubinstein
- ♦ Andrew Rudd
- ♦ Dr. and Mrs. Luis A. Ruilova
- ♦ Ruth Messmer Florist, Inc.
- ♦ Linda Ryan
- ♦ Robert and Cinda Ryan
- ♦ Ryder Orthopaedics, Inc
- ♦ Mary Ann and Klaus A. Saegebarth
- ♦ Safari Club International - Naples/ Fort Myers Chapter
- ♦ Saks Fifth Avenue
- ♦ Sakinah Salahu-Din
- ♦ Dr. and Mrs. Edward W. Salko
- ♦ SallieMae, Inc.
- ♦ Sam Galloway Ford
- ♦ Irma L. Sanchez
- ♦ Alan and Linda Sandlin
- ♦ Sanibel Captiva Conservation Foundation
- ♦ Sanibel Captiva Rotary Trust Fund
- ♦ Donald A. Sanneman
- ♦ Thomas Sansbury
- ♦ Rebecca Sarver
- ♦ Pete and Marilyn Savalli
- ♦ Michael L. Savarese and Mona Wright
- ♦ Steven Scheff
- ♦ Dennis Schehr
- ♦ Cheryl A. Scheiner
- ♦ Harvey Schestag
- ♦ Diane Schmidt
- ♦ Ian Schmoyer
- ♦ Jerry Schoenfeld
- ♦ Ron R. and Mary Jane Schneider Family Foundation, Inc.
- ♦ Mrs. Lester J. Scholl - In Memory of Lester J. Scholl
- ♦ Hank Schroeder
- ♦ Mr. David Schwab
- ♦ Mr. and Mrs. Samuel Schwartz
- ♦ Frank J. Scott, Sr. - In Memory of Susan McLaughlin Scott
- ♦ Jacob L. Scott
- ♦ Patricia Scott
- ♦ Dr. and Mrs. Roger D. Scott
- ♦ Barbara and Will Scott
- ♦ SCT Software & Resource Management Corporation
- ♦ Cheryl Seals-Gonzalez
- ♦ Pamela A. Seay
- ♦ Chalmers and Beatrice Sechrist
- ♦ The Seidler Foundation
- ♦ Jim Seitz
- ♦ Seventh Street REIT, Inc
- ♦ Shamrock Building Services
- ♦ Mr. and Mrs. William Shaver
- ♦ Sheeley Architects, Inc.
- ♦ Martin J. and Betteann L. Sherman
- ♦ The Sherwin-Williams Company
- ♦ Irving F. and Lee Sherwood

* Deceased



HONOR ROLL OF DONORS

- ♦ Dr. and Mrs. Allen B. Shevach
- ♦ SI Ventures
- ♦ Siemens Healthcare Diagnostics
- ♦ The SIFCO Foundation
- ♦ Dr. Miriam Silver
- ♦ Simonsen-Hickok Interiors of Naples, Inc.
- ♦ Dr. and Mrs. C. Norton Sims
- ♦ Ronald Sisson
- ♦ Roger Sitkins
- ♦ Sitkins Group
- ♦ Nancy and Ronald Skabar
- ♦ Carrie Skifton
- ♦ Paula Sklodowski
- ♦ Slavich & Associates
- ♦ SlingPage, Inc.
- ♦ Virginia and Robert Small
- ♦ Audrey J. Smandra
- ♦ Cynthia S. and Eugene H. Smith
- ♦ David and Sandy Smith
- ♦ Mr. and Mrs. Michael R. Smith
- ♦ Wade and Carol Smith
- ♦ Mr. and Mrs. William C. Smith
- ♦ Smith, Hendra & Gerson PA
- ♦ Ken Sneed & Associates
- ♦ Sheila J. Snow-Martineau
- ♦ Neal L. Snyder
- ♦ Paul and Paola Snyder
- ♦ Richard and Janet Somerlott
- ♦ Sony
- ♦ Larry and Eileen Southard
- ♦ South Florida Bank
- ♦ Southwest Florida Branch of ASCE
- ♦ SouthWest Direct
- ♦ Southeast Mechanical Contractors, LTD
- ♦ The Southwest Florida Attractions Association
- ♦ The Southwest Florida Conchologist Society, Inc.
- ♦ Southwest Florida Consolidated Services
- ♦ Southwest Florida Enterprises
- ♦ Southwest Florida Gator Club
- ♦ Southwest Florida Hispanic Chamber of Commerce
- ♦ Southwest Florida Oral & Facial Surgery
- ♦ Southwest FL Osteopathic Medical Assoc.
- ♦ Southwest Florida Urologic Associates
- ♦ Southwest Student Services Corporation
- ♦ Mark Spafford
- ♦ Mr. and Mrs. Stephen J. Spahr
- ♦ Jennifer and Richard Sparrow
- ♦ Spartan Masonry, LLC
- ♦ John Spear
- ♦ Dr. and Mrs. K.L. Spear
- ♦ Specialists in Reproductive Medicine and Surgery, P.A.
- ♦ Spectra Contract Flooring
- ♦ Spinal Cord Group of SW Florida, Inc.
- ♦ Virginia W. Splitt
- ♦ Sports Masters International, Inc.
- ♦ James D. Spounias
- ♦ Jim and Patty Sprankle
- ♦ Sprint PCS
- ♦ Mr. and Mrs. John M. Stafford
- ♦ Jeffrey Staner
- ♦ John G. and Patricia K. Starling

- ♦ State Wide Real Estate of Escanaba
- ♦ Bill Stauffer
- ♦ Steel Fabricators, LLC
- ♦ Steel, Hector & Davis, LLP
- ♦ Stellar Venture Partners, LLC
- ♦ Sterling Prestress, Inc.
- ♦ Thomas L. Stewart
- ♦ Barbara and Bill Stewart
- ♦ Larry Stiles
- ♦ Stillwell Enterprises
- ♦ Barbara J. Stites
- ♦ Dr. and Mrs. Charles A. Stokes
- ♦ Judith Stonecash
- ♦ Jerome M. Strauss
- ♦ Fran and Ray Strohm

- ♦ Peter A. Thomas
- ♦ Steven L. Thomas
- ♦ Marion Thompson
- ♦ M. Joyce Thornton
- ♦ Joan Timmons
- ♦ Dr. and Mrs. Benjamin K. Tipton
- ♦ Titan Custom Homes, Inc.
- ♦ Title Connection, LLC
- ♦ Rucker Todd
- ♦ Dr. and Mrs. Ronald B. Toll
- ♦ Todd and Wendy Tooley
- ♦ Patrick and Kathryn Tooman
- ♦ Jacquie Toth and Family
- ♦ Gay G. and Gary V. Trippe
- ♦ Mr. and Mrs. Steve Trudnak
- ♦ Marianne A. Tucker

- ♦ Deborah Ward
- ♦ Valmore L. Ward*
- ♦ Charles W. B. Wardell, Jr.
- ♦ Rodney L. and Helen M. Warden
- ♦ Water Enhancement & Restoration Coalition, Inc.
- ♦ Waterfront Realty Group, Inc.
- ♦ Waterside Shops at Pelican Bay
- ♦ Susan Watts
- ♦ Wayne Martin & Son
- ♦ The Weaver Family
- ♦ Weeks & Associates, Inc.
- ♦ Michael Weiler
- ♦ Vi and Jerry Weis
- ♦ A.H. & Helen L. Weiss Foundation
- ♦ Weller Pool Constructors
- ♦ W. Robert Welliver
- ♦ Ellen V. P. and Lloyd P. Wells
- ♦ Mr. and Mrs. Robert Wells
- ♦ Wells Fargo Home Mortgage
- ♦ Wentzel, Berry & Wentzel, & Phillips, P.A.
- ♦ Cynthia West
- ♦ West Bay Realty, Inc.
- ♦ Rebecca A. Westerhold
- ♦ Harold A. Westervelt
- ♦ WFTX-TV Fox 4
- ♦ WCCU FM 90.1
- ♦ Claudine Wetzel
- ♦ Mrs. John Whitcomb
- ♦ David and Kathleen Whitcomb
- ♦ Michael White
- ♦ Mr. and Mrs. Michael A. Wick
- ♦ Wiebel, Hennells & Carufe PA
- ♦ Mrs. Lawrence M. Wier
- ♦ Lula C. Wiggins
- ♦ Wilkison & Associates, Inc.
- ♦ Richard P. Williams
- ♦ Trudi Williams
- ♦ Richard and Ellen Williamson
- ♦ George W. Wilson
- ♦ Wiltshire, Whitley, Richardson & English, CPA
- ♦ Dr. Terry Wimberley
- ♦ Winfield Companies, LC
- ♦ John R. Winfield
- ♦ Roger L. and Velda Winkler
- ♦ Donald R. Witter, Jr.
- ♦ Kevin Wolf
- ♦ Martha O. and John M. Wolf
- ♦ Dr.* and Mrs. William A. Woffler
- ♦ Wolverine II, Inc.
- ♦ Woods & Wetlands, Inc.
- ♦ Bob and Mary Kae Woodworth
- ♦ Workplace Resource of Southwest Florida
- ♦ Worthington Country Club
- ♦ Edward Wotitzky
- ♦ Mr.* and Mrs. Leo Wotitzky
- ♦ Mr. and Mrs. Corbin Wyant
- ♦ Yamron Jewelers
- ♦ John Yasinsky
- ♦ Tony and Maxine Yates
- ♦ William P. and Vernadean Yeary
- ♦ YMCA, Collier County
- ♦ Yoder Brothers, Inc.
- ♦ William N. York
- ♦ Anne C. Young
- ♦ Young, Van Assenderp & Varnadoe
- ♦ Patricia Zehr
- ♦ Robert and Connie Ziegler
- ♦ Zeta Tau Alpha Foundation, Inc.
- ♦ ZHA, Inc.



- ♦ Stroemer & Company, PA
- ♦ Gretta Styles
- ♦ Reverend and Mrs. Israel Suarez
- ♦ Brian and Margaret Sullivan
- ♦ Linda S. Summers
- ♦ Suncoast Advanced Radiology Associates, P.A.
- ♦ Suncoast Dental Center, P.A.
- ♦ Sunniland Family Limited Partnership
- ♦ Surveying and Mapping, Inc.
- ♦ Suttie Golf School
- ♦ SW Florida Chinese Language School, Inc.
- ♦ SWF Culinary Alliance
- ♦ SW Florida Council for Environmental Education
- ♦ Robert and Linda Swank
- ♦ SWS Charitable Foundation, Inc.
- ♦ Madeleine R. Taeni
- ♦ Target Stores, Inc.
- ♦ Tarpon Coast National Bank
- ♦ John Tartaglia
- ♦ Lisa Adele Tashjian
- ♦ Tavilla Realty Associates
- ♦ Taylor Woodrow Communities
- ♦ Team Construction, LLC
- ♦ TECO - Peoples Gas
- ♦ George and Zenaida Theopistos
- ♦ Thermal Concepts, Inc.
- ♦ Gary L. Thomas
- ♦ James A. and Barbara A. Thomas

- ♦ Twenty/Twenty Worldwide Hospitality, LLC
- ♦ TWH Southwest Florida Division, LLC
- ♦ TwinEagles Golf & Country Club
- ♦ UBS Foundation USA Matching Gift Program
- ♦ U.S. Home Corporation
- ♦ Ulmer Construction, Inc.
- ♦ United Plastering
- ♦ United States Tennis Association - Florida Section, Inc.
- ♦ USA Funds
- ♦ Useppa Island Club
- ♦ USSI
- ♦ Mr. and Mrs. Tom Valentine
- ♦ Thomas Valesky
- ♦ Stuart Van Auken
- ♦ Sarita Van Vleck
- ♦ Holly A. Vaughn
- ♦ The Venetian
- ♦ Gina C. Ventresca
- ♦ Kimberly K. Vincent
- ♦ Visual Aids Electronics Corporation
- ♦ Charlie Vitale
- ♦ Zola and Jerry Von Deylen
- ♦ Mary S. Voytek
- ♦ Dr. Patricia Wachholz
- ♦ Jane Wagner
- ♦ Wal-Mart Foundation
- ♦ Wal-Mart Stores, Inc.
- ♦ Walker Parking Consultants
- ♦ Dr. Roberta W. and Richard J. Walsh

* Deceased

Formed in 1993, the Florida Gulf Coast University Foundation, Inc., supports the educational mission of the University. It serves as a channel for private gifts to FGCU through annual giving programs, planned gifts, capital and other special-purpose campaigns. It also raises awareness of the need to provide support, solicits gifts on behalf of the University and exercises fiduciary management of those gifts. Since its inception, it has raised more than \$200 million.



UNIVERSITY ADVANCEMENT



MAGIERA

Steve Magiera

Vice president for University Advancement

Oversees development officers and serves as executive director of the FGCU Foundation

Judie Cassidy

Senior director of advancement

Responsible for lead and strategic gift fundraising and scholarship stewardship

Peter Lefferts

Director of planned giving

Responsible for planned giving, alumni relations and annual giving



CASSIDY



LEFFERTS



LEHTOMAA

Linda Lehtomaa

Senior director of advancement

Responsible for developing funding for projects of strategic importance, including facilities, scholarships and academic chairs

Darlene McCloud

Director of major gifts

Works with individuals and businesses to support major gifts including endowed scholarships, programs and the First Generation Scholarship Program

Stanley "Butch" Perchan

Director of athletic advancement

Works with individuals and businesses to support athletic programs and facilities



McCLOUD



PERCHAN



**Florida Gulf Coast University
Foundation, Inc.**
10501 FGCU Boulevard South
Fort Myers, FL 33965-6565

NON-PROFIT ORG.
U.S. POSTAGE
PAID
FT. MYERS, FL
PERMIT NO. 498

