

A bald eagle is shown in profile, flying from left to right. The eagle's head is white with a sharp yellow beak. Its wings are dark brown with lighter feathers on the underside. The background is a clear blue sky. The entire image has a pixelated or mosaic-like texture.

**FGCU FOUNDATION
ANNUAL REPORT 2010-2011**



Dear Friends & Alumni,

Even in a challenging economy, Florida Gulf Coast University's continued strategic growth and expansion have brought new facilities to our campus, new programs for our students, and new opportunities for engagement with the community. This year's annual report celebrates these achievements, as well as honors those individuals whose commitment to, and support of, the university ensures that FGCU continues to meet its goals.

Because of the generosity of many, more qualified and deserving students are able to afford an FGCU education. Indeed, the FGCU Foundation awarded more than \$1.5 million in scholarships during the past year. These scholarships – recognizing merit, performance and financial need – transform the dream of a university education into reality for many deserving students.

This year, our enrollment reached almost 13,000 students. Along with this enrollment growth, the university's academic offerings expanded to include majors in software engineering and journalism and a doctorate in education. With degree programs in bioengineering, civil engineering, environmental engineering and software engineering, the U.A. Whitaker College of Engineering became a stand-alone college after previously operating as a school in the Lutgert College of Business.

This fall, many of our first-year students moved into the newly constructed Palmetto Hall in the South Village residential complex. Beginning in the spring of 2012, students in the health professions will begin attending classes and conducting research in Academic Building 8. This state-of-the-art building will provide technology-rich classrooms and laboratories for undergraduate and graduate programs in health-related disciplines such as Nursing, Nurse Anesthesia, Physical Therapy, Clinical Laboratory Sciences, Occupational Therapy and Human Performance. Finally, a 20,000-square-foot addition to our Student Union opened, offering expanded space for student clubs and activities – an important element of the FGCU student experience.

Additionally, we are proud that service learning hours provided by our students reached nearly 150,000 in the 2010-11 year. Since FGCU opened its doors in 1997, our students have provided more than 1 million service learning hours.

FGCU continues to be a dynamic community devoted to preparing future generations of leaders, while remaining committed to serving the Southwest Florida community. We take on this responsibility in partnership with you. Your support is critical to ensuring that our students today and into the future have the opportunity to achieve their dreams.

Thank you for your generosity.



OFFICERS

Chairperson:

James F. Knupp

Vice Chairperson:

John D. Fumagalli

Treasurer:

Charles D. Winton

Secretary:

Miller Couse

Assistant Treasurer:

Dr. Joseph Shepard

Executive Director:

Steve L. Magiera

MEMBERS

Richard C. Ackert*

John R. Alexander

Patricia M. Barton

Jack Blais

Dr. Wilson G. Bradshaw

Cornelius Cacho**

Timothy J. Cartwright

Joseph R. Catti*

Barbara DuFrane

Charles B. Edwards, Esq.*

Andrea R. Fraser, Esq.

Jeffrey D. Fridkin, Esq.*

Guenther Gosch

Larry Hart

Angela Hodge

David A. Holmes, Esq.

Laura A. Holquist

William N. Horowitz, Esq.*

Charles K. Idelson*

Kimberly Leach Johnson, Esq.

Sydney W. Kitson

Donald Lesch*

Dr. W. Bernard Lester

Dr. John R. Little

David Lucas

Dr. Stephen S. McIntosh*

Edward A. Morton*

James R. Nathan**

F. Fred Pezeshkan*

G. David Powell*

G. Jeffrey Provol

Thomas J. Rice

James Robinson, Esq.**

Dr. J. Michael Rollo

Ambassador Francis Rooney

Duane Stranahan, Jr., Esq.*

Peter Sulick*

Linda K. Taylor*

Dr. Ronald Toll

Dr. Allen S. Weiss**

Jaynie Whitcomb

Paul Woods

FOUNDATION FELLOWS

Dr. Fay Biles, Barron Collier III, Dr. Ben Hill Griffin, III,
Alan Korest, Juliet Sproul

* Chairperson Emeritus

** Term completed June 2011



Dear Friends,

Over the past year, I've had the great pleasure of serving as chair of the Florida Gulf Coast University Foundation Board. During my term I had the privilege of working with FGCU's talented development staff, and the opportunity to meet faculty and students and people in the Southwest Florida community who are committed to the university's success.

It's rewarding to tell the university's story, demonstrate its relevance to the community and explain the long-range vision for FGCU – then ask for investment in our shared ideal of a university completely integrated into the region.

Last year, the university's endowment grew to more than \$56 million and the FGCU Foundation was able to award more than \$1.5 million in scholarships to deserving students, providing access to our university to some who might not otherwise have had the opportunity to attend. This would not have been possible without the generous support of many individuals – both those with ties to the university and those with no direct affiliation.

What motivates them to become involved with FGCU is understanding the lasting impact the university has in virtually all areas of the region. FGCU graduates will become the community leaders of tomorrow, and in this report, you will read about some of the gifts that enable the university's faculty to give these future leaders the intellectual and practical skills they need to succeed.

These generous individuals who have made financial gifts to the university over the past year have my sincere thanks. You can be sure they also have the thanks of the many faculty, staff and students whose lives they've touched.

Donald "Chip" Lesch

Chairperson, 2010-2011

Florida Gulf Coast University Foundation

THE FGCU FOUNDATION ANNUAL REPORT 2010-2011

Wilson G. Bradshaw, Ph.D., President

Steve Magiera, FGCU Foundation Executive Director

Ken Schexnayder, Assistant Vice President,
Community Relations and Marketing

Karen Feldman, Editor

Drew Sterwald, Writer

Dave Anderson, Graphic Designer



TABLE OF CONTENTS

Looking Forward	4	Events	16
FGCU: By the numbers	6	Athletics	17
Lead Gifts	8	Alumni Association	18
Scholarships	10	Financials	20
Planned Giving	13	Endowed Funds	22
President's Society	15	Honor Roll of Donors	24

>> **LOOKING FORWARD**

Growth continues despite budget constraints

Florida Gulf Coast University continues on a path of steady, strategic growth to meet demands for more academic programs, classroom space and campus housing, despite budget challenges caused by a tight economy.

Due, in part, to the university's ability to provide competitive and affordable access to higher education, enrollment has reached almost 13,000 and is projected to top 22,000 within a decade.

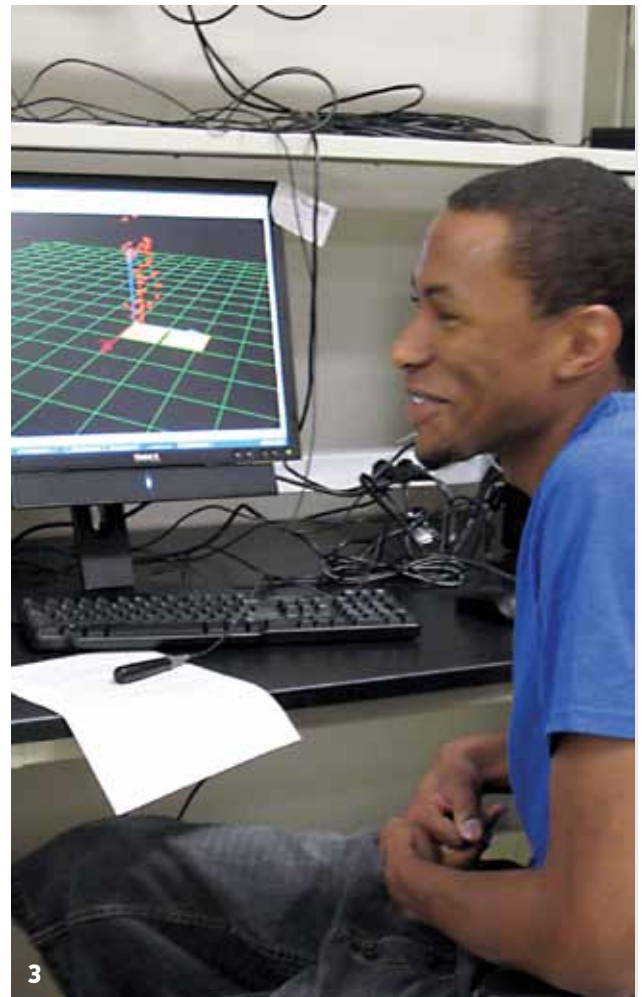
Degree programs expanded this year with additions that included a journalism major and a doctorate in education, bringing the totals to 52 undergraduate degrees, 30 graduate programs and three doctoral programs.

The university also established a new college, the U.A. Whitaker College of Engineering. Since 2005, when it opened as a school, the program has grown rapidly, offering undergraduate degrees in bioengineering, civil engineering and environmental engineering as well as computer science (now redesignated as software engineering).

The 2010-11 academic year also marked the first class of students to graduate in the physical therapy doctoral program.

Since opening in 1997, the campus has grown to include 89 buildings. Newest among them is the 415-bed Palmetto Hall in the South Village complex for resident freshmen. Housing options continue to expand as demand still exceeds availability, and the six-story Osprey Hall is scheduled to open in fall 2012.

As the number of students living in residence halls climbs – 3,675 as of fall 2011 – a more active campus culture has evolved. More than 150 student organizations, including two dozen sports



1. Academic Building 8, which will house the College of Health Professions, is scheduled to open in January 2012. 2. Chick-fil-A and Blu Sushi are two new dining options in the Student Union. 3. Software engineering is one of several degrees offered at the U.A. Whitaker College of Engineering. 4. The Student Union was recently expanded, adding 20,000 square feet. 5. The newest residence building, Palmetto Hall, opened this year, with Osprey Hall scheduled to open in fall 2012.

FGCU Archives

>> LOOKING FORWARD



clubs and 18 fraternities and sororities, now enrich student life.

Over the years, the student population has grown younger and more diverse; students 24 or younger now make up 76 percent of the student body, and 23 percent of all students are minorities. A diverse college campus supports academic and social development and provides a better understanding of the rapidly changing nature of life, work and relationships.

A 20,000-square-foot, \$11.6-million addition to the Student Union was recently completed, expanding the bookstore, the student lounge and meeting rooms. Blu Sushi and Chick-fil-A have joined other dining options in the building, which is being called Harv's Place in honor of Harvey and Janet Cohen's \$3 million gift. The building will be formally dedicated in January 2012.

Growth continues elsewhere on campus, despite state budgetary constraints.

The last five years have seen significant declines in Florida government support for the state university system, including FGCU. The completion of Academic Building 8 was dealt a serious blow when the final \$4.5 million to finish and furnish the College of Health Professions building was cut from the state budget.

However, FGCU's administration was able to redirect funds from other planned projects so that the building can open in January 2012 as originally scheduled. With state-of-the-art laboratory facilities and classroom spaces, the building will complete the academic core of the west side of campus and sustain health professions programs and enrollment for the next decade.

Off campus, the university reaches ever deeper into the community through civic engagement and private/public partnerships that align academic programs and research with the wider world. Student service learning reached close to 150,000 hours in the 2010-11 year and cumulatively topped 1 million hours since the university opened.

Meanwhile, the university's Small Business Development Center did its part to try to boost the economy by helping 53 local businesses get started, creating or retaining 1,422 jobs. ■



>> **BY THE NUMBERS**

Student demographics

12,683

Fall 2011-12 enrollment

11,594

Undergraduates

1,089

Graduates

435

Non-degree seeking

23

Average age of students

Where they're from:

92%

Florida

51%

Southwest Florida

31% from Lee County

16% from Collier County

3% from Charlotte County

3,675

Reside on campus
(Including West Lake Village)



3.35

Average GPA
for entering freshmen

1,530

Average SAT score
for entering freshmen

2.99

Average GPA for
current students

150

Student organizations

18

Fraternities and sororities

Community service

149,867

Hours served by students
July 1, 2010 - June 30, 2011

1,041,723

Hours served since 1997

Athletics

24

Sports clubs

14

Number of NCAA Division I teams competing in Atlantic Sun Conference and Coastal Collegiate Swimming Association

Research

\$14.7 million

Grants awarded in 2010-11

Nearly **\$150 million** since 1997

Campus

760

Acres

89

Completed buildings

15

Acres in solar field



Alumni

As of spring 2011:

13,473

- 35% live in Lee County
- 15% in Collier County
- 4% in Charlotte County
- 2.5% in Sarasota County
- 2.3% in Broward County



International partnerships

FGCU has formal exchange programs with universities in **China, France, Germany, Great Britain, Mexico, New Zealand and Sweden.**

Environmental stewardship

Academic Building 7, which houses science laboratories and classrooms for the College of Arts and Sciences, achieved platinum certification, the highest level awarded by the U.S. Green Building Council's Leadership in Energy and Environmental Design (LEED).

The university's 15-acre solar field supplies about 85 percent of the energy needed to operate Holmes and Lutgert halls as well as Academic Building 7, reducing FGCU's reliance on Florida Power & Light Co. by 18 percent.

An ice thermal storage plant sends chilled water through an underground loop that cools campus buildings, saving more than \$1.64 million over five years.

The three South Village residence halls get hot water from rooftop solar tanks.

Collings mineral collection to benefit art, geology students

Streaked with iridescent colors, shot through with sparkling metal or embedded with translucent tinted quartz, certain pieces in the Gilbert H. and Anne Collings Mineral Collection resemble futuristic set props from a “Star Trek” episode. Natural as they are, the specimens look as if they came from another planet.

The thousands of gems, minerals and rocks in the collection were donated to Florida Gulf Coast University by Anne Collings, whose family collected them during their travels over several decades. Some pieces are faceted, polished gems; others are uncut, in-the-rough deposits.

Fort Myers jewelry designer Mark Loren,



who appraised the collection, had never seen anything like it. Many of the minerals are no longer found in nature, he says.

“There’s a beautiful piece of binghamite that just looks like something from outer space,” he says. “It’s really unusual.”

Naturally occurring only near deposits of iron ore, binghamite is a type of agate stone layered with yellow, red and black that has become rare and eagerly sought by lapidarists.

Along with an array of donated gem-cutting and jewelry-making equipment, the collection is valued at more than \$163,000. Eventually, items in the collection may be used by selected art students to make jewelry while others are studied by geology students.

“Gil was really focused on the jewelry-making aspect of the stones,” says Mary Voytek, an



FGCU assistant art professor. “He had students who would come and make jewelry at his house.”

Loren described Collings as a Renaissance man, a successful surgeon with a passion for gems. In his travels, he found fluorescent minerals in Franklin County, N.C., opals in Australia and tanzanite in Africa.

“The breadth of the collection is stunning,” Loren says. “I’ve been

around rocks and gems for 30-odd years, and I had to call friends and ask ‘What the heck is this?’” ■

Left: A one-of-a-kind sugilite specimen from Africa, mounted on white onyx, has a market value of \$1,500. Above: The Collings Collection includes thousands of faceted gemstones such as topaz, tourmaline and citrine.

New scholarship fund to benefit music majors

Since Florida Gulf Coast University accepted its first class of music majors in fall 2006, the fast-growing program has been embraced by donors eager to nurture budding talent and to cultivate the community’s cultural offerings.

Through their generosity, several endowed scholarship funds have been established to enable and encourage young musicians and singers to pursue advanced studies in music and continue on the path to becoming tomorrow’s concert performers, ensemble conductors, composers and music teachers.

The FGCU Foundation’s ability to help students achieve these goals through financial aid was greatly enhanced this year by a \$500,000 deferred gift from a Fort Myers arts patron who wishes to remain



anonymous. Upon receipt of the gift, the university will seek the highest possible state matching grant.

A painter, former art teacher and musician, the donor established a fund that will generate competitive music scholarships in perpetuity, assisting music majors who demonstrate outstanding

musical skill and talent.

“You’ve got a good school there, with good teachers – I can tell from the sound of the music,” said the donor, who frequently attends concerts on campus. “I’d like to see it proliferate.”

Gifts such as these help ensure the future of the arts on campus and in the community at large.

With specialized curricula and extensive general education offerings, the Bower School of Music offers bachelor’s degrees in music performance and music education. The school is housed in a 23,000-square-foot, two-story building featuring an acoustically superior 196-seat recital hall.

For more information about supporting Bower School of Music scholarship funds, contact the foundation at (239) 590-1067. ■

NCEF gives at-risk youngsters an educational boost

The abilities to read and communicate are critical skills for learning and, ultimately, for succeeding in life. Research shows that children who have solid reading and language skills when they enter kindergarten are more likely to succeed and remain in school.

Assisting children in achieving those goals is the objective of the Early Literacy and Learning Model and Wings on Words Initiative. The Naples Children and Education Foundation supports these programs, which provide educational enrichment to more than 1,000 Collier County pre-kindergarten pupils who might be at risk because of language barriers or poverty.

The programs enable schools to equip classrooms with engaging materials and libraries for children and fund literacy coaches who work with pre-K teachers to develop lesson plans and student activities.

Funded by NCEF's \$350,000 gift, the program takes place in sites such as Redlands Christian Migrant Association, Guadalupe Center and several Head Start classrooms.

Assessment tests show that the program helps teachers more effectively teach these vital skills, with 95 percent of children who participate improving their English vocabulary skills.

"These programs are critically important, allowing more than 1,000 children to receive the help they need to succeed," says Steve Magiera, FGCU Foundation executive director. ■



"Meet the Kids Day" is an NCEF event where guests interact with children who have benefited from Naples Winter Wine Festival proceeds.

FineMark continues tradition of support for FGCU

FineMark National Bank & Trust has been supporting Florida Gulf Coast University since the Fort Myers-based financial institution opened its doors in 2007. In fact, President and CEO Joseph Catti had already been a longtime supporter of the university.

In the years since, FineMark has continued to back the FGCU Foundation's Founder's Cup Golf Tournament and the annual President's Celebration.

This year, the bank increased its support by making a \$100,000 commitment over five years that will result in the Lutgert Hall computer laboratory being named for FineMark. A portion of the gift went to support the 2011 President's Lecture Series



Catti

featuring Laura Bush; another allotment will fund grand sponsorship of the 2012 President's Celebration in March.

"On behalf of our shareholders, clients and everyone at FineMark National

Bank & Trust, we are pleased to support Florida Gulf Coast University and in particular, the Lutgert College of Business," says Catti. "In addition to the significant impact on education for people of all ages, FGCU has enhanced the cultural and economic environment of Southwest Florida.

The university continues to transform our community by providing a cadre of well-qualified graduates into the workforce, and FineMark is proud to play a part in its continued success."

Steve L. Magiera, FGCU Foundation executive director, praises FineMark's continuing commitment and generosity, noting that Catti served an unprecedented three-year term as chairperson of the foundation board of directors.

"The university has always been able to count on Mr. Catti and FineMark Bank for their unwavering support," Magiera says. "We are especially pleased that they have agreed to be the grand sponsor for the 2012 President's Celebration." ■

First Generation scholarships open doors to education

As a kindergarten teacher at Golden Gate Elementary School, Sara Ritchotte-Biszantz sees firsthand the impact of poverty. More than 94 percent of the school's students are deemed economically needy, according to Collier County Public Schools.

Ritchotte-Biszantz has walked in their shoes herself.

"I grew up in pretty much abject poverty," says the 2010 Florida Gulf Coast University graduate. "My kids and I were on public assistance. I want to be able to give them a little more, so their kids will never have to live in that kind of poverty. I'm trying to break the cycle of poverty. And that's what I'm trying to do at Golden Gate."

Ritchotte-Biszantz might not have had the opportunity to do that without help from FGCU's First Generation Matching Grant program. Established in 2006, the statewide program allows many students whose parents have not earned bachelor's degrees to overcome generations of under-education and low-wage potential. Funds may be applied to tuition, textbooks, housing or other expenses that might prevent them from achieving their educational goals.

For Ritchotte-Biszantz, the money meant she could pay for child care when it came time for her full-time, unpaid teaching internship. She was a single mother of two at the time but has since married.

"Without the scholarship, I could not have done it," she says.

Since its inception, the state-matched First Generation program has distributed

Between 2006 and 2010, donors contributed \$1,123,313 to FGCU's First Generation scholarships. The state match brought the total to \$2,246,626.



First Generation scholarship recipient Sara Ritchotte-Biszantz with her kindergarten students at Golden Gate Elementary School.

more than \$2.2 million to FGCU students, including \$382,250 to 424 out of 1,727 applicants in 2010-11. In all, 786 have graduated after receiving First Generation support.

Each year, the Legislature appropriates money for the program based on full-time student enrollment at each state university – it's one of the few matching-grant programs that has survived budget cuts. The university raises funds to match that amount. In 2010-11, donors contributed to FGCU \$191,125 to match the state allotment.

Research shows the grant money is well spent. According to a study by the National Center for Educational Statistics, 59 percent of high school graduates whose parents didn't go to college enrolled in some form of postsecondary education. That rate increases to 75 percent among those with at least one parent with some college experience and jumps to 93 percent among those who had a parent with at least a bachelor's degree.

"The First Generation scholarship program not only benefits deserving students who receive help in paying for college and changes the future for their families, it also expands the educated workforce available for businesses in this community," says Darlene McCloud, FGCU director of advancement.

Living proof of that is Luisanna Valenzuela, who graduated in 2010 with a biology degree. She now works as a microbiology analyst at Sanders Laboratories Inc. in Fort Myers.

First Generation funds helped her pay tuition, book fees and other expenses so she could be the first in her family to earn a degree.

"It took some of the stress off my shoulders so I could focus on school," she says. "It was so rewarding to graduate and see my mom and how proud she is and to set an example for my two younger siblings."

For information on how to give, contact the FGCU Foundation at (239) 590-1067. ■

An investment with limitless potential

Scholarships are the key to a successful life, not just for the recipients but also for their families and countless generations to come.

During the 2010-11 academic year, Florida Gulf Coast University awarded a total of \$1.52 million in scholarships to 1,012 students.

For many of those students, a college education would have been an impossible dream without the money that generous donors bestowed upon them.

Many scholarships come from endowed funds that continue in perpetuity. An endowment can be established with a minimum gift of \$10,000 that may be paid over time. The fund is carefully invested and proceeds from the endowment are awarded as scholarships each year. Contributors name the funds and determine the criteria for awarding them. The reasons scholarships are established are as varied as their selection criteria, but demonstrate that sponsors know their gifts make a difference.

“For so many students, the scholarships they are awarded are the lifelines to a better future,” says FGCU President Wilson G. Bradshaw. ■



Endowed scholarship funds established in 2010-11

Herbert D. and Carolyn E. Conant Scholarship Endowed Fund

The Alan G. and Sandra R. Kaplan Endowed Scholarship Fund

Marco Island Shell Club Scholarship Endowed Fund

The Ronald and Kathy Toll Scholarship Endowed Fund

The Sanibel Captiva Trust Company Business Scholarship Endowed Fund

The Davis Family Scholarship Endowed Fund

The Krishna and Suseela Botlagudur Endowed Scholarship Fund

Hospitality Financial and Technology Professionals: Florida Gulf Coast Chapter Scholarship Endowed Fund

Marilyn Bower Korest Music Therapy Scholarship Endowed Fund

Joyce Anne Vitelli Scholarship Fund

Ruth U. Tobe Competitive Music Scholarship Fund

Human Resources Department Scholarship Fund

G. Jeffrey Provol Scholarship Fund

Anonymous Scholarship Fund

Naples Press Club Scholarship Endowed Fund

Utilities Structure Inc. Scholarship Endowed Fund

Wilma M. Nason Scholarship Endowed Fund

RWA Scholarship - In Memory of James Anderson

Myra N. and Van Zandt Williams Jr. Scholarship Fund of the Princeton Area Community Foundation

Music lover's passion lives on through endowed fund

Joyce Anne Vitelli had a passion for music and for inspiring others to love it. She spent her early adulthood working as a music teacher and went on to volunteer for several music-focused organizations.

The Naples resident died in April 2006 at age 67. Raymond Vitelli, her husband of 42 years, donated \$300,000 to Florida Gulf Coast University to create the Joyce Anne Vitelli Scholarship Fund to honor her memory. The scholarship benefits students with exceptional musical talent



Vitelli

and financial need.

The university applied to the state for matching funds, bringing the gift's value to \$450,000.

Roland Forti, the first scholarship recipient, plans to become a music

educator. In a thank-you note to Raymond Vitelli, he wrote: “Music has always been my passion...I hope one day to inspire my

students in the way I have been inspired.”

Born in Hornell, N.Y., Joyce Anne Vitelli graduated from Canisteo Central School and Syracuse University. She played the violin, piano and taught music. She was a member of the Philharmonic League and Kappa Alpha Theta, which she joined in college and with which she maintained a lifelong affiliation. She enjoyed serving as chairwoman of the organization's scholarship committee. She also volunteered with the Naples Philharmonic Youth Orchestra. ■

Foundation Fellow establishes music therapy scholarship

Beyond sensory and intellectual enrichment, music holds the power to ease physical and emotional pain. Research shows music benefits individuals with autism, Alzheimer's and Parkinson's diseases as well as other neurological impairments. It helps combat depression, apprehension and fear and soothes the autonomic nervous system.

For all these reasons and more, Alan Korest of Naples established the Marilyn Bower Korest Music Therapy Scholarship Endowed Fund with a gift of \$100,000.

Proceeds will support degree-seeking



Korest

students majoring in music therapy. "Recognizing the extraordinary healing power of music, my late wife, Marilyn, and I established the Bower School of Music at Florida Gulf Coast University with the stipulation that a degreed program in music therapy be created there," Korest said. "Whether very young or very old, physically or

emotionally challenged, patients in the care of a talented music therapist find solace and feel connected. This program is answering a critical unmet need in our community, and I am honored to be part of bringing it to Southwest Florida."

"There is a need for music therapists to work both in institutional settings and private practice, and a degree offering in Southwest Florida can be predicted to attract great interest," said Robert Thayer, interim director of the Bower School of Music. "The fund's creation is another reflection of the vision, passion and generosity of the Korest family." ■

Love of music inspires piano scholarship

For Myra and Van Zandt Williams Jr., music and education are critical components of a full and happy life.

As a teenager, Myra Williams was already an accomplished pianist whose talent and hard work won her a piano solo with the Dallas Symphony Orchestra. After earning a doctoral degree in microbiology, she went on to become a successful pharmaceutical executive, but her love of music has continued throughout her life.

Her husband, Van Zandt Williams Jr., served for more than two decades as vice president of development for Princeton University, leading campaigns that raised more than \$1.8 billion. He, too, earned a doctoral degree.

Their passions for music and higher

education led them to establish a \$100,000 endowed scholarship fund for piano majors at Florida Gulf Coast University. With a state match, the gift's value rises to \$150,000.

The Myra N. and Van Zandt Williams, Jr. Scholarship Fund will provide scholarships to piano majors in FGCU's Bower School of Music.

The scholarship "is a crucial component in attracting the finest young pianists to the Bower School of Music," says Michael Baron, professor of music and head of the school's piano studies program.

In recognition of this gift, the donors' names will be displayed on a commemorative wall in the music education and performance building. ■



Myra and Van Zandt Williams

Successful engineer reaches out to aspiring students

Yugoslavian-born Jovan Zepcevski began his new life in America with a mere \$100 in his pocket.

But his belief in the American dream, combined with his determination and drive, eventually led him to found his own company, Zep Construction Inc., which he has operated in Fort Myers for close to three decades.

He realizes how vital a role his own education as an engineer played in allowing him to succeed in life and he's committed to helping others who aspire to follow in his footsteps.

He donated \$100,000 to create the Jovan Zepcevski Engineering Scholarship



Zepcevski

Endowed Fund. The Foundation has applied for state matching funds, making the gift's value \$150,000. It will be awarded to civil engineering majors in their junior or senior years who have a financial need and a GPA of at least 3.3.

It is the second such scholarship he has endowed at the university.

Previously, he also named the Zep Construction Suite on the first floor of

Holmes Hall, home to the U.A. Whitaker College of Engineering. This gift will be used to purchase scientific equipment for the college.

To date, the value of his gifts to FGCU's engineering program total more than \$750,000.

Susan Blanchard, founding director and dean of the College of Engineering, says the college is fortunate to have such a benefactor.

"Mr. Zepcevski provides an excellent example to students of how far one can go in spite of challenging beginnings and of how important it is to help others along the way," she says. ■

The Heritage Society

Established in 2005, The Heritage Society recognizes alumni and friends who have included Florida Gulf Coast University as a beneficiary in their estate plans through generally irrevocable deferred gifts such as charitable gift annuities, charitable remainder trusts, and retained life estates.

- ◆ Mr. and Mrs. Gray C. Ballman
- ◆ William* and Kathryn Beeken
- ◆ Richard and Sandy Bishop
- ◆ Dr. and Mrs. Amal K. Das
- ◆ Ruth L. Faith*
- ◆ George and Rebecca Fogg
- ◆ Marguerite and Guy Howard*
- ◆ Alan G. and Sandra R. Kaplan
- ◆ Thelma B. and Edwin M. Oulton*
- ◆ Anonymous

The Covenant Society

Established in 2005, The Covenant Society recognizes alumni and friends who have included Florida Gulf Coast University as a beneficiary in their estate plans through generally revocable deferred gifts such as wills, living trusts, life insurance policies, and qualified retirement accounts.

- ◆ Mr. and Mrs. Richard C. Ackert
- ◆ Joan and William Attridge
- ◆ Mr. Bedford H. and Dr. Fay R. Biles
- ◆ Steve Bostwick
- ◆ Jane S. Brenner
- ◆ Herbert D. and Carolyn E. Conant
- ◆ Dianna P. Durbin
- ◆ The Bill Eshbaugh Family
- ◆ George and Rebecca Fogg
- ◆ Mary K. Gallagher
- ◆ John and Dorothy Guigon
- ◆ Denise Heinemann, DrPH, RN
- ◆ Alan G. and Sandra R. Kaplan
- ◆ Martin* and Patricia Latter
- ◆ Dr. John R. and Mrs. Veora Little
- ◆ Elissa D. Manna
- ◆ Michael B. Peceri
- ◆ Harry W.* and Ruth M. Service
- ◆ Robert W. Shrader
- ◆ Dr. Jo Stecher

- ◆ Dr. E. J. Arpin-Sypert and Dr. George W. Sypert
- ◆ John and Constance* Temoyan
- ◆ Ruth U. Tobe
- ◆ Keith and Doris Trowbridge
- ◆ Herbert J.* and Barbara S. Wolfe
- ◆ Anonymous (15)

The Legacy Society

Established in 2005, The Legacy Society recognizes alumni and friends who have made estate distributions to Florida Gulf Coast University. These ultimate gifts have contributed to FGCU's ability to provide outstanding higher education and public service throughout Southwest Florida.

- ◆ Bernice J. Bongiorno*
- ◆ Lillian and Clay Clukies*
- ◆ Elizabeth A. and Jack A. Conner*
- ◆ Marian E. Davis*
- ◆ Dr. Edith Potter Deats*
- ◆ Robert L. DuGene*
- ◆ Evelyn L. Egan*
- ◆ Ruth L. Faith*
- ◆ Marguerite and Guy Howard*
- ◆ Mary V. Hull*
- ◆ Pop and Marj Kelly*
- ◆ Mabel and Arnold Keys*
- ◆ Edward T. and Esther W. Kuss*
- ◆ Donald and Elizabeth Manchester*
- ◆ Wilma M. Nason*
- ◆ Helen E. Nestor*
- ◆ James D. and Eleanor F. Newton*
- ◆ Thelma B. and Edwin M. Oulton*
- ◆ Marlin F. and Alice M. Perry*
- ◆ Mary I. Peterson*
- ◆ Frances V. Riley*
- ◆ Frances B. Setterblade*
- ◆ Richard W. and Esther A. Shaughnessy*
- ◆ Hans and Erna Siebert*
- ◆ Grace J. Sneckenberger*
- ◆ C. Gilbert and Emma Spies*
- ◆ Richard W. Steves*
- ◆ Alex and Patience Stom*
- ◆ Mary B. Ullman*
- ◆ George C. Van Rhee*
- ◆ Mrs. Idell Walkoe*
- ◆ Anonymous

* Deceased



Gifts come in all shapes and sizes

Potential donors will find that there is a gift to fit every goal.

Deferred gifts help provide for higher education today and for future generations. Revocable gifts, such as living trusts, bequests and life insurance, provide donors with flexibility in estate planning, while irrevocable gifts, such as charitable gift annuities and charitable remainder trusts, provide donors with income for life and tax advantages.

Here are some ways in which donors may make a gift:

Bequest: Allows donors to provide for the family after death and to distribute assets according to the donors' wishes while saving on estate taxes by naming FGCU a beneficiary in their wills.

Living trust: The donor or a beneficiary receives income from the trust's assets. The donor decides who will receive the trust remainder and trust assets bypass probate, so the terms are private and assets in the trust are removed from the probate estate so estate expenses may be lower. The donor remains in control of the trust throughout his or her lifetime.

Charitable remainder annuity trust: Donors receive a fixed income and realize an immediate charitable deduction and avoidance of capital gains taxes on appreciated assets used to fund the trust.

Charitable gift annuity: Provides lifetime payments for the donor and possibly another person, a charitable deduction for a portion of the gift's value and various tax savings.

There are many ways in which to make a meaningful gift while ensuring your family's financial well-being. For more information, contact Peter Lefferts, FGCU director of planned giving, at (239) 590-1077. ■



Herbert and Carolyn Conant

Estate gifts last more than a lifetime

During the almost two decades during which they have lived in Cape Coral, Herbert and Carolyn Conant have watched Florida Gulf Coast University rise from the ground and flourish.

The Conants are committed to serving the community in which they live and have a passion for education in particular.

Their desire to make a difference resulted in their decision to create a generous deferred gift for FGCU, which will exist in perpetuity.

“We love universities and think they’re very important,” says Carolyn Conant, who worked in university administration early in her professional life. “We’ve watched FGCU grow and found what has been done to date very impressive.”

The Herbert D. and Carolyn E. Conant

Scholarship Endowed Fund will be funded through their estate gift and will be used to award scholarships to students majoring in engineering or science who have grade point averages of 3.5 or higher and demonstrate outstanding leadership in school or volunteer activities. Both of the Conants believe that engineering and science are very important to the country’s welfare.

They created the estate gift, Herbert Conant says, because “we wanted to ensure that we can live our current lifestyle until the end of our lives.”

Estate gifts allow donors to ensure their own financial security and that of their families while also providing a gift that lasts in perpetuity.

Herbert Conant served in the Marines, earned a degree in mechanical engineering

and went to work for The Turner Corporation, a Fortune 500 firm based in New York City. He eventually became the company’s CEO and Chairman of the Board.

“The Conants’ generosity will make a difference in the lives of students and their families for generations to come,” says Steve Magiera, FGCU Foundation executive director. “The university deeply appreciates such gifts.”

Estate gifts not only provide opportunities for recipients of the scholarships they fund, they also create lasting tributes to the donors, their vision and generosity.

In addition to endowed scholarship funds, donors may choose to establish endowed faculty chairs or help to expand programs that are important to them. ■

President's Society fills financial gaps

With the costs of living and learning rising and sources of financial assistance dwindling, it's more important than ever for Florida Gulf Coast University to be able to step in when unbudgeted needs arise.

That's the thinking of President's Society members like Cornelius "Pat" Cacho of Naples. A retired World Bank economic management specialist and longtime advocate for education, Cacho is a lifetime member of the society, which supports discretionary spending requests that arise during the academic year.

"It's good for the people running the university to have funds they can tap from

Cornelius "Pat" Cacho

time to time if something comes up that they hadn't planned for," Cacho says. "That's why I thought it would be good to make my contribution to the President's Society. It's more difficult now than ever, particularly for disadvantaged students, to find jobs while going to school. Things like Pell Grants have been cut down. Anything we can do to help them is good for them and for society."

The first in his family to attend college, Cacho earned honors bachelor and master's degrees in economics from the London School of Economics and Political Science at the University of London. In 2006, the longtime FGCU Foundation board member established the Pat & Laura Cacho Family Endowment at FGCU to benefit Collier County African-American students affiliated with the College Reach-Out Program. He has also supported the First Generation Matching Grants program for disadvantaged students whose parents did not earn college degrees.

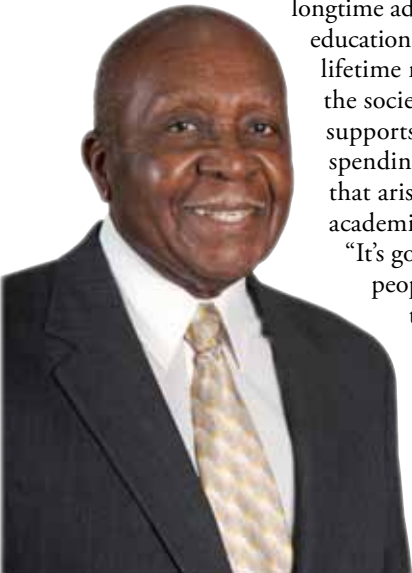
"I know how useful it is and want it for as many other people as possible," he says. Making college and campus life easier to

manage for students, the President's Society funds requests such as hardship assistance, travel expenses for conferences and bereavement needs. This year, an allocation enhanced the orientation program for freshmen. Many other university programs have benefited over the years, including the FGCU Invitational Mathematics Competition for local high school students, the Dominican Republic Service Learning Project and First Generation scholarships.

The university's premier annual giving association, the President's Society boasts 120 members. Annual members donate unrestricted gifts of \$1,000 to \$24,999; life members give \$25,000 or more. Each year, members enjoy several important university events, including the president's celebratory brunch in their honor.

"Gifts made to the university by members of the President's Society are a wise investment in the lives of our students," says President Wilson G. Bradshaw.

For information on becoming a member, contact the FGCU Foundation at (239) 590-1067. ■



The President's Society

Dick and Sue Ackert
Sarah Jane and John R. Alexander
Audrea Anderson*
Mr. and Mrs. Gray C. Ballman
Nancy and Edward Barr
BB&T - Oswald Trippe and Company
Kathryn I. Beeken*
Mr. and Mrs. Gary E. Bickel*
Bedford H. Biles, J.D. and Fay R. Biles, Ph.D.
Jack and Shelley Blais*
Patty and Jim Borden
Rick and Lori Borman
John D. and Barbara A. Bowlin
Dr. Wilson and Jo Anna Bradshaw*
Cornelius (Pat) Cacho*
Tom and Lynda Case*
JoAnn and Joseph Catti*
Brian and Denise Cobb*
College of Life Foundation
Barron Collier III
Dean C. Colson
Bernese Davis
Desanzo Charitable Foundation
Cathy Doyle
Cathy J. Duff
Mr. and Mrs. Charles B. Edwards*
George and Rebecca Fogg
James N. and Mary N. Fox
Roberto and Renee Garcia

Jennifer Goen
Eva Sugden Gomez*
Pete and Amy Gravina
Peg and Scott Gray-Vickrey
Dr. Marci Greene
The Gricenko Family
Mr. and Mrs. John V. Guigon
Ann Howard Hamilton
The Hanno Family*
Al and Sally Hanser
Larry and Mary Hart
Dr. and Mrs. Lowell L. Hart*
Hayward Baker Inc.
Mr. and Mrs. Robert L. Heidrick
Henderson, Franklin, Starnes & Holt, P.A.
Dr. Donna and Mr. Allen Henry
Drs. G. Burt and Ruth W. Holmes*
Mr. and Mrs. Charles K. Idelson*
Terry Igo
Ann R. Jacobson
Glen and LaVonne Johnson*
Lewis Johnson
Rick and Catherine Johnson
Skip and Mary Ellen Johnston*
Paul and Susan Jones
Ken and Mary Kavanagh
Nick Kellen
Chuck and Helen Ketterman
James F. and Lynn E. Knupp*
Alan Korest*
Barbara Krell

Mr. and Mrs. W. J. Larson
Marc and Lise Laviolette
Vee H. Leonard
Chip and Sheryl Lesch
W. Bernard and Elaine P. Lester
The Lightner Trusts
Laird A. and Laurie D. Lile
Linda and David Lucas*
Helen L. Mamarchev
Manhattan Kraft Construction, Inc.
Mr. and Mrs. Vito Manone*
Duncan C. McBride
Dr. and Mrs. Stephen S. McIntosh*
Roy and Beverly McTarnaghan*
Dr. William C. Merwin*
Jill and Steve Miller
Kathleen F. Miller, Ed.D.
K. Mark Mottolose
Karen and Jim Nathan
Pamela Noland*
Dr. Richard Pegnetter
CarolAnn Popovich
Dave and Arlene Powell
G. Jeffrey Provol
Publix Super Markets Charities, Inc.
Drs. J. Robert and Diana J. Quatroche
Mr. and Mrs. Thomas J. Rice
Richter Leadership Fund
Dr. and Mrs. Thomas J. Roberts
Robbie Roepstorff
Drs. Hudson and Elsa Rogers

Dr. J. Michael Rollo and Ms. Amy S. Rollo
Marjorie M. Rubacky
Klaus and Mary Ann Saegebarth
Ken Schexnayder and Ellen Atkins
Richard and Maureen Schulze
Dr. Joe and Marcela Shepard
Bob Shrader
Dr. Peter and Mary Kay Sidell
Carol Slade
The Joan K. Slocum Foundation
William and Joan Slocum*
Dr. and Mrs. Paul Snyder
Juliet C. Sproul*
Kenneth and Halcyon St. Hill
Steinway Piano Society
Robin and Pat Stranahan*
Margaret and Peter Sulick*
Dr. and Mrs. Ronald B. Toll
Drs. S. Gregory Tolley and Rebecca Totaro
Dolph and Sharon von Arx*
J. L. Wallace, Inc.
The Val Ward Family*
Allen and Marla Weiss
Beth and Jeff Wessel
Jaynie and Stan Whitcomb*
Marian and Gary Whitehouse
Charles and Melanie Winton*
Jim and Sasha Wohlpart
Michele and Richard Yovanovich

*Life member

Special events build vital funds and friends

Raising money and building support for the university are primary missions of the Florida Gulf Coast University Foundation. Among the annual events staged by the Foundation are the following:

1. President's Lecture Series: Former First Lady Laura W. Bush appeared at Florida Gulf Coast University in April as the keynote speaker for the event's debut. During her talk at Alico Arena, she shared memories from her years in the White House and the aftermath of the terrorist attack on Sept. 11, 2001, as well as the importance of health care and education for women throughout the world. The series is planned as a signature event that will bring compelling speakers with meaningful messages to the region. It builds upon the previous University Lecture Series, which featured Maya Angelou, Mikhail Gorbachev and Gen. Colin Powell.

2. President's Gala: More than 400 people attended the black-tie President's Celebration 2011, which took place Jan. 15 at The Ritz-Carlton, Naples. The annual gala raised \$745,000 through ticket sales, donations, live and silent auctions. Funds raised through the gala go toward meeting the growing demand for student aid, providing deserving students with the backing they need to become self-sufficient, successful members of society.

3. President's Scholarship Luncheon: Donors and the recipients of their generosity have the chance to get acquainted over a meal at the President's Scholarship Luncheon. Almost 600 people attended the 12th annual event, held

Dec. 3, 2010. In all, about 1,000 students received \$1.52 million in scholarships this year. Scholarship recipients spoke to the gathering, expressing their appreciation for the donors and the opportunities their gifts have made possible.

4. Founder's Cup: The 19th annual Founder's Cup golf tournament, held Oct. 15, 2010, at Grey Oaks Country Club, raised \$64,000. President Wilson G. Bradshaw says generous community participation in this event is invaluable to the university and its students. "The money raised enhances scientific, educational and charitable programs related to the mission of the university, outside the scope of regular state funding." ■



Student-athletes rise to new level

Florida Gulf Coast University's athletics program has reached a major turning point.

Following four transitional years in NCAA Division I competition, the 14 teams now are full-fledged members, eligible for post-season play.

The athletics department has cranked up the momentum, recruiting top high-school athletes, hiring more assistant coaches and increasing season-ticket sales. The department has set its sights on winning at least four Atlantic Sun Conference championships and advancing four squads to the NCAA Tournament in 2011-12. The target isn't out of reach considering that women's soccer, women's swimming and diving, men's soccer and women's basketball won regular-season conference titles in 2010-11.

FGCU's student-athletes strive for success not just on the scoreboards but also in the classroom and in the community.

Since FGCU introduced athletics in fall 2000, academics have remained a top priority. High-performing students are celebrated each spring at the Athletic Academic Honors Luncheon.

In the spring 2011 term, 44 FGCU student-athletes and cheerleaders were honored for maintaining a minimum 3.5 cumulative grade point average for at least two semesters. Overall, 11 Eagle athletes posted 4.0 semester GPAs in the fall, and 163 of 266 total student-athletes (61 percent) earned spots on the Athletic Director's Honor Roll for earning a minimum of 3.0.

Cumulatively, the university's student-athletes have attained a 3.15 GPA, exceeding that of the overall student body.

"We are extremely proud of the continued, collective outstanding academic performances of our student-athletes," says FGCU Director of Athletics Ken Kavanagh. "In particular, I want to commend those who achieved the tremendous distinction of recording a 4.0 GPA."

Committed to recognizing and encouraging scholar-athletes, the Hillmyer-Tremont Student-Athlete Foundation has supported the sports program since its inception with an endowed scholarship fund and an annual scholarship gift.

Estero Bay Chevrolet also sustains its



Women's soccer, swimming and diving, basketball and men's soccer teams won regular-season conference titles in 2010-11.

commitment, providing courtesy vehicles driven by FGCU athletics staff.

"Athletics is fortunate to have the support and friendship of FGCU Foundation board member Charles Winton and Pat Denson, owners of Estero Bay Chevrolet," says Stanley Perchan, director of Athletic Advancement. "Charles and Pat also lease an Alico Arena skybox for home basketball games and often allow friends of FGCU Athletics access to the box."

Additional support is provided by Miromar Lakes Beach & Golf Club, which sponsors "Golfing with the Greats." The celebrity event is part of the "Night at the



Nest" gala, the largest fundraising effort of the Eagles Club, a booster organization that awards scholarships and supports the general athletics fund. Because the state does not fund intercollegiate athletics, the club's support is vital to a thriving sports program.

As Southwest Florida rallies around FGCU's teams, turning out in ever-increasing numbers for home events, players and staff continue to reach out and give back to the community. Student-athletes completed 3,898 hours of community service in 2010-11, helping build homes for Habitat for Humanity and visiting patients at the Children's Hospital of Southwest Florida among other activities.

Meanwhile, former student-athletes continue to make their names and garner recognition of FGCU in the worlds of professional sports. They are: Chris Sale, who pitches for the Chicago White Sox; Casey Coleman, who pitches for the Chicago Cubs; golfer Derek Lamely, who competes on the PGA circuit; and Brooke Youngquist Sweat, who plays on the AVP beach volleyball tour.

For more information about supporting the athletics program, call (239) 590-7030. ■

>> ALUMNI ASSOCIATION



Graduates stay connected through Alumni Association

Kevin Gaffney ('01, Accounting) and his wife, Amy ('02, Elementary Education master's), feel strongly about maintaining their connections with their alma mater. Both lifetime members of the Alumni Association, they regularly turn out for the annual Dollars for Scholars bowling tournament, where the accounting firm he established in Naples has sponsored a lane for the past three years. They enjoy alumni nights at various sporting events and buy season tickets for men's basketball.

"It's important for my wife and me because we really enjoyed our time at FGCU, and we really like being part of something like the Alumni Association from the ground up," Gaffney says. "It's nice going to the different events and knowing people and not being just a number, as at bigger universities. Alumni should join to stay in touch with former classmates and local business connections."

Dollars for Scholars, Alumni Weekend, the annual Grad Bash – these are just a few of the fun activities the Alumni Association organizes to help keep FGCU's 13,000-and-counting graduates connected once they have left "the nest." E-newsletters, Pinnacle magazine (www.fgcupinnacle.com)



Touchette

Left: Alumni, students, faculty and staff kicked off Sustainability Week with a beach cleanup last year. **Right:** Having fun at this year's annual Dollars for FGCU Scholars fundraiser, which benefits student scholarships at the university.

and social networks such as Facebook and LinkedIn also keep Eagle alums in the loop.

"There are so many ways to stay involved with the university after graduation," says Lindsey Touchette, director of alumni relations. "Graduates can take advantage of many benefits and, in turn, make a positive impact on FGCU."

Alumni can attend seminars and networking programs that may help them advance professionally and socially. They can also take part in scholarship fundraisers, community service projects and career workshops made possible through the efforts of alumni and other volunteers.

The Alumni Association is the thread that helps keep those ties strong and meaningful.

"We encourage FGCU graduates to get involved with the Alumni Association to contribute their expertise and experience, invest in programs and initiatives that support the FGCU mission, gain assistance with their career paths and build their professional network with fellow Eagle alumni and the local community," says



Hodge

Angela Hodge ('04, Communication), the association's 2011-12 president.

For more information, visit www.fgcu.edu/alumni. ■

The FGCU Alumni Association board of directors and staff thank the members and contributors for their support.

1998

Paul Allen**
Gerard Carrington**
Jeffrey Lavelle

1999

Cynthia Bennett**
Connie Brown
Kimberly (Trombly) Cambareri
Donna Chapman
Robert Fay**
Tracy (Shonak) Fisher
Laurie Flohr
Leonard Flohr
Judy Knizner
Gary Kluckhuhn
Lorraine (Tortorella) McCann
Jennifer (Jordan) McGurk
Tara (Applegate) Olson
Gary Page**
James Robinson II**
Amy (Esolen) Summers**
David White
Jesslin Williams

2000

Rebecca (Barber) Antonucci
Lenore Benefield**
Jeffrey Berry**
Carlos Cavenago III
Jennifer (Parker) Cavenago
Deber Harris
Laura (Timmers) Holquist**
Lee LeBlanc
Penny (Mercer) Mourer**
Kimberly Philbin**
Jacob Scott
Esther Spink**
Patsy (Saffran) Valentine**
David Vazquez

2001

Nancy Banker
Mary Banks**
Janet Borchers
Susan Byars**
Mary Ann Elder
Tibor Elder
Jacquelyn Fresenius
Jan (Rogers) Frick
Steven Fusco
Kevin Gaffney**
Carolynne Gischel
Kerry Griffin, Jr.
Scott Lundy
Ronna Miranda
Robert Mulhere**
Sharon Jenkins-Owen**

Laura (McLean) Phillips
Mark Rusnak
Lydia Lowell-Sherman
Margaret Stockhus
J. Rodney Watson
Allen Weiss, M.D.**

2002

Robert Banker
Isaac Brundage
Orv Curry
Victoria (Heroux) Danton**
Deborah (Rhodes) Elias
Amy (Estes) Gaffney**
Molly (Keirnes) Grubbs
F. Elizabeth (McClanahan)
Hanlon
Brandon Johnson
Louetta (Holst) Muller
Andrew Kunkle**
Jennifer (Faramo)
Laderer**
Karen Landy, M.S.
Richard Laviolette
Jennifer (Zuck) Smith
Rita Volk
Rachel (Reek) Zucchi

2003

Rebecca Ali
Judith Baker
Yvette (Taylor) Taylor
Benson
Douglas Bladich
Jennifer Crabill**
Brent Evans**
Thomas Gardner
Jacqueline Gregory
Heidi Franz-Hoyt**
Eugene Hoyt**
Lisa (Beasley) Illum
John Little**
Garry Long**
Shirley (Bishop) Mann**
Jason McMillan
Barbara Miller
Brad Phelps**
Gary Schwartz
Marcela Shepard
Omar Villarreal
Shad White**

2004

Jennifer Alvarez**
Julie (Sonntag) Barkley**
Catherine Burke
Christopher Carroll
Avrille (Stanley) Davis
Pamela (O'Rourke) Debus
Suzanne Decopain**
David Donahue
Jeanne (LaCost) Ezcurra
Andrew French
Amber Greco**
Timothy Gulley
Rebecca (Yost)
Hollingshead
Angela Hodge**
Michael King
John Kollar**
Reid Lennertz

Tiziana (Gandolfo)
Marchante
Victoria McConnell**
Andrew Miller**
Patrick Mark Mahony**
Lauren (Sperber) Mills**
Krystal Nimsgen**
Tracy (Abel) Pelletier
Virginia Pena
David Quinn
Christine Scoone
Marc Tougas
Diane Wakeman
Scot Wilson
Ruth (Shiding) Worman

2005

Christina Adams
David Anderson, Jr.**
Harry Casimir**
Annette Castillo
Juan Ceden
Kenneth Costello
David Cox
V. Jo Crandall
Marc Devisse**
Darryl Fales
Melissa Felice**
Amanda Fortuna
Ryan Frost**
Vincenzo Gambo
Ossie Hamrick
Elizabeth Hill
Brandon Hollingshead
Michelle Jordan
Lynn Lee**
Heather (Steiss) Land
Leonard Maciejewski
David Meyers, Jr.
Stevan Morales
Leonard Moore**
Catherine (Place)
Mummert
Judith Nothdurft
Karen Phillips
Patricia Ruble**
Deanna Saracki**
Karie Seiberger
Maria Sotomayor
Pamela St. Laurent
Victor Tejera**
Lindsey (Brower)
Touchette**
Nathan Touchette**
Melissa White**
Brian Zamorski**

2006

Laura Ahern
Linda Alfaro
Allison Allie**
Brittany (Cobb) Carson
Esther (Toussaint)
Casimir**
Guy Cicinelli
Ashley (Jones) Cox
Jennifer Crawford
Brian Creel
Sarah Deville
Dianne Faramo
Lisa Flugger
Jason Garcia

Daniel Hibshman
Holly Kilgus
Douglas Kollmer
Jill Isaacson
Samantha Manning
Gina Manville
Megan (MacDonald)
Miller**
Kain Mills**
Trevor Montgomery
Frank Preve
Julie Rose
Melissa (Cameron)
Shiple
Debra Sirois**
Margaret Sullivan
Jonathan Ziemba

2007

Javed Ali
Elisa Araujo
Angela (Meadows) Baca
Brittany (Partridge) Bauer
Sharon (Zahav) Brophy
Chrysten Burzio
Megan Calamaro
Joshua Campbell
Timothy Clark
Andrew Coogan
Kagen Cooksley
Cassady Curtin**
Kenneth Czwojdak
Bernard Davis II**
Dena Ewing
Adam Francis**
Pamela Forsyth
Ryan Hopkins
Nicole Ingelido
Locksley Knibbs
Peter Lechler**
Jerry Ma
Margaret (Fahey)
McCoullough
Colleen Meyers
Baldwin Miranda
Alissa Perper
Melissa Richards
Mareille Rolon
Roberto Lopez Rosado
Blake Scates
Elizabeth Smith
Vanessa (Covington)
Smith
Larry Southard
Clara Trei

Hallie Visaggio
Charles Weaver**
Sasha Wohlpart
Kimberly Zambito
Cara Zasoba**

2008

Sarah Ardellini
Christina Barzelay
Beau Bauer
Angela (Rosado) Bell**
Derek Burr
Joseph Calamaro
Michael Casanova
Jennifer Crawford
Melissa (Crews) Faasse
Charles Faramo
Jonathan Forbes
Jonel (Archard) Gomez**
Claudia Guanes
Linda Guerrine**
Madeline Holzem
Rhonda Holtzclaw
Stefanie Ink**
Tabitha-Rae Isham
Bethany Jameson**
Ryan Kowadla
Brenna Abbott-
Marzucco**
Judson McCormick
John McNamara
Bryan Mooney
Eric Nolen
Bradley Piepenbrink
William Pitt
Richard Ramos
Charles Reed III
Mary Reed
Nicole Schmitt
Jessica Seelky
Heather Tharpe
Erica Turok**
Lori (Weaver) Votapek
Aubrey Williams
Michelle (Frye) Williams
Lauren (Wolfe) Willison
Timothy Wilson
Jessica Zabel

2009

Behzad Afshar-Nasari
Alison Anderson**
Willie Baca
Regina Bale
Mark Bigelow

Deborah Bryan
Nathan Campbell
Laura Cannizzaro**
Rachel Carden
Kristina Caruso
Andrew Coppens
Victoria Cottam
Brittney (Calabrese)
Cottrell
Andrew Coy
Angela Curkovic
Deborah Curtis
Gina Dyen-Shapiro
Christina Faramo
Amanda Graham
Rebecca Heins
Timothy Hogan
Krystle James
Emily Johnson**
Michael Julius**
Leslie Liebermann
Jacklin Marshall
Robert McClean
Deborah McEwan**
Victoria Mendez
Carmen Miletto
Edward Morton
Florence Nogaj
Jessica Pasternack
M. Kelley Reyff
Patricia Rice
Dawne Rowe
Jessica Rouse
Lori Shepard
Richard Van Fleet
Joseph Voelmle**
Adam Whitelaw
Kimberly Williams**

2010

Robert Baggett
Marissa Barron
John Bello III
Jacqueline Blumert
Raymond Budd
Kurt Busch
Tyler Clauson
Tremayn Christopher
Taylor Cooke
Theresa Cunningham
Chelsea Dermeyer
Rebecca (Raciappa)
Donaway
Bianca Engle**
Erica Faramo

Carey Fells
Ashley Ferraro**
Evan Flechsig**
Brian Ford**
Holly Gerber**
Mary Hodges
Irwin Kellen
Leslie King**
Daniella Kleker
Shawna Kumbat
Nathan Leichter
Laura Lundberg**
Elizabeth McMasters
Laureen Meyer**
Michael Nacheff**
Heather Niemczyk
Elizabeth (Romero)
Bernardez) Newhouse
Daniel Novak
Kyle Parker
Patricia Pasden**
Julie Pisari**
Catherine Rodi
Michelle Rura
Jeffrey Shafer
Brian Taylor
Edward Tucker
Johnathan Tucker**
Deniece Vella
Mathew Visaggio
Anna Winkle**
Yi Xuan Xing**
Anne Young

2011

Audrey Campbell
Clark Cary
Mason Clark
Abbe Close**
Jacqueline Cox
Gonzalo De Villa**
Elizabeth Dunn**
Maryann Egan
Michael Eovino**
Ashley Falis**
Taylor Ferguson
Jennifer Flowers
Matthew Fuhs**
Jessica Fuoss**
Desiree Gonzalez
Pierre Grilo**
Jeanna Hepp**
Tracy Hoogervorst
Zachary Knispel**
Kyle Matera
Jennifer (Bibb) McMillan
Devin Merriman**
Jennifer Miseswicz
Megan Murphy**
Charles Nothdurft
Gioconda Orbe
Amber Pacheco**
Michael Paz
Kimberly (Legendre)
Petroske**
Melissa Pinnow**
Donald Routh**
Michael Shows II**
Eliane Smith
Felicia Walker**
Dustin Weeks**

**Lifetime member



Celebrating graduation at Alumni Association's Grad Bash, April 2011

FLORIDA GULF COAST UNIVERSITY FOUNDATION INC.

BALANCE SHEET / JUNE 30, 2011

ASSETS

CURRENT ASSETS

Cash and cash equivalents.....	\$10,915,729
Interest receivable.....	208
Accounts receivable	5,535
Pledges receivable, current	98,000

Total current assets.....\$11,019,472

NONCURRENT ASSETS

Investments	\$290,454
Restricted investments.....	55,342,535
Pledges receivable	65,400
Royalties receivable	1,169,525
Loans receivable	5,000,000
Deferred outflow.....	40,241
Land holdings	4,551,500
Capital assets, net.....	32,204

Total noncurrent assets66,491,859

Total assets\$77,511,331

LIABILITIES AND NET ASSETS

CURRENT LIABILITIES

Accounts payable	\$95,326
Unearned rent revenue	24,000
Gift annuities payable, current portion	17,210

Total current liabilities.....\$136,536

NONCURRENT LIABILITIES

Loans payable.....	\$7,000,000
Gift annuities payable.....	194,695
Interest rate swap.....	40,241

Total noncurrent liabilities7,234,936

Total liabilities\$7,371,472

NET ASSETS

Invested in capital assets	\$32,204
Restricted	
Expendable	15,026,729
Nonexpendable endowment.....	50,167,850
Unrestricted	4,913,076

Total net assets.....70,139,859

Total liabilities and net assets ..\$77,511,331

SCHEDULE OF REVENUES, EXPENSES AND CHANGES IN NET ASSETS

For the year ended June 30, 2011

OPERATING REVENUES

Contribution.....	\$4,795,649
Rental income and other.....	1,456,962
Total operating revenue	\$6,252,611

OPERATING EXPENSES

Program services:	
Program fees	\$3,926,458
Scholarships.....	1,329,989
University support.....	1,237,394
General/administrative expenses	1,184,467
	\$7,678,308

Other expenses:	
Interest	\$195,225
Depreciation	7,307
	202,532

Total operating expenses	7,880,840
Operating loss.....	(\$1,628,229)

NONOPERATING REVENUES

Interest earnings.....	\$229,142
Gain on asset trade-in	6,471
Net appreciation in investments	9,049,976

Total nonoperating revenues	9,285,589
Income before capital additions.....	\$7,657,360

CAPITAL ADDITIONS

Contributions to endowments	\$4,009,917
Total capital additions	4,009,917
Increase in net assets	11,667,277

Net assets, beginning of year.....	58,472,582
Net assets, end of year	\$70,139,859

SCHOLARSHIPS ISSUED BY THE FOUNDATION OVER THE PAST FIVE YEARS:

2006-07	\$963,020
2007-08	\$1,388,719
2008-09	\$1,500,842
2009-10	\$1,581,314
2010-11	\$1,521,114

Fiscal year

In millions

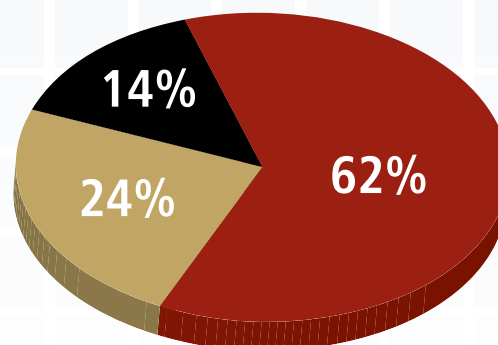
THE ENDOWMENT OVER THE PAST FIVE YEARS:

2006-07	\$39,330,726
2007-08	\$46,499,251
2008-09	\$38,469,654
2009-10	\$44,984,515
2010-11	\$56,673,447

Fiscal year

In millions

BREAKDOWN OF THE ENDOWMENT FUND:



■ SCHOLARSHIPS ■ PROFESSORSHIPS ■ PROGRAMS

>> ENDOWED FUNDS

Endowed funds are established with a gift of \$10,000 or more. Endowed funds carry on in perpetuity, generating income for scholarships or programs.

Eminent scholar chair funds

- ◆ Alico Corporation Chair in Financial Management & Planning
- ◆ Alico Corporation Chair in Market Development & Analysis
- ◆ Alico Corporation Chair in Operations Management & Strategy
- ◆ Backe Chair in Renewable Energy
- ◆ Bernese B. and Sidney R. Davis Chair for Environmental Design and/or Management
- ◆ Moorings Park Chair in Managerial Accounting
- ◆ Southwest Florida Endowed Chair of Nursing
- ◆ Juliet C. Sproul Chair for Southwest Florida Habitat Restoration and Management
- ◆ Uncommon Friends Chair of Ethics
- ◆ Whitaker Eminent Scholar Chair in Science

Professorship funds

- ◆ BB&T Distinguished Professorship in Free Enterprise
- ◆ The Elizabeth A. and Jack A. Conner Professorship of Nursing
- ◆ The Elizabeth A. and Jack A. Conner Professorship on World Affairs
- ◆ The Dr. Edith Potter Deats Professorship in Nursing
- ◆ The Marguerite and Guy Howard Fund for Excellence
- ◆ The W. Thomas Howard Endowed Professorship in Business

Program funds

- ◆ Art Gallery Fund
- ◆ ASQ Aviation, Space & Defense Quality Endowed Fund
- ◆ Susan and Donald Blanchard Engineering Endowed Fund
- ◆ Bower School of Music Endowment
- ◆ Mrs. Bunny Foundation Library Purchase Fund
- ◆ Center for Judaic, Holocaust, and Human Rights Fund
- ◆ John C. Dacey Award for Endeavor Endowed Program Fund
- ◆ Daitch Family Summer Research Opportunity Fund
- ◆ Embassy Suites Fort Myers/Estero Resort & Hospitality Management Program Fund
- ◆ Environmental Education and Outreach Program Endowed Fund
- ◆ The Florida Institute of Certified Public Accountants, Southwest Florida Chapter Accounting Endowed Program Fund
- ◆ Gabor Employee Recognition Program Fund
- ◆ Honors Program Endowed Fund

- ◆ Dr. Erich Liebert World Affairs Program Endowment Fund
- ◆ Linda and David Lucas Institute for Master Planned Community Development and Finance Fund
- ◆ Lutgert College of Business Fund for Educational Excellence
- ◆ Lutgert Companies Endowed Fund
- ◆ Northern Trust Endowed Fund
- ◆ Fingers O'Bannon Fund
- ◆ U. A. Whitaker College of Engineering Excellence in Education Award Endowed Fund
- ◆ Val Ward Family College of Business Endowed Fund

Scholarship funds

- ◆ Abernathy Port Charlotte Kiwanis Foundation, in honor of John F. Abernathy, Endowed Scholarship Fund
- ◆ Ben Adams Scholarship Fund
- ◆ Advancement Trust Fund
- ◆ Ajax Building Corporation Scholarship Endowed Fund
- ◆ Alico, Inc. Endowed Scholarship Fund
- ◆ The FGCU Alumni Association Scholarship Fund
- ◆ Jack Amar Memorial Scholarship Endowed Fund
- ◆ American Association of University Women Endowed Scholarship Fund
- ◆ Judge Isaac and Audrea Anderson Scholarship Endowed Fund
- ◆ Anonymous Scholarship Fund
- ◆ Joan and William Attridge Endowed Scholarship Fund
- ◆ Balfour Beatty Construction, LLC Endowed Scholarship Fund
- ◆ Gray and Mercedes Ballman Engineering Scholarship Fund
- ◆ Bank of America Endowed Scholarship Fund
- ◆ Bank of America Florida's Community Scholars Program Fund
- ◆ Corporal Alfredo Baños Scholarship Fund
- ◆ BB&T Endowed Scholarship Fund
- ◆ William and Kathryn Beeken Scholarship Fund
- ◆ Cynthia A. Bennett Scholarship Endowed Fund
- ◆ Jean S. Benson Scholarship Fund
- ◆ Mrs. Keith S. Benson Scholarship Fund
- ◆ August and Elizabeth Beran Family Scholarship Fund
- ◆ Bickel Family Scholarship Fund - In Memory of Jean M. Bickel
- ◆ Dr. Fay R. Biles and Bedford H. Biles Scholarship Fund
- ◆ Blais, Case, Catti, D'Alessandro, Lucas, and Manone Families Scholarship Endowed Fund
- ◆ Blue Cross and Blue Shield of Florida Nursing Scholarship Fund
- ◆ Bonita Springs Area Chamber of Commerce Scholarship Fund

- ◆ The Krishna and Suseela Botlagudur Endowed Scholarship Fund
- ◆ Bower School of Music Endowment
- ◆ President Wilson G. and Jo Anna Bradshaw Scholarship Fund
- ◆ Edward John Brenner Memorial Engineering Scholarship Endowed Fund
- ◆ The Brooks Foundation Endowed Scholarship Fund
- ◆ Keith Bullock Memorial Scholarship Endowed Fund
- ◆ Mrs. Bunny Foundation Scholarship Fund
- ◆ Jackson Burgess Endowed Scholarship Fund
- ◆ Carol and Jim Burnette Endowed Graduate Scholarship Fund
- ◆ The Zelda Butler Memorial Scholarship Fund
- ◆ Pat and Laura Cacho Family Scholarship Endowed Fund
- ◆ The Caloosahatchee Chapter of the National Society of the Daughters of the American Revolution Endowed Scholarship Fund
- ◆ Ruth M. and Cleveland L. Campbell Engineering Scholarship Fund
- ◆ Ruth M. and Cleveland L. Campbell Engineering Scholarship Endowed Fund
- ◆ Cape Coral Rotary Foundation Endowed Scholarship Fund
- ◆ E. Odell Carlton and Golda Carlton Scholarship Fund
- ◆ CAS Science Faculty Scholarship Fund
- ◆ Charlotte Community Foundation Endowed Scholarship Fund
- ◆ Charlotte Regional Medical Center Scholarship Fund
- ◆ Sheldon and Celie Chassin Scholarship Endowed Fund
- ◆ Clarence & Natalie Chesnutt Scholarship Fund for Instrumental Music Education
- ◆ Coastal Village Endowed Scholarship Fund
- ◆ Brian and Denise Cobb Endowed Scholarship Fund
- ◆ Harvey D. and Janet G. Cohen Scholarship Fund
- ◆ College Club Apartments Endowed Scholarship Fund
- ◆ Joseph "Joe" Collier Memorial Scholarship Endowed Fund
- ◆ Barron and Dana Collier Scholarship Fund
- ◆ Gregory and Angela Valvo Collins Scholarship Fund
- ◆ Community Health Association Scholarship Fund
- ◆ Computing Services Endowed Scholarship Fund
- ◆ Herbert D. and Carolyn E. Conant Scholarship Endowed Fund
- ◆ Jack and Betty Conner Endowed Scholarship Fund
- ◆ Jack and Betty Conner Fellowship Fund
- ◆ The Elizabeth A. and Jack A. Conner Scholarship Fund
- ◆ Alan and Selma Cooper Endowed Scholarship Fund in Memory of James Francis Cooper
- ◆ Coopers and Lybrand Foundation Scholarship Fund
- ◆ David and Karen Crowther Scholarship Fund
- ◆ William and Susan Dalton Scholarship Endowed Fund
- ◆ Udaya N. and Ira R. Dash Scholarship Fund
- ◆ The Davis Family Scholarship Endowed Fund
- ◆ DeAngelis Diamond Construction Scholarship Endowed Fund
- ◆ Betty Ann Denholtz Memorial Scholarship Fund
- ◆ Duffus Family Fund
- ◆ Edison Garden Club - Peggy Karkalits Scholarship Endowed Fund
- ◆ Ruth L. Faith Endowed Scholarship Fund for Women in Mathematics
- ◆ The Florida Institute of Certified Public Accountants, Southwest Florida Chapter, Accounting Endowment
- ◆ Fifth Third Scholarship Endowed Fund
- ◆ Paul and Aline Flynn Scholarship Fund
- ◆ George E. Fogg Student Research Fund
- ◆ Rebecca Fogg Endowed Scholarship Fund
- ◆ Rotary Foundation of Fort Myers South Endowed Scholarship Fund
- ◆ Fort Myers Women's Network Endowed Scholarship Fund
- ◆ Jane Foster and C. B. Pate Scholarship Fund
- ◆ Jules Freeman Scholarship Endowed Fund
- ◆ Friends of East County Regional Library Scholarship Fund
- ◆ Bruce R. Geyer Memorial Book Scholarship Fund
- ◆ Golden Apple Teacher Recognition Program™ Scholarship Fund
- ◆ Graduate Business Association Endowed Fellowship Fund
- ◆ Marvin and Helene Gralnick Scholarship Fund
- ◆ Greater Fort Myers Women in Business Scholarship Fund
- ◆ Greater Fort Myers Chamber of Commerce, Inc. Endowed Scholarship Fund
- ◆ Carole Green Endowed Nursing Scholarship Fund
- ◆ John and Dorothy Guigon Academic Scholarship Fund
- ◆ John and Dorothy Guigon Endowed Scholarship Fund
- ◆ Harvard Jolly Architecture Scholarship Endowed Fund
- ◆ Harvard Jolly Architects Endowed Scholarship Fund
- ◆ Florence Hecht Endowed Scholarship Fund
- ◆ Heidt & Associates, Inc., Engineering Scholarship Endowed Fund
- ◆ Dr. Denise Heinemann Nursing Scholarship Fund
- ◆ Henderson, Franklin, Starnes & Holt, P.A. Scholarship Fund - in Honor and Recognition of Retired Stockholders James A. Franklin, Jr., Albert Frierson, Stephen L. Helgemo, and Ronald W. Smalley
- ◆ Carisa Loraine Herald Memorial Scholarship
- ◆ Barbara and Joe Marlin Hilliard Scholarship Fund
- ◆ Joe A. and "Tippy" Hilliard Endowed Scholarship Fund
- ◆ Hillmyer-Tremont Endowed Scholarship Fund
- ◆ Hispanic Council of Southwest Florida Endowed Scholarship Fund - In Memory of Mary Giglia Johnson
- ◆ HMA Scholarship Fund in Memory of Robyn Wright

>> ENDOWED FUNDS

- ◆ Ruth and Burt Holmes Endowed Scholarship Fund
- ◆ Hospitality Financial and Technology Professionals: Florida Gulf Coast Chapter Scholarship Endowed Fund
- ◆ David and Beth Howard Scholarship Fund
- ◆ Mary Frances Howard Nursing Scholarship Fund
- ◆ Thomas Howard/Gannett Presidential Endowment Scholarship Fund
- ◆ HSA Engineers & Scientists Scholarship Endowed Fund
- ◆ William J. and Lillian S. Hudson Endowed Scholarship Fund
- ◆ Muriel K. Hudson Endowed Nursing Scholarship Fund
- ◆ Human Resources Department Scholarship Fund
- ◆ Idelson Family Endowed Scholarship Fund
- ◆ India Association of Fort Myers, Inc. Scholarship Fund
- ◆ Johnson Engineering Endowed Scholarship Fund
- ◆ Melissa C. Johnson Nursing Scholarship Fund
- ◆ The Alan G. and Sandra R. Kaplan Endowed Scholarship Fund
- ◆ Dr. Melvyn J. Katzen Endowed Scholarship Fund
- ◆ Kelly Foundation Scholarship Fund
- ◆ Pop and Marj Kelly Scholarship Fund
- ◆ Mabel and Arnold Keys Scholarship Fund
- ◆ Kiwanis Club of Lehigh Acres Scholarship Fund
- ◆ Kiwanis Club of Lehigh Acres Endowed Scholarship Fund
- ◆ Klein Family Scholarship Fund - In Memory of Viola Odenheimer
- ◆ Charlie Kleman Scholarship Fund
- ◆ James F. and Lynn E. Knupp Scholarship Endowed Fund
- ◆ John K. and Bella E. Kontinos Endowed Scholarship Fund
- ◆ Marilyn Bower Korest Music Therapy Scholarship Endowed Fund
- ◆ The Manhattan Construction Family Scholarship Fund
- ◆ Edward T. and Esther W. Kuss Scholarship Fund
- ◆ Laboda Family Endowed Scholarship Fund
- ◆ Lambros Family Scholarship Fund
- ◆ LarsonAllen, LLP Scholarship Fund
- ◆ The Martin and Patricia Latter Scholarship Fund
- ◆ Sanford Lawton, Jr. Endowed Scholarship Fund
- ◆ Silver Anniversary/Lee County Electric Cooperative, Inc. Scholarship Fund
- ◆ Lee Memorial Health System Endowed Scholarship Fund
- ◆ Sheryl and Donald A. Lesch Scholarship Endowed Fund
- ◆ Elaine P. and W. Bernard Lester Scholarship Fund
- ◆ Dr. Erich Liebert Endowed Scholarship Fund
- ◆ M. William and Marilyn Lightner Scholarship Fund
- ◆ Veora and John R. Little Alumni Scholarship Fund
- ◆ Lodge Construction Scholarship Endowed Fund
- ◆ Professor and Mrs. E. L. Lord Endowed Scholarship Fund - Given by Richard W. and Esther A. Shaughnessy
- ◆ Dorothea Low Endowed Scholarship Fund in Memory of George E. Low
- ◆ Raymond J. Lutgert Scholarship Endowed Fund
- ◆ Scott Howard Malnak Memorial Scholarship Fund
- ◆ Donald and Elizabeth Manchester Scholarship Fund
- ◆ Elissa D. Manna Fund for Mechanical Engineering – In Memory of Anthony F. Manna
- ◆ Marco Island Shell Club Scholarship Endowed Fund
- ◆ Paul J. Marinelli Scholarship Fund for Excellence in Academics and Leadership
- ◆ Roger and Nancy McCabe Scholarship Fund
- ◆ Andrew McGillen Memorial Scholarship Endowed Fund
- ◆ Steve and Connie McIntosh Scholarship Endowed Fund
- ◆ Meftah Foundation Fund
- ◆ Meftah Scholarship Foundation Fund
- ◆ Edward R. Melton Scholarship Fund
- ◆ William C. and Debra L. Merwin Scholarship Fund for Leadership Development
- ◆ Miromar Endowed Scholarship Fund
- ◆ Moorings Park Foundation Scholarship Fund at FGCU
- ◆ Moseley Title Foundation Endowed Scholarship Fund
- ◆ Munters Corporation Endowed Scholarship Fund
- ◆ Naples Garden Club Fellowship Endowed Fund
- ◆ Naples Press Club Scholarship Endowed Fund
- ◆ Naples Town Hall Scholarship in honor of Barbara and Earle Borman Endowed Fund
- ◆ Naples Women in Transition Scholarship Fund
- ◆ Wilma M. Nason Scholarship Endowed Fund
- ◆ The Diana Nerestant Memorial Scholarship Fund
- ◆ Newman Oil Scholarship Fund
- ◆ News-Press Publishing Company Scholarship Fund
- ◆ Nurse Practitioner Council of Collier County Scholarship Endowed Fund
- ◆ The Oakes Family Engineering Scholarship Endowed Fund
- ◆ Occupational Therapy Advisory Council Endowed Scholarship Fund
- ◆ Charleen Belcher Olliff Endowed Scholarship Fund
- ◆ Oswald, Trippe and Company, Inc. Endowed Scholarship Fund
- ◆ The Thelma B. and Edwin M. Oulton Scholarship Fund
- ◆ Owen-Ames-Kimball Company Engineering Scholarship Fund
- ◆ Owen-Ames-Kimball Company Engineering Scholarship Endowed Fund
- ◆ Michael B. Peceri Endowed International Scholarship Fund
- ◆ Periwinkle Garden Club Scholarship Fund
- ◆ Marlin F. and Alice M. Perry Scholarship Fund
- ◆ The Chesley Perry Endowed Scholarship Fund/Fort Myers Campus
- ◆ Southwest Florida Chapter, P.G.A. Endowed Scholarship Fund
- ◆ Phi Beta Kappa Association of Southwest Florida Endowed Scholarship Fund
- ◆ Physical Plant Endowed Scholarship Fund
- ◆ John E. and Aliese Price Foundation Scholarship Fund
- ◆ Private Wealth Consultants , LLC - Leo Boisvert / Erik Heben Athletics Scholarship Endowed Fund
- ◆ G. Jeffrey Provol Scholarship Fund
- ◆ Elizabeth Rash Endowed Scholarship Fund
- ◆ Real Estate Investment Society Endowed Scholarship Fund
- ◆ Red Tide Relief Endowed Fund
- ◆ SW Florida RIMS Chapter Scholarship Fund
- ◆ Riverwoods Plantation Scholarship Fund
- ◆ The Kellie Jean Robinson Scholarship Memorial Fund
- ◆ Rockin' Christmas Endowed Scholarship Fund Founded by PrivateSky® Aviation Services, Inc., the Vincent and Illona Wolanin Family, and the Dr. John and Liz Kagan Family
- ◆ Joyce Rogaski Graduate Fund
- ◆ Joyce and Emory H. Rogaski Endowed Scholarship Fund
- ◆ Marion W. Routh Memorial Scholarship Endowed Fund
- ◆ RWA Scholarship Fund - In Memory of James Anderson
- ◆ George Sanders, Jr. Endowed Scholarship Fund
- ◆ The Sanibel Captiva Trust Company Business Scholarship Endowed Fund
- ◆ Rotary Club of Sanibel-Captiva Endowed Scholarship Fund in Memory of William Angst
- ◆ The Gene Sarazen/Professional Golf Management Scholarship Endowed Fund
- ◆ Scandia Lodge 3-617 Sons of Norway Scholarship Endowed Fund
- ◆ The Schoen Foundation Veteran's Scholarship Endowed Fund
- ◆ Schwab Ready Mix Endowed Scholarship Fund
- ◆ Scripps Howard Foundation Scholarship Fund
- ◆ Seminole Casino Immokalee Resort & Hospitality Management Program Scholarship Fund
- ◆ Susan Price Shrader Memorial Scholarship Endowed Fund
- ◆ Hans and Erna Siebert Fund for Excellence
- ◆ William and Joan Slocum FGCU Scholarship Fund
- ◆ George M. and Mabel H. Slocum Endowed Scholarship Fund
- ◆ Ellen Wolfson Smyle Memorial Scholarship Endowed Fund
- ◆ Grace Johnston Sneckenberger Endowed Scholarship Fund
- ◆ Southwest Florida Wine & Food Fest Scholarship Endowed Fund
- ◆ Southwest Florida Water Environment Association Scholarship Endowed Fund
- ◆ Emma and C. Gilbert Spies Scholarship Fund
- ◆ Douglas R. and Terri L. St. Cerny Scholarship Endowed Fund
- ◆ Douglas R. St. Cerny Endowed Scholarship Fund
- ◆ Robin and Duane Stranahan, Jr. Scholarship Fund
- ◆ Margaret and Peter Sulick Endowed Scholarship Fund
- ◆ Dr. E. J. Arpin-Sypert and Dr. George W. Sypert Scholarship Fund
- ◆ Taste of Collier, in honor of Ray & June Singer Scholarship Endowed Fund
- ◆ Linda and Bob Taylor Endowed Scholarship Fund
- ◆ John D. and Constance M. Temoyan Scholarship Fund
- ◆ Ronald L. and Teresa R. Thatcher Endowed Scholarship Fund In Memory of Lucretia Nichols
- ◆ Tier Electric Endowed Scholarship Fund
- ◆ Ruth U. Tobe Competitive Music Scholarship Fund
- ◆ The Ronald and Kathy Toll Scholarship Endowed Fund
- ◆ Town and Gown Endowed Scholarship Fund - In Memory of Mary Frances Howard
- ◆ Arthur W. Tunnell, Jr. Accounting Scholarship Fund
- ◆ U.S. Bank, N.A. Endowed Scholarship Fund
- ◆ United Christian Giving Scholarship Fund #1
- ◆ United Christian Giving Scholarship Fund #2
- ◆ United Christian Giving Scholarship Fund #3
- ◆ United Christian Giving Scholarship Fund #4
- ◆ United States Sugar Corporation Scholarship Fund
- ◆ David Graham/Urban Land Institute Scholarship Endowed Fund
- ◆ Utilities Structure, Inc., Scholarship Endowed Fund
- ◆ Val Ward Family College of Business Endowed Fund
- ◆ George C. Van Rhee Scholarship Fund
- ◆ Mary D. Van Slyke Memorial Scholarship Fund
- ◆ Joyce Anne Vitelli Scholarship Fund
- ◆ Dolph and Sharon von Arx Fellowship Fund
- ◆ Dolph and Sharon von Arx Scholarship Fund
- ◆ Leah Walden Endowed Nursing Scholarship Fund
- ◆ Lori Johnson Wallace Memorial Scholarship for Music Pedagogic Excellence Fund
- ◆ Wanderlust Scholarship Endowed Fund
- ◆ Cecile Liston Wang Endowed Scholarship Fund
- ◆ Warfield-Rotary Club of Bonita Springs Foundation Scholarship Endowed Fund
- ◆ Robert A. Weiss, Jr. Scholarship Endowed Fund
- ◆ Wells Fargo Scholarship Fund
- ◆ Wells Fargo Scholarship Fund 2
- ◆ Wells Fargo Scholarship Fund 3
- ◆ Jaynie and Stanley Whitcomb Endowed Fund
- ◆ Steve and Rose Wilhelm Family Scholarship Fund
- ◆ Myra N. and Van Zandt Williams, Jr. Scholarship Fund
- ◆ Thomas and Donna Williams Scholarship Fund - In Memory of Wilma Gestefeld
- ◆ Thomas and Donna Williams Scholarship Fund - In Memory of Florence Williams
- ◆ Dr. Gerald C. Wrobel Scholarship Fund
- ◆ Elizabeth Franklin, George & Carol Yovanovich Memorial Fund
- ◆ Jovan Zepcevski Engineering Scholarship Endowed Fund
- ◆ Zonta for Women (Ethics) Scholarship Fund
- ◆ Zonta Endowed Scholarship Fund

>> HONOR ROLL OF DONORS

The Honor Roll of Donors includes all donors who made contributions of \$1,000 or more cumulatively to the Florida Gulf Coast University Foundation, Inc. from April 1, 1993 through June 30, 2011. It is with great pleasure and gratitude that we acknowledge those who have so generously supported Florida Gulf Coast University since the Florida Gulf Coast University Foundation was established. In addition to those listed in this Honor Roll of Donors, many others have supported FGCU through direct assistance to students, colleges, programs and activities. The Foundation thanks these donors as well.

Order of the Majestic Eagle (\$5 million or more)

- ◆ Alico, Inc.
- ◆ Elizabeth A. and Jack A. Conner*
- ◆ Ginn Resorts
- ◆ Pop and Marjorie H. Kelly*
- ◆ Kitson & Partners
- ◆ Mr. and Mrs.* Alan Korest
- ◆ Raymond L. and Beverly Lutgert*
- ◆ Mr. and Mrs. Herbert J. Sugden*
- ◆ Dr. E. J. Arpin and Dr. George W. Syper
- ◆ The Whitaker Foundation

Eagle Society (\$1 million - \$4,999,999)

- ◆ Anonymous
- ◆ Backe Foundation
- ◆ Kathryn I. Beeken
- ◆ CenturyLink Business
- ◆ The Conservancy of Southwest Florida
- ◆ Mrs. Sidney (Berne) R. Davis
- ◆ Mary E. Dooner Foundation
- ◆ The Freeman Family
- ◆ Mr. and Mrs. John V. Guigon
- ◆ Mr. and Mrs. Scott Kapnick
- ◆ Kelly Tractor Co
- ◆ Peter D. & Eleanore A. Kleist Foundation
- ◆ Lee County Board of County Commissioners
- ◆ Lee Memorial Health System Foundation
- ◆ Linda and David Lucas
- ◆ Donald and Elizabeth Manchester*
- ◆ Moorings Park
- ◆ Naples Botanical Garden
- ◆ Naples Children and Education Foundation
- ◆ NCH Healthcare System
- ◆ Preferred Materials, Inc.
- ◆ Juliet C. Sproul
- ◆ Mary B. Ullman*
- ◆ Norman and Nancy Vester

Eagle Court (\$500,000 - \$999,999)

- ◆ William and Joan Attridge
- ◆ Anonymous
- ◆ BB&T
- ◆ Mrs. Keith S. Benson*

- ◆ Charlotte County Board of County Commissioners
- ◆ Chico's FAS Inc.
- ◆ Collier County Board of Commissioners
- ◆ Herbert D. and Carolyn E. Conant
- ◆ Ruth L. Faith*
- ◆ Gerald F.* and Marjorie G. Fitzgerald
- ◆ George and Rebecca Fogg
- ◆ Kay and Robert T. Gow
- ◆ Meftah Scholarship Foundation
- ◆ Pfeffer-Beach Foundation, Inc.
- ◆ The John E. and Aliese Price Foundation, Inc.
- ◆ Southwest Florida Community Foundation
- ◆ Mr. and Mrs. Duane Stranahan, Jr.
- ◆ Mr.* and Mrs. Duane Swanson, Sr.
- ◆ Ruth U. Tobe
- ◆ Sharon and Dolph von Arx
- ◆ WCI Communities, Inc.
- ◆ Wells Fargo

University Cabinet (\$100,000 - \$499,999)

- ◆ Abernathy Port Charlotte Kiwanis Foundation Inc.
- ◆ Advanced Pain Management Specialists
- ◆ Ajax Building Corporation
- ◆ Christopher and Susie Allen
- ◆ Allen Concrete & Masonry, Inc.
- ◆ Anonymous
- ◆ Architecture, Inc.
- ◆ Arthrex, Inc.
- ◆ ASQ - Aviation, Space and Defense Division
- ◆ William and Joan Attridge
- ◆ John and Katherine Backe
- ◆ Mr. and Mrs. Gray C. Ballman
- ◆ Bank of America
- ◆ Barron Collier Companies
- ◆ BB&T - Oswald Trippe and Co
- ◆ Charles* and Eileen Belcher
- ◆ Bedford H. Biles, J.D. and Fay R. Biles, Ph.D.
- ◆ Blue Cross & Blue Shield of Florida
- ◆ Bernice Josephine Bongiorno*
- ◆ Bonita Bay Group
- ◆ Wilson and Jo Anna Bradshaw
- ◆ Buehler Family Foundation
- ◆ P. H. & A. C. Buehler, Jr. Foundation
- ◆ The Mrs. Bunny Foundation
- ◆ Cornelius (Pat) Cacho

- ◆ Caloosa Catch & Release, Inc.
- ◆ Ruth M. and Cleveland L. Campbell
- ◆ Cape Coral Kiwanis Foundation, Inc.
- ◆ Charlotte Community Foundation, Inc.
- ◆ The Club at Grandezza
- ◆ Mr. and Mrs. Brian E. Cobb
- ◆ Gilbeart H.* and Anne Collings
- ◆ Columbia, Southwest Florida Division
- ◆ Comcast Cable
- ◆ Dooner Family Equities
- ◆ Charles Edison Fund
- ◆ Evelyn L. Egan*
- ◆ Embassy Suites Fort Myers-Estero
- ◆ Estero Bay Chevrolet
- ◆ Fahlgren
- ◆ Fifth Third Bank
- ◆ Florida Aluminum and Steel, Inc.
- ◆ Florida Board of Governors Foundation, Inc.
- ◆ Florida Coca-Cola Bottling Company
- ◆ Florida Power & Light Co.
- ◆ Foundation for Lee County Public Schools, Inc.
- ◆ Friends of East County Regional Library GRAEF
- ◆ The Greater Cedar Rapids Community Foundation
- ◆ Barbara and Joe Marlin Hilliard
- ◆ Joe A. and "Tippy" Hilliard*
- ◆ The Hillmyer-Tremont Student Athlete Foundation
- ◆ HMA Foundation, Inc.
- ◆ Hole Montes, Inc.
- ◆ Drs. G. Burt and Ruth W. Holmes
- ◆ Beth and David B. Howard
- ◆ Mary Frances Howard*
- ◆ IBIS
- ◆ IBM Eduquest
- ◆ The Richard E. Jacobs Group
- ◆ Glen and LaVonne Johnson
- ◆ Johnson Engineering, Inc.
- ◆ Alan G. and Sandra R. Kaplan
- ◆ Kelly Foundation, Inc.
- ◆ Key Bank
- ◆ Mabel and Arnold Keys*
- ◆ Peter D.* and Eleanore A. Kleist
- ◆ The Gerald Knox Fund
- ◆ Marc* and Doris Kolber
- ◆ Edward T. and Esther W. Kuss*
- ◆ Mr. and Mrs. Jon Laidig
- ◆ Oscar Langford
- ◆ Lee Healthcare Resources
- ◆ Dr. and Mrs. W. Bernard Lester
- ◆ Dr. John R. and Veora M. Little
- ◆ Lodge Construction Inc.
- ◆ The Lutgert Companies
- ◆ Manhattan Construction (Florida), Inc.
- ◆ In Memory of Dr. William R. Maples, Distinguish Service Professor, Department of Anthropology, University of Florida
- ◆ Gerard and Barbara Marino
- ◆ McGarvey Development Company
- ◆ Dr. and Mrs. Steve McIntosh
- ◆ Miromar Development Corporation
- ◆ Miromar Lakes Golf Club
- ◆ Naples Garden Club
- ◆ Naples Yacht Club Chapter, Int'l Order of the Blue Gavel
- ◆ Wilma M. Nason*
- ◆ The News-Press
- ◆ Northern Trust Bank
- ◆ Fingers O'Bannon Memorial Snook Tournament at Cabbage Key
- ◆ The William J. & Joyce A. O'Meara Foundation
- ◆ Thelma B. and Edwin M. Oulton*
- ◆ Owen-Ames-Kimball Company
- ◆ Marlin F. and Alice M. Perry*
- ◆ PrivateSky Aviation Service, Inc.
- ◆ Sidney and Esther Rabb Charitable Foundation
- ◆ Elizabeth Rash
- ◆ Raymond Building Supply
- ◆ Regal Electric, Inc.
- ◆ Joyce and Emory Rogaski*
- ◆ Rubell Family Collection
- ◆ The Schoen Foundation
- ◆ SCM Properties, LLC
- ◆ Richard E. Sherman
- ◆ Helen E. Shick*
- ◆ Hans and Erna Siebert*
- ◆ Source Interlink Companies
- ◆ C. Gilbert and Emma Spies*
- ◆ The Stans Foundation
- ◆ Stevens Industries, Inc.
- ◆ The Stranahan Foundation
- ◆ James and Donna Sublett
- ◆ Peter and Margaret Sullick
- ◆ SunTrust Bank, Southwest Florida
- ◆ SWFL Children's Charities, Inc
- ◆ Tabiran Corporation
- ◆ Robert M. and Linda K. Taylor
- ◆ THA Foundation
- ◆ Tier Electric, Inc.
- ◆ Uncommon Friends Foundation
- ◆ United Way of Lee County, Inc.
- ◆ University Housing Services, Inc.
- ◆ Raymond J. Vitelli, Ph.D.
- ◆ David and Cecile Wang
- ◆ Mr. and Mrs. James S. White
- ◆ Myra and Van Zandt Williams, Jr. Fund of the Princeton Area Community Foundation
- ◆ Jovan A. Zepevski
- ◆ Zep Construction, Inc.

University Council (\$25,000 - \$99,999)

- ◆ 131 Group, Incorporated
- ◆ Agnoli, Barber & Brundage, Inc.
- ◆ Allen Systems Group, Inc.
- ◆ ALLETE Properties
- ◆ American Express
- ◆ American Honda Foundation
- ◆ Judge* and Mrs. Isaac Anderson, Jr.
- ◆ Anonymous
- ◆ The Antigua Group
- ◆ Architectural Network, Inc.
- ◆ AT&T Foundation
- ◆ B & I Contractors, Inc.
- ◆ Balfour Beatty Construction
- ◆ Beef O'Brady's
- ◆ Ben Hill Griffin, Inc.
- ◆ Mr. and Mrs. Gary E. Bickel
- ◆ Mr. and Mrs. Jack Blais
- ◆ Don and Susan Blanchard
- ◆ Bonita Daily News
- ◆ Jeffrey R. Bristol
- ◆ Britto Central
- ◆ The Brooks Foundation
- ◆ Brown & Root Building Company
- ◆ BSSW Architects
- ◆ Curtis D. Bullock
- ◆ Clyde Butcher

>> HONOR ROLL OF DONORS

- ◆ The Calvin & Flavia Oak Foundation, Inc.
- ◆ Cape Coral Rotary Foundation, Inc.
- ◆ James P. and Patricia A. Carroll
- ◆ Tom and Lynda Case
- ◆ Mr. and Mrs. Joseph Catti
- ◆ Charlotte Regional Medical Center
- ◆ Lillian and Clay Clukies*
- ◆ Coastal Beverage, Ltd.
- ◆ CobbCorp, LLC
- ◆ College of Life Foundation
- ◆ Collier County Audubon Society
- ◆ Collier County Micro-Loan Enterprise/ Banking Partnership
- ◆ Commercial Air Management, Inc.
- ◆ Community Health Association, Inc.
- ◆ Mr. and Mrs. William G. Crone
- ◆ Crowther Roofing & Sheet Metal of Florida, Inc.
- ◆ The Culinary and Hospitality Education Foundation of SWFL
- ◆ Frank D'Alessandro*
- ◆ William L. and Susan L. Dalton
- ◆ Udaya* and Ira Dash
- ◆ Jeffrey D. Davis
- ◆ Dr. Edith Potter Deats*
- ◆ Eugene C. Dooner*
- ◆ David Dworak
- ◆ Damon Dworak
- ◆ Mr.* and Mrs. James H. Eakes
- ◆ Ecological Research & Action Foundation, Inc.
- ◆ Mr. and Mrs. Charles B. Edwards
- ◆ Estero Commons LLC
- ◆ The Explorers Club of Southwest Florida
- ◆ Farr, Farr, Emerich, Sifrit, Hackett and Carr, P.A.
- ◆ Fawcett Memorial Hospital
- ◆ Dr. and Mrs. John B. Fenning
- ◆ Fernandez Family Foundation, Inc.
- ◆ First Financial Employee Leasing, Inc.
- ◆ First National Bank of Florida
- ◆ Five County Insurance Agency, Inc.
- ◆ Florida Community Bank
- ◆ Florida Institute of Certified Public Accountants, Southwest Florida Chapter
- ◆ Fort Myers Toyota
- ◆ Fort Myers Women's Network
- ◆ Gannett Foundation, Inc.
- ◆ Rene Garner
- ◆ Germeshausen Foundation
- ◆ GFA International, Inc.
- ◆ Goldberg, Racila, D'Alessandro and Noone, LLC
- ◆ Eva Sugden Gomez
- ◆ Grant, Fridkin, Pearson, Athan & Crown, P.A.
- ◆ Gravina, Smith, Matte & Arnold Marketing and Public Relations
- ◆ Greater Fort Myers Chamber of Commerce, Inc.
- ◆ Gulf Coast Materials of SW Florida
- ◆ Haffenreffer Family Fund
- ◆ Marshall W. and Lori Hanno
- ◆ Hanno Family Foundation, Inc.
- ◆ Dr. and Mrs. Lowell Hart
- ◆ Harvard Jolly Architecture
- ◆ Parker and Denise Heinemann
- ◆ Henderson, Franklin, Starnes & Holt, P.A.
- ◆ Herbal Science, LLC
- ◆ Arthur and Phyllis Herman
- ◆ Marguerite and Guy Howard*
- ◆ John and Darlene Huether
- ◆ Mary V. Hull*
- ◆ The Humane Society of the United States
- ◆ Hyatt Regency Coconut Point Resort & Spa
- ◆ IBERIABANK
- ◆ Mr. and Mrs. Charles K. Idelson
- ◆ Industrial Distribution Services
- ◆ Investors Security Trust Co.
- ◆ Ann Jacobson Fund
- ◆ Johnson Controls, Inc.
- ◆ The Johnson Family Foundation
- ◆ Johnson-Prewitt & Assoc. Inc.
- ◆ H. Johnston Family Foundation
- ◆ Dr. and Mrs. H. Q. Jones, Jr.
- ◆ Dr. and Mrs. Melvyn J. Katzen
- ◆ Cathryn C. Keller*
- ◆ Keylime Bistro
- ◆ Kiwanis Club of Lehigh Acres Foundation, Inc.
- ◆ Dick and Nancy Klaas
- ◆ Dr. David and Mrs. Stephanie Klein
- ◆ James F. and Lynn E. Knupp
- ◆ Charles G. Koch Charitable Foundation
- ◆ LabCorp
- ◆ Dr. and Mrs. Gerald Laboda
- ◆ Mr. and Mrs. Alex S. Lambros
- ◆ LCEC
- ◆ Lee County Industrial Development Authority
- ◆ Lee County Medical Society Alliance
- ◆ Lee County Sheriff's Office
- ◆ Chip and Sheryl Lesch
- ◆ Lit & More
- ◆ Dorothea D. Low*
- ◆ Scott and Simone Lutgert
- ◆ Mr. and Mrs. Vito Manone
- ◆ Marco Island Shell Club
- ◆ Marsh USA, Inc.
- ◆ The James Harper Marshall Foundation, Inc.
- ◆ The Martin Foundation, Inc.
- ◆ Jerry and Betty Mason
- ◆ The Maxpoffell Foundation
- ◆ Roger and Nancy McCabe Foundation
- ◆ Thomas and Carol McCann
- ◆ McDonald's Restaurant's/Adams & O'Reilly, Inc.
- ◆ Roy and Beverly McTarnaghan
- ◆ The Mediterra Foundation Fund
- ◆ Dr. William C. Merwin*
- ◆ Miromar Outlet West, LLC
- ◆ Montrose Auto Group
- ◆ Naples Daily News
- ◆ Naples Dawgs, Inc.
- ◆ Naples Day Surgery North
- ◆ Naples Diagnostic Imaging Center, Ltd
- ◆ Naples-Fort Myers Greyhound Track
- ◆ Naples Grande Resort & Club
- ◆ Naples Women in Transition
- ◆ Helen E. Nestor*
- ◆ Pamela Noland
- ◆ Office Furniture & Design Center, Inc.
- ◆ Philip W. and Mariette C. Orth*
- ◆ Palmira Golf Club
- ◆ Pavese Law Firm
- ◆ Peace River Regional
- ◆ Tom Perry Family Foundation
- ◆ Physicians Regional Healthcare System
- ◆ PPG Industries, Inc.
- ◆ Premier Properties of SW Florida
- ◆ Regions Bank
- ◆ The Ritz-Carlton, Naples
- ◆ Riverwoods Plantation Condominium Association
- ◆ David and Ellen Rosand
- ◆ Gayle Rosemann and Paul McElwee
- ◆ Rotary Club of Sanibel-Captiva
- ◆ Donald K. and Margaret Routh
- ◆ Sanibel Captiva Trust Company
- ◆ Sanibel Harbour Marriott Resort & Spa
- ◆ Gene and Mary Sarazen Foundation
- ◆ SchenkelShultz Architecture
- ◆ Charlotte R. Schmidlapp Fund
- ◆ Donna and John Schubert
- ◆ Larry and Connie Schuster
- ◆ Schwab Ready Mix, Inc.
- ◆ The Scottsdale Company
- ◆ Seminole Casino Immokalee
- ◆ Service Painting of Florida
- ◆ Sheldon T. Shoff
- ◆ Robert W. Shrader
- ◆ Signature Communities
- ◆ Skanska USA Building, Inc.
- ◆ George M. and Mabel H. Slocum Foundation from the Joan K. Slocum Foundation
- ◆ Joan and William Slocum
- ◆ Donald and Angela Smith
- ◆ Kevin W. Smith
- ◆ Southwest Florida Chapter PGA
- ◆ Southwest Florida Regional Medical Center
- ◆ Dr. Susan E. Stans and Mr. Steven H. Stans*
- ◆ Steinway Piano Society – Greg and Sara Billings
- ◆ Stock Development
- ◆ Alex and Patience Stom*
- ◆ Suncoast Schools Federal Credit Union's Suncoast for Kids Foundation
- ◆ Sunshine Ace Hardware
- ◆ Susan G. Komen for the Cure Southwest Florida
- ◆ Sussex Semiconductor, Inc.
- ◆ Dr. Jean Swangren
- ◆ SW Florida Chapter of RIMS
- ◆ Ted Todd Insurance Agency, Inc.
- ◆ Ronald L. and Teresa R. Thatcher - In Memory of Lucretia Nichols
- ◆ TKW Consulting Engineers, Inc.
- ◆ Town and Gown - Mrs. Barbara Church
- ◆ United Christian Giving
- ◆ Michael A. Clark, United Mechanical, Inc.
- ◆ Utilities Structures, Inc
- ◆ Val Ward Cadillac
- ◆ George C. Van Rhee*
- ◆ Marion and Glen* Van Slyke
- ◆ Vic's Painting, Inc.
- ◆ Mr. and Mrs. Robert W. Walden*
- ◆ The Idell A. Walkoe Fund of the Manatee Community Foundation
- ◆ Wasmer, Schroeder & Company, Inc.
- ◆ Waterman Broadcasting
- ◆ Wayne Wiles Floorcoverings
- ◆ West Bay Country Club
- ◆ Jaynie and Stanley Whitcomb
- ◆ Donna G. and Thomas E. Williams
- ◆ WilsonMiller
- ◆ Alan L. and Kathryn L. Wisne
- ◆ Harvey Youngquist
- ◆ Zonta Club of Fort Myers Area
- ◆ Dr. B. G. Adhinarayanan and Mrs. Meera B. Adhinarayanan
- ◆ Patsy Allen
- ◆ Barbara Amar
- ◆ Denise Rizzo Ambrefe
- ◆ American Association of University Women of Lee County
- ◆ American Residential Prop LLC
- ◆ Anonymous
- ◆ Appgar Foundation, Inc
- ◆ Armstrong World Industries, Inc.
- ◆ Artichoke & Company
- ◆ Associates in Cosmetic Surgery
- ◆ Richard H. Ballo - In Memory of Melissa C. Johnson
- ◆ Richard C. Banks, Ph.D.
- ◆ BankUnited
- ◆ Barraco and Associates
- ◆ Barron Collier Jr. Foundation
- ◆ Bay Colony
- ◆ Bay Colony Golf Club
- ◆ Cynthia A. Bennett
- ◆ Susan R. and Richard H. Benson
- ◆ The Thomas Berry Foundation
- ◆ Bireley Family Foundation
- ◆ Florence L. Black*
- ◆ BMW
- ◆ Leo Boisvert
- ◆ Bonita Springs Area Chamber of Commerce
- ◆ Mary L. Bonnette, Ph.D., R.N.
- ◆ Dr. and Mrs. James D. Borden
- ◆ Krishna and Suseela Botlagudur
- ◆ Bristol-Myers Squibb Foundation
- ◆ Broadway Palm Dinner Theatre
- ◆ Roger and Dian Brownell
- ◆ Dr.* and Mrs. Frank M. Bryan
- ◆ O.J. Buigas
- ◆ Bundschu Kraft, Inc.
- ◆ Dr. and Mrs. H. J. Burnette
- ◆ BVK Advertising
- ◆ Cape Coral Caloosa Chapter ABWA
- ◆ Cape Coral Hospital Auxiliary, Inc.
- ◆ Carlton Fields Attorneys at Law
- ◆ Carroll Property Investments, Inc.
- ◆ Judith and Jack Cassidy
- ◆ Dr. and Mrs. Ronald D. Castellanos
- ◆ Certified Jewelers
- ◆ Rod Chesnutt
- ◆ Coastal Village, LLC
- ◆ Janet and Harvey* Cohen
- ◆ Donald B. and Jean Cohen
- ◆ Coleman, Yovanovich & Koester, P.A.
- ◆ Collier County Hotel & Lodging Association
- ◆ Collier Enterprises
- ◆ Collier Sports Medicine and Orthopaedic Center, P.A.
- ◆ Gregory and Angela Valvo Collins
- ◆ Congress Jewelers
- ◆ Alan and Selma Cooper
- ◆ Paul and Charlotte Corrdry
- ◆ James* and Eileen Courtney
- ◆ Dr. and Mrs. Gene Cox
- ◆ The Board of Trustees of the Cox Trust
- ◆ Sam B. and Carol G. Crimaldi
- ◆ John and Mary* Crowley
- ◆ David and Karen Crowther
- ◆ Dr. and Mrs. Amal K. Das
- ◆ Daughters of the American Revolution-Caloosahatche Chapter
- ◆ Davidson Engineering, Inc.
- ◆ Kris and Kate Davis

University Club (\$10,000 - \$24,999)

- ◆ Richard C. and Linda Sue Ackert

>> HONOR ROLL OF DONORS

- ◆ Estate of Marian E. Davis
- ◆ DeAngelis Diamond Construction Inc.
- ◆ David Deiros
- ◆ D. Garrett Construction, Inc.
- ◆ Dolly and Hank* Diers
- ◆ Doubletree Guest Suites
- ◆ Dougherty Foundation Inc.
- ◆ The Duffus Family
- ◆ Mr. and Mrs.* W. Harry Durling
- ◆ Dr. Allan Dyen-Shapiro
- ◆ Earth Charter US, Inc
- ◆ Economic Development Council of Collier County
- ◆ Edison Garden Club
- ◆ Frieda* and Heard Edwards
- ◆ Thomas Ehlers and Sandy McCartney Ehlers
- ◆ Estero Gulf Coast Kiwanis Club
- ◆ Estuary Conservation Association
- ◆ Susan C. Evans
- ◆ EverBank
- ◆ Everglades A H E C, Inc.
- ◆ Eye Centers of Florida
- ◆ Fiddler's Creek Foundation, Inc
- ◆ Patrick E. Field
- ◆ Fifth Avenue Advisors, LLC
- ◆ Howard and Kathy Finch
- ◆ FineMark National Bank & Trust
- ◆ First National Bank of Naples
- ◆ Lina C. Fisher
- ◆ Richard Flanders
- ◆ Florida Career Centers
- ◆ Florida Engineering Society, Calusa Chapter
- ◆ Florida Real Estate Consultants
- ◆ Christine and Terry Flynn
- ◆ Follett Higher Education Group
- ◆ Fort Myers Eagles, SW FL Youth Baseball Club, Inc.
- ◆ Foundation of the Rotary Club of Bonita Springs Inc
- ◆ Foundation to Promote Open Society
- ◆ William E. and Dorothy Fritz
- ◆ The Gabor Agency, Inc.
- ◆ Valerie Boyd Gargiulo
- ◆ Garthwaite Family Foundation
- ◆ Mrs. Laverne N. Gaynor
- ◆ GE Client Business Services
- ◆ General Mills Foundation
- ◆ Mr. and Mrs. Daniel E. Gill
- ◆ Congressman and Mrs. Porter J. Goss
- ◆ Graduate Business Association
- ◆ Peg and Scott Gray-Vickrey
- ◆ Carole Green
- ◆ Dr. Marci Greene
- ◆ Greenscapes
- ◆ Grey Oaks Country Club, LTD
- ◆ Dr. Ben H. Griffin, III
- ◆ Gulf Coast Pet Partners, Inc.
- ◆ Gulfcoast South AHEC
- ◆ Don J. and Mosey Gunther
- ◆ Gloria Wright Gutwirth
- ◆ Ann Howard Hamilton
- ◆ Hamleg Enterprises, LLC
- ◆ Mr. and Mrs. Homer J. Hand
- ◆ Harbourside Custom Homes, Inc.
- ◆ Harley-Davidson of Fort Myers
- ◆ William L. Hayden*
- ◆ Health Management Associates, Inc.
- ◆ Heidt & Associates, Inc.
- ◆ The Donna Price Henry Family
- ◆ Morris Herstein
- ◆ Hilton Garden Inn
- ◆ Hispanic Council of Southwest Florida
- ◆ Laura A. Holquist
- ◆ Homewood Suites Hotel
- ◆ Hope Hospice
- ◆ Mr. and Mrs. William N. Horowitz
- ◆ Hospitality Financial and Technology Professionals
- ◆ Houchin Construction Inc.
- ◆ HSA Engineers & Scientists
- ◆ Julian L. Hudson*
- ◆ Lillian S. Hudson*/Christina Muratore and Jordan and Erin Hudson
- ◆ IAG Galleries
- ◆ India Association of Fort Myers
- ◆ ITW Foundation Matching Gift Program
- ◆ Norman E. and Caroline P. Jackson Philanthropic Fund
- ◆ Jan and Peter Jacobsen
- ◆ Jason's Deli
- ◆ Jewish Federation of Collier County
- ◆ Dr. and Mrs. John C. Kagan
- ◆ Dr. and Mrs. George C. Kalemeris
- ◆ Richard L. Kelly
- ◆ Mr. and Mrs. Maurice D. Kent
- ◆ K. J. King Family Limited Partnership
- ◆ Klaas Capital Group
- ◆ Kleist Family Foundation Inc
- ◆ Alan Korest, Jr.
- ◆ Barbara Krell
- ◆ Landmark Development Group
- ◆ Landon Development Group, LLC
- ◆ LaPlaya Beach & Golf Resort
- ◆ La Quinta Inn & Suites Airport
- ◆ Stephen and Nicole LaQuis
- ◆ LarsonAllen, LLP
- ◆ W & J Larson Family Foundation
- ◆ Marc and Lise Laviolette
- ◆ Rodney and Wendy Law
- ◆ Lee County Mosquito Control District
- ◆ Lehigh Acres Jaycee's Foundation, Inc.
- ◆ Lely Development
- ◆ Maureen and Arnold Lerner
- ◆ Gary Levenson
- ◆ James W. Lewis
- ◆ The Lightner Trusts
- ◆ Mr. and Mrs. Clyde A. Locker
- ◆ Mr. and Mrs. James Lozelle
- ◆ Make A Wish Foundation of Southern Florida
- ◆ Dr. and Mrs. Allen B. Malnak
- ◆ Elissa D. Manna
- ◆ Marco Beach Ocean Resort
- ◆ Marco Island Marriott Resort & Golf Club
- ◆ L. Gail Markham
- ◆ Mark Loren Designs, Inc.
- ◆ McBLT Ventures, Inc.
- ◆ Duncan McBride
- ◆ Mr. and Mrs. James McFadden
- ◆ The Honorable Gwendolyn F. McLin
- ◆ Dr. and Mrs. Michael Meftah
- ◆ Miles Media Group
- ◆ Dr. and Mrs. Charles J. Montgomery
- ◆ Valery and Mechlin Moore
- ◆ Robert and Linda Morris
- ◆ Kenneth Mortenson
- ◆ Mr. and Mrs. Edward A. Morton
- ◆ The Naples Beach Hotel & Golf Club
- ◆ Naples Press Club
- ◆ Naples United Church of Christ
- ◆ NeoGenomics Laboratories
- ◆ James D. and Eleanor F. Newton*
- ◆ Nurse Practitioner Council of Collier County
- ◆ Oakes Family
- ◆ Carole L. Olling
- ◆ OMG Americas, Inc.
- ◆ J. Foster Pate*
- ◆ Dr. Richard C. Pegnetter
- ◆ The William Penn Foundation
- ◆ Butch and Dorothy Perchan
- ◆ The John J. Petracco Family
- ◆ Mr. and Mrs. F. Fred Pezeshkan
- ◆ Poelker Transportation Services, Inc.
- ◆ John and Jinjer Pollock
- ◆ Frank and Linda Potestio
- ◆ Steven W. and Kathleen R. Powley
- ◆ Prager, Sealy & Co., LLC
- ◆ Premier Insurance Corporation
- ◆ Press Printing Company
- ◆ Publix Super Markets Charities
- ◆ Paul H. Pusey Foundation
- ◆ Charles* and Terri Ray
- ◆ RCP Services, LLC
- ◆ Real Estate Investment Society
- ◆ Gunther and Joan Reese
- ◆ Dr. James and Joann Rehak
- ◆ Dr. Roslyn Rensch
- ◆ Frances V. Riley*
- ◆ George F. Riley
- ◆ Mr. and Mrs. Ronald J. Riley
- ◆ Dr. and Mrs. Thomas J. Roberts
- ◆ Rockefeller Philanthropy Advisors
- ◆ Drs. Hudson and Elsa Rogers
- ◆ Ronald McDonald House Charities of Southwest Florida
- ◆ Rosalynn Carter Institute for Caregiving
- ◆ Rotary Club of Fort Myers South - Trippe Scholarship
- ◆ Rotary Foundation of Fort Myers South
- ◆ Thomas S. Roy, Jr.
- ◆ RWA, Inc.
- ◆ St. Andrew's Society of Southwest Florida, Inc
- ◆ Mr. and Mrs. Douglas R. St. Cerny
- ◆ Kenneth and Halcyon St. Hill
- ◆ The Saint Paul Foundation
- ◆ Mr. and Mrs. George F. Sanders*
- ◆ John and Joan Scanlon
- ◆ James W. Scatterday
- ◆ William Schawbel and Judy A. Samelson
- ◆ Mr.* and Mrs. Pete Schmieler
- ◆ Pam and Bill Schreiber
- ◆ Richard and Maureen Schulze
- ◆ Jerry and Donna Schwab
- ◆ Marguerite Scribante Foundation
- ◆ Scripps Howard Foundation
- ◆ Securian Foundation
- ◆ Seminole Tribe of Florida
- ◆ Ruth M. Service - In Memory of Bill Service
- ◆ Frances B. Setterblade*
- ◆ Shelton Jaguar/Porsche/Range Rover
- ◆ Shelving and More
- ◆ William F. Sibley Foundation
- ◆ Dr. and Mrs. Peter M. Sidell
- ◆ Signs & Things
- ◆ SimplexGrinnell
- ◆ C. Mickey and Jean M.* Skinner
- ◆ Carol R. Slade
- ◆ A. James and M. Kathryn Smith
- ◆ Bruce T. Smith
- ◆ Wilbur C. Smith
- ◆ Grace J. Sneckenberger*
- ◆ Sons of Norway Scandia Lodge 3-617
- ◆ Southern Audio Visual, Inc.
- ◆ South Seas Resorts
- ◆ Southwest Florida Eagles
- ◆ Southwest Florida Enterprises
- ◆ SW Florida Professional Golfers Association
- ◆ Southwest Florida Water Environment Association
- ◆ Southwest Florida Workforce Development Board, Inc.
- ◆ Stark Community Foundation
- ◆ Adria and Jerry Starkey
- ◆ Edward V. Staros
- ◆ State Farm Insurance
- ◆ State Farm Mutual Automobile Insurance Company
- ◆ The Rusty Staub Foundation
- ◆ Glenn* and Barbara Steil
- ◆ Saul I. Stern*
- ◆ STH Architectural Group, Inc.
- ◆ Stiles Landscape Company
- ◆ Suncoast Moving & Storage, Inc.
- ◆ Suncoast Schools Federal Credit Union
- ◆ Sunstream Hotels and Resorts
- ◆ Sysco Food Services
- ◆ Taishoff Family Foundation
- ◆ Tampa Bay Trane
- ◆ Taste of Collier
- ◆ Bob and Linda Taylor Foundation
- ◆ Ms. Pamela Templeton
- ◆ TIAA-CREF
- ◆ Dr. and Mrs. Ronald B. Toll
- ◆ The Travel Team, Inc.
- ◆ Truly Nolen
- ◆ *Tween Waters Inn
- ◆ UBS Financial Services, Inc.
- ◆ United States Sugar Corporation
- ◆ US Bank
- ◆ The Vineyards Development Corporation
- ◆ Michael Walker
- ◆ The Walker Contracting Group, Inc.
- ◆ The George R. Wallace Foundation
- ◆ John and Maggie Warfield
- ◆ Jason and Cara Webster
- ◆ Enid Weis
- ◆ Robert Wigley
- ◆ Woodward, Pires & Lombardo, P.A.
- ◆ Woodyard & Associates, LLC
- ◆ Wright Construction Group
- ◆ Michele and Richard Yovanovich
- ◆ Yovanovich Family Charitable Trust

Gold Circle (\$5,000 - \$9,999)

- ◆ Dr. Randall S. Alberte
- ◆ Algenol Biofuels
- ◆ Alico Self Storage, LLC
- ◆ Allstate Bioguard Services Inc.
- ◆ Alvarez Site Development
- ◆ The American Teilhard Association
- ◆ Anixter, Inc.
- ◆ George and Lynn Ankney
- ◆ Anonymous
- ◆ Albert and Ana Arazoza
- ◆ Donald W. Ashley
- ◆ ATP Engineering South, PL
- ◆ Lillian Austin*
- ◆ B & W Golf Cars
- ◆ Linda S. Bacheler
- ◆ Judith E. Baker
- ◆ Pat and William Barton

>> HONOR ROLL OF DONORS

- ◆ Robert J. Batson
- ◆ Mr. & Mrs. Garfield R. Beckstead
- ◆ Cecil C. Beehler
- ◆ Steven and Jean Belcher
- ◆ Evelyn S. Belleman
- ◆ Betty MacLean Travel, Inc.
- ◆ BNL Construction, Inc.
- ◆ Bonita Bay Trianon
- ◆ Bonita Boat Center, Inc.
- ◆ Boran Craig Barber Engel Construction Co., Inc.
- ◆ John D. and Barbara A. Bowlin
- ◆ Bridgetree
- ◆ Brooks & Freund, LLC
- ◆ Drs. Jon and Alice Brunner
- ◆ Curtis D. Bullock
- ◆ Reg and Sandra Buxton
- ◆ Byck-Rothschild Foundation, Inc.
- ◆ Lawrence and Margaret Byrnes
- ◆ Calusa Pines Golf Club
- ◆ Carnes Capital Corporation
- ◆ The Carrington Family
- ◆ Blake A. Carroll - In Memory of Lexton H. Carroll
- ◆ Mary B. Carter
- ◆ Patsy Carter
- ◆ Cavanaugh Capital Management
- ◆ Century 21 Sunbelt
- ◆ Claymore Securities, Inc
- ◆ Cleat, LLC
- ◆ Joseph E. Clouse, Inc.
- ◆ Cocoloba Chapter Florida Native Plant Society, Inc.
- ◆ Coleman, Hazzard & Taylor, PA
- ◆ College Club Apartments
- ◆ Philip and Robin Collier
- ◆ Collier Building Industry Association, Inc.
- ◆ Collier County Produce, Inc.
- ◆ Comcast Financial Agency Corporation
- ◆ Compass Construction, Inc.
- ◆ Connection Point, Inc.
- ◆ Donald C. and Linda Cook
- ◆ Creative Events and Rentals/ Taylor Rental
- ◆ Crowne Plaza Hotel
- ◆ CRS Technology
- ◆ Cummings & Lockwood
- ◆ Dr. Kathleen B. Davey
- ◆ The Family of Evelyn Davis
- ◆ Representative Mike Davis*
- ◆ Richard A. Davis
- ◆ Robert S. Dean
- ◆ Tony and Carol DeLuccia
- ◆ Diamond Equipment, Inc
- ◆ DiamondHead Beach Resort
- ◆ Ronald J. and Arlene Diorio
- ◆ Barbara B. Dobbs
- ◆ Debra Doud
- ◆ Cathy Doyle
- ◆ William Doyle
- ◆ Dr. Lee Duffus
- ◆ Dufrane Jewelers
- ◆ Derek Dunn-Rankin
- ◆ Priscilla Dworak in memory of Dennis Dworak
- ◆ Robert J. and Cornelia C. Eaton
- ◆ The Edgewater Beach Hotel
- ◆ Edison National Bank
- ◆ Enterprise Rent-A-Car
- ◆ Vance and Brenda Ericson
- ◆ Executive Adventures
- ◆ Fewster Enterprises, LLC
- ◆ FGCU Fraternity and Sorority Life
- ◆ First Bank of Clewiston
- ◆ First Community Bank of Southwest Florida
- ◆ Dean and Alice Fjelstul
- ◆ FlexiInternational Software, Inc.
- ◆ Florida Foundation for Future Scientists
- ◆ Florida Gynecologic Oncology/21st Century Oncology
- ◆ Forestry Resources, Inc
- ◆ Joan and John Forkin
- ◆ Fort Myers Christian School
- ◆ George and Barbara Franks
- ◆ Mr. and Mrs. Jeffrey D. Fridkin
- ◆ Frost and Associates, Inc.
- ◆ Woodring M. Fryer
- ◆ Frank H. Galeana, Jr.
- ◆ Gary P. Galleberg
- ◆ William J Gallion Family Foundation Inc.
- ◆ Roberto and Renee Garcia
- ◆ The George R. Gardner Foundation, Inc.
- ◆ Donald Garrett
- ◆ GATES
- ◆ Germain Toyota Scion
- ◆ Global & Americas
- ◆ Global Impact
- ◆ Jennifer Goen
- ◆ Golf & Electric Vehicles, Inc.
- ◆ Gorovoy M.D. Eye Specialists
- ◆ Amy and Peter Gravina
- ◆ Carolyn M. Gray
- ◆ Great Dock Canoe Race, Inc
- ◆ Phyllis Greenberg
- ◆ Guest Services, Inc.
- ◆ Asha and Hem Gupta
- ◆ Hamilton Resources Co.
- ◆ Herbert Handelsman
- ◆ Albert and Sally Hanser
- ◆ Hanser Family Foundation
- ◆ Larry and Mary Hart
- ◆ Health Education Center of SW. Florida
- ◆ Health Management Association
- ◆ H. J. Heinz Company Foundation
- ◆ The Hertz Corporation
- ◆ Holiday Inn Select
- ◆ Earl P. and Majorie L. Holland
- ◆ Dr. and Mrs. Francis L. Howington
- ◆ Huntington National Bank- Private Financial Group
- ◆ Donne Hutcheson
- ◆ Iguana Mia
- ◆ Institute of Financial Education
- ◆ IronStone Bank
- ◆ Elsa Jensen
- ◆ JFK Family Limited Partnership
- ◆ Lewis Johnson and Monica Monahan
- ◆ Dr. Louise Malia Johnson
- ◆ Paul and Susan Jones
- ◆ The Kakkuri Family
- ◆ James H. and Margaret A. Keller
- ◆ Nancy M. Kelso
- ◆ Kingsley Realty, Inc.
- ◆ Kenneth Kirsner
- ◆ Korest Charitable Fund
- ◆ Merrill Kuller
- ◆ LaBelle Grove Management
- ◆ June LaCombe
- ◆ Laird Youth Leadership Foundation, Inc.
- ◆ Bradley Landahl
- ◆ Linda and Kirk Lehtomaa
- ◆ Vee H. Leonard
- ◆ David A. Lewis
- ◆ Lifestyles Chiropractic
- ◆ George A. Llano
- ◆ London Bay Homes
- ◆ Management Communications Consultants
- ◆ Marriott International
- ◆ Ikki and Polly Matsumoto
- ◆ Carl McAloose
- ◆ David and Tammy McQuade
- ◆ J. William and Barbara H. Meek
- ◆ Edward M. Meer
- ◆ Charles Mesloh and Jennifer James-Mesloh
- ◆ MHS Organizational Development
- ◆ Kathleen F. Miller, Ed.D.
- ◆ Mona Lisa
- ◆ Murdock Family Medicine, P.A.
- ◆ My Sports Dreams
- ◆ Naples Area Hotel/Motel Association, Inc.
- ◆ Naples Woman's Club
- ◆ Salvatore Nardello
- ◆ James and Karen Nathan
- ◆ John and Mary-Gail Naylor
- ◆ Mary E. Nevins
- ◆ Mr. and Mrs. William E. Newman
- ◆ Nichols & Associates
- ◆ William F. Noll, III
- ◆ OCI Associates Consulting Engineers
- ◆ Omaha Community Foundation
- ◆ Dave and Judy Osterholt
- ◆ Paradise Advertising & Marketing
- ◆ Robert and Joan Pascotto
- ◆ Passarella and Associates, Inc.
- ◆ Dennis Passini
- ◆ Michele Pessin* and Thomas Gilhooly
- ◆ Mary I. Peterson*
- ◆ Julie and Garrett Peyton
- ◆ PNC Bank, FSF
- ◆ CarolAnn P. Popovich
- ◆ Dave and Arlene Powell
- ◆ Premier Sotheby's
- ◆ Brian and Mary Presley
- ◆ Private Capital Management
- ◆ Private Wealth Consultants
- ◆ G. Jeffrey Provol
- ◆ The Prudential Foundation
- ◆ Drs. J. Robert and Diana Quatroche
- ◆ Brian T. and Melanie B. Rasnick
- ◆ The Recursionist Fund, Inc.
- ◆ Regal Entertainment Group
- ◆ Mary and Rick Reichle
- ◆ Dennis and Cindy Reilley
- ◆ Reynolds, Smith & Hills, Inc.
- ◆ Suzanne Richter
- ◆ Risch Family Foundation
- ◆ Bruce A. Robb
- ◆ Chandler S. Robbins
- ◆ Loren L. and Kimberly A. Roberts
- ◆ Darren Robertshaw
- ◆ Robins, Kaplan, Miller & Ciresi, L.L.P.
- ◆ Dewie and Burt Robinson
- ◆ Roetzel & Andress
- ◆ Jack and Sue Rogers
- ◆ Dr. J. Michael Rollo and Ms. Amy S. Rollo
- ◆ Herbert and Ann Rowe
- ◆ RSM McGladrey, Inc.
- ◆ James and Betty Rubenstein
- ◆ Klaus and Mary Ann Saegerbarth
- ◆ Saint Luke's Church
- ◆ Joan and Michael B. Salke
- ◆ Jerry Schmoyer*
- ◆ Dean E. Schreiner
- ◆ Michael J. and Andrea L. Schroeder
- ◆ Self Insured Plans LLC
- ◆ Severn Trent Services - Moyer
- ◆ Mr. and Mrs. William Shaver
- ◆ Patrick Shean
- ◆ Mr. and Mrs. Karl S. Sheffield
- ◆ The Shell Factory
- ◆ Dr. Joseph and Marcela Shepard
- ◆ Mrs. Mary W. Smith
- ◆ Randy Smith
- ◆ Paul and Paola Snyder
- ◆ Ted Sottong
- ◆ Source, Inc. Engineers-Planners
- ◆ Southeastern Association of State Highway & Transportation Officials
- ◆ South Seas Resorts Co.
- ◆ Southwest Regional Rehabilitation Center
- ◆ Spectator's/Champs
- ◆ Richard W. Steves*
- ◆ Stillwell Enterprises
- ◆ Stoneybrook Community Development District
- ◆ Surety Construction Company
- ◆ Synergy Contractors, Inc
- ◆ Team Construction, LLC
- ◆ TECO Peoples Gas
- ◆ Thalheimers
- ◆ Nola Theiss
- ◆ Thompson Mitsubishi
- ◆ Tilden, Lobnitz & Cooper
- ◆ S. Gregory Tolley and Rebecca Totaro
- ◆ Louise Torri
- ◆ Margaret O. Tunnell
- ◆ Arthur W. Tunnell III
- ◆ United Way of Charlotte County, Inc.
- ◆ University Sports Publications Co., Inc.
- ◆ Urban Land Institute
- ◆ Useppa Inn & Dock Company, Ltd.
- ◆ USSI
- ◆ U.S. Trust Bank of America Private Wealth Management
- ◆ Mary E. Van Arsdale
- ◆ David Vazquez
- ◆ Donna Vazquez
- ◆ Walbridge Aldinger Company
- ◆ Warner M. Washburn
- ◆ Dr. P. A. Washington
- ◆ Waste Management
- ◆ Lee Weeks
- ◆ Suzanne Weinheimer
- ◆ Allen and Marla Weiss
- ◆ Ellen V. P. and Lloyd P. Wells
- ◆ Ludmilla Gricenko Wells
- ◆ Ron White
- ◆ Steven R. and Melissa P. Whitley
- ◆ George J. Wilder
- ◆ William R. Hough & Co.
- ◆ Scott Willis
- ◆ John M. and Martha O. Wolf
- ◆ Wollman, Gehrke & Solomon, PA
- ◆ Phillip and Carole Woods
- ◆ Mr. and Mrs. Rodney I. Woods
- ◆ Bob and Mary Kae Woodworth
- ◆ Workplace Resource of Southwest Florida
- ◆ Worthington Country Club
- ◆ Dr. Bonnie L. Yegidis
- ◆ Roy Young
- ◆ Young Authors Conference

Emerald Circle (\$1,000 - \$4,999)

- ◆ 3M Matching Gift Program
- ◆ AAA Auto Club South

>> HONOR ROLL OF DONORS

- ◆ Mr. Juan L. Abascal & Dr. Daysi Mejia
- ◆ Mr. and Mrs. Don W. Abbott
- ◆ Steven and Mary Paige Abbott
- ◆ Wasif and Leah Abboushi
- ◆ Gary Abernathy and Darlene McCloud
- ◆ Accessible Sports & Recreational Activities Project, Inc.
- ◆ Don E. Ackerman
- ◆ Acousti Engineering Company of Florida
- ◆ Janet L. Adams
- ◆ Adams Bros. Cabinetry, Inc.
- ◆ Mr. and Mrs. Robert C. Adkins
- ◆ ADT Security Services
- ◆ Advanced Management Corporation
- ◆ Advanced Masonry Systems
- ◆ Advisors Asset Management Inc
- ◆ AEC National, Inc.
- ◆ Aetna Construction, Inc.
- ◆ A. G. Edwards & Sons
- ◆ Terry P. and Ann M. Ahola
- ◆ Stewart Aiken
- ◆ John and Susan Akitt
- ◆ Albertson's
- ◆ John and Sarah Jane Alexander
- ◆ Carmen M. Allen
- ◆ Georgia Allen
- ◆ Jack E. Allen
- ◆ Dr. and Mrs. Matthew W. Allen, IV
- ◆ Paul Allen
- ◆ Alliance Financial Group
- ◆ Allison N. Allie
- ◆ Allied Doors, Inc.
- ◆ Mary Allison
- ◆ Allsafe Medical, Inc.
- ◆ Alltel
- ◆ Mr. and Mrs. Arnold R. Alshuler
- ◆ Alternative Investments Resources, Inc.
- ◆ Amalgamated Glass, Inc.
- ◆ American Diabetic Support Group
- ◆ American Engineering & Development Corp
- ◆ Ameripath
- ◆ Harris J. Amhowitz
- ◆ Lawrence J. Amon
- ◆ Dorothy Amphthor
- ◆ Alan and Becky Anderson
- ◆ Basil and Patricia Anderson
- ◆ Donald J. Anderson
- ◆ Penny Anderson
- ◆ Peter Anderson
- ◆ Mr. and Mrs. Richard C. Anderson
- ◆ Robert H. Anderson
- ◆ Susan F. and Donald C. Anderson
- ◆ James R. Andre
- ◆ Christine and Paul Andrews
- ◆ Larry Andrews
- ◆ Anesthesia Associates of Naples
- ◆ Angel Care America
- ◆ Anning-Johnson Company
- ◆ Anonymous
- ◆ Aon Foundation
- ◆ Peggy Apgar' Schmidt
- ◆ Bluma Appel
- ◆ Aqua-Matic
- ◆ Rudolph F. and Lauren J. Aragon
- ◆ Arcadia Amoco
- ◆ ARCO Foundation
- ◆ Aristocrat Golf Company, Inc.
- ◆ Tyler Armstrong
- ◆ Carmen Arteaga
- ◆ Kenneth A. Aschom
- ◆ ASHRAE Southwest Florida Chapter
- ◆ Mark Asperilla
- ◆ Associates in Entrepreneurship Education
- ◆ Association of Schools of Allied Health Professions
- ◆ Ken Atkinson
- ◆ Audrey's Attic & Annex
- ◆ Audubon Society of Southwest Florida, Inc.
- ◆ Lee A. Augsburg
- ◆ William W. Ausbon
- ◆ AvMed, Inc.
- ◆ Dr. Ahmad F. Azam
- ◆ Azar Gallery Oriental Rugs
- ◆ Azul Cosmetic Surgery and Medical Spa
- ◆ Dr. Robert G. Bachand
- ◆ Jennifer Baeza
- ◆ Francis and June Bailey
- ◆ Bailey's General Store
- ◆ Jay H. and Patti Baker
- ◆ Armand and Beverly Ball Family Foundation
- ◆ David and Karrie Balza
- ◆ Bank of America Matching Gift Program
- ◆ The BankAtlantic Foundation
- ◆ Bank One, NA
- ◆ Mary B. Banks
- ◆ Banks Engineering, Inc.
- ◆ Marsha Bankston
- ◆ Baring Industries
- ◆ Edward E. Barr
- ◆ Fredric M. Barr
- ◆ Lilian Barroso
- ◆ Dr. and Mrs. Carey N. Barry
- ◆ Brad N. Bartel
- ◆ Basil Street Partners, LLC
- ◆ Debra Bauman
- ◆ Susan, Scott and Andrew Baurer
- ◆ BCH Mechanical, Inc
- ◆ John R. Beal
- ◆ The Beaux-Arts Group of Florida, Inc - Fort Myers
- ◆ Jerry and Sue Beaver
- ◆ Bechtel Financial Services Inc
- ◆ Mort Beck
- ◆ Samira Kanaan Beckwith
- ◆ Norman and Nancy Beecher
- ◆ The Hector E. Beeken Family
- ◆ Arnold Bell
- ◆ Karen Bell
- ◆ Bentley Electric Company, Inc.
- ◆ Mario Bernardo
- ◆ Dr. and Mrs. Harold Berris
- ◆ Berry, Day & McFee, P.A.
- ◆ Best Buy
- ◆ Tom and Sandy Betts
- ◆ Phillip and Mary Beuth
- ◆ Dr. Sharon Irish Bevins
- ◆ Thomas Bevins
- ◆ Cindy M. and Sam F. Bianchi
- ◆ Reinhard and Trish Biebricher
- ◆ Alan and Leslie Bielen
- ◆ Robert W. Biggs
- ◆ Mr. Larry Bird
- ◆ Dr. and Mrs. James D. Blagg, Jr.
- ◆ Howard and Susan Blank
- ◆ The Blankenship Family
- ◆ Bleu Provence Restaurant
- ◆ Les and Sue Blumberg
- ◆ In Memory of Herman O Bly
- ◆ BNY Mellon Wealth Management
- ◆ Robert E. Boardman
- ◆ Bill and Cheryl Bogard
- ◆ Nancy and Steven Bolander
- ◆ Glen and Lonnie Bomberger
- ◆ Bond, Schoeneck & King, P.A.
- ◆ Bonita Springs Lions Charities Inc
- ◆ Dr. and Mrs. Gary Bonvillian
- ◆ Jane Bopp
- ◆ Jane E. and Richard J. Borchers
- ◆ Nelson Bordeaux, Jr.
- ◆ Nico Borgia
- ◆ Rick and Lori Borman
- ◆ Mr. and Mrs. Sam Borr
- ◆ Boston's on the Beach
- ◆ Alex and Debbie Boswell
- ◆ Stefan and Jennie Bothe
- ◆ Paul T. Boudreaux
- ◆ Daniel and Laura Bourdeau
- ◆ Bowman Internet Systems, LLC
- ◆ Bradanna, Inc.
- ◆ H. Lien Bragg
- ◆ Mr. and Mrs. Edward Bransilver
- ◆ Steven Brettholtz
- ◆ Sherie L. Brezina
- ◆ Brickman
- ◆ BrickTop's
- ◆ Kathy Bridge-Liles
- ◆ Brighton Hotel, LLC
- ◆ Norma Bristol
- ◆ Dick Broadus
- ◆ Brodeur Custom Clothiers
- ◆ Bronzart Foundry, Inc.
- ◆ Mr. and Mrs. Stephen Brooks
- ◆ Brookside Holdings, LLC
- ◆ Brown & Brown Insurance
- ◆ Mr. and Mrs. Leighton G. Brown
- ◆ Linda L. Brown, ARNP, MSN
- ◆ Wendell and Betty P. Brown
- ◆ Mr. and Mrs. Harold Brownstein
- ◆ BRPH Architects & Engineers, Inc.
- ◆ Michael J. Bruce
- ◆ Dr. Robert Brueck
- ◆ Al and Georgia Bruggemeyer
- ◆ Isaac and Debra Brundage
- ◆ Douglas Brunner
- ◆ J. Michael and Teresa L. Bruno
- ◆ Dr. and Mrs. John S. Bruno
- ◆ Chuck and Dee Bryan
- ◆ Linda L. Buettner Ph.D. CTRS
- ◆ James W. and Barbara J. Burkett
- ◆ Wanda Burkey
- ◆ Kevin Burns
- ◆ Dr. and Mrs. Robert L. Burns
- ◆ Chrysten Burzio
- ◆ Terry and Debbie Busson
- ◆ Dr. and Mrs. David R. Butcher
- ◆ Dr. and Mrs. John T. Butler
- ◆ Deva Caanhan
- ◆ Cabela's, Inc.
- ◆ Cadence Music, Inc.
- ◆ Anthony and Karen-Butler Cahill
- ◆ Susan Cameron
- ◆ Camp, Dresser & McKee, Inc.
- ◆ Larry D. and Sandra Gail Campbell
- ◆ Stephen Campbell
- ◆ William Campbell
- ◆ Campiello's
- ◆ Cape Coral Community Foundation
- ◆ Capital Insurance Agency, Inc.
- ◆ Captiva Island Inn Bed & Breakfast
- ◆ Michael J. Carlin
- ◆ Carlson Harris General Contractors, Inc.
- ◆ Constance B. Carmody, ARNP
- ◆ Shirley and Jim Carpenter
- ◆ William M. Carpenter
- ◆ Carpet Outlet
- ◆ James and Susan S. Carr
- ◆ Carrabba's Italian Restaurant
- ◆ Carrollton Mill Services, LLC
- ◆ Dr. Cecil Carter
- ◆ Dr. Jack C. Carver
- ◆ Darryl C. Casanueva
- ◆ Case Companies, Inc.
- ◆ CBL & Associates
- ◆ Cement Industries, Inc.
- ◆ CH2M HILL
- ◆ The Chamber of Southwest Florida
- ◆ Championship Field Construction, Inc.
- ◆ Marilyn L. and H. Clayton Chandler
- ◆ Tina and Bob Chaphe
- ◆ Dr. and Mrs. Nelson Charles
- ◆ Charlotte Sanitation
- ◆ Charlotte State Bank
- ◆ Milo E. Chelovitz
- ◆ Cherry & Edgar, P.A.
- ◆ Ruth S. Childe
- ◆ Chris-Tel Company of Southwest Florida Inc
- ◆ Dr. Lois R. Christensen
- ◆ Cynthia J. Christman
- ◆ Lloyd A. Chung
- ◆ Dr. Pauline Chusid
- ◆ Patrick Ciniello
- ◆ Cintas Corporation
- ◆ George and Linda Ciprich
- ◆ Eleanor Claiborne
- ◆ Andrea Clark Brown
- ◆ Karen and Bradley* Clark
- ◆ Classic Basketball, Inc.
- ◆ The Club at Mediterra
- ◆ The Club at Naples Bay Resort
- ◆ Richard M. Clugston
- ◆ COA
- ◆ Coastal Engineering Consultants, Inc.
- ◆ Cohen & Grigsby, P.C.
- ◆ Barbara B. and Kevin G. Coleman
- ◆ Collier Neurologic Specialists, LLC
- ◆ Dr. and Mrs. E. F. Collins
- ◆ Dean C. Colson
- ◆ Columbia Fawcett Memorial Hospital
- ◆ Columbia Healthcare's Lee County Network
- ◆ Richard D. and Elizabeth R. Colvin
- ◆ Mrs. James Comer
- ◆ Comerica
- ◆ Comfort Inn of Bonita Springs
- ◆ Community Bank of Naples
- ◆ Community School of Naples
- ◆ Confrerie de la Chaine des Rotisseurs Foundation
- ◆ Lynn and Ken Congdon
- ◆ Dave and Jane Conner
- ◆ Consolidated Pipe and Supply Co, Inc.
- ◆ Construction Advisors
- ◆ Continental Construction
- ◆ David L. Cook
- ◆ Mr. and Mrs. Francis J. Coomes
- ◆ Coopers & Lybrand
- ◆ Mr. and Mrs. David L. Copham
- ◆ Valerie Corace
- ◆ Coral Hospitality
- ◆ Donald and Mary Corcelli
- ◆ Coreslab Structures
- ◆ Don and Barbara Corll
- ◆ Armand and Barbara Cornellier
- ◆ James R. Cote
- ◆ Country Creek Community Charities
- ◆ Courtyard Fort Myers Gulf Coast Town Center

>> HONOR ROLL OF DONORS

- ◆ Miller and Toni Couse
- ◆ Covanta Energy
- ◆ Jane A. Cox
- ◆ Rachel Cox
- ◆ The Crabill Family
- ◆ Wayne Craven
- ◆ Cherrill L. and Dick Cregar
- ◆ Aileen B. Cripps
- ◆ Dr. W. Jack Crocker
- ◆ Amanda B. Cross
- ◆ Crowther Facility Services
- ◆ Louis and Louan Crumbly
- ◆ CTI/BERK-TEK/ORTRONICS
- ◆ Culligan Water Conditioning
- ◆ Mr. and Mrs. Norman H. Curtis
- ◆ Custom Welding & Fabrications, Inc.
- ◆ C.W. Smith Imported Antiques
- ◆ Cypress Chapter IWLA
- ◆ Cypress Cove at HealthPark Florida
- ◆ Dade Behring
- ◆ Mimi Daitz
- ◆ David J. Dale
- ◆ Dr. Jeanie Darnell
- ◆ James D. Dati
- ◆ Daughters of the American Revolution - Florida State Society
- ◆ Dave Foote Environmental Construction
- ◆ David Leas Insurance Services, Inc.
- ◆ Dick and Trish Davidson
- ◆ Angela L. Davis
- ◆ Carol E. Davis
- ◆ Ken and Ruth Davis
- ◆ Wallace L. Dawson
- ◆ D.C. Noon, LLC
- ◆ Mr. and Mrs. Frederick A. Deal
- ◆ Michael G. DeGroot
- ◆ Fernando and Kimberly Del Dago
- ◆ William Delayo
- ◆ Delisi Fitzgerald, Inc.
- ◆ Dr. Lena A. Delisser-Matthews
- ◆ Delta Painting, Inc.
- ◆ Bob DeMao
- ◆ Howard and Helen DeMartini
- ◆ Demko Vending Food Service Management, Inc.
- ◆ Betty Ann Denholtz Memorial Scholarship Fund
- ◆ Ruth B. Denholtz
- ◆ Bill and Susan Dennis
- ◆ Terry Dennis
- ◆ Denture & Dental Center
- ◆ John C. Deppman and Clara Yu
- ◆ Cynthia L. and William J. Deragon
- ◆ Thibaut De Saint Phalle
- ◆ Cathy C. and Andrew P. DeSalvo
- ◆ Desanzo Charitable Foundation
- ◆ Virginia P. and Edward H. Devine, III
- ◆ DeVoe Cadillac
- ◆ Ned Dewhirst
- ◆ Erik and Nancee Dickens
- ◆ Caroline Dickinson
- ◆ Nan L. Dietrich
- ◆ Janet and Robert Diotalevi
- ◆ Dr. and Mrs. Frank Diplacido
- ◆ Distinctive Communities
- ◆ Diversified Conference Management, Inc.
- ◆ Chris Dixon
- ◆ Duane and Joyce Dobbert
- ◆ Patricia K. and Wesley W. Dobbins
- ◆ Dominos Pizza
- ◆ Charles J. Donches
- ◆ Eileen M. Dondero
- ◆ Richard Dondero



Scholarship recipient Carlos Rubiano and Judy Sproul at the 2010 President's Scholarship Luncheon.

- ◆ Rebecca Donlan
- ◆ Larry P. and Mary A. Donovan
- ◆ Dooley & Mack Constructors, Inc.
- ◆ Carolyn Douglas
- ◆ The Dow Chemical Company Foundation
- ◆ Doyle Conflict Resolution, Inc.
- ◆ Robin and Kris Doyle
- ◆ Peter Droescher
- ◆ Michael Duever
- ◆ Cathy and John Duff
- ◆ Mrs. Barbara Dufrane
- ◆ Robert L. DuGene*
- ◆ Don Duke and Jill Barnes
- ◆ Joann and Marty Duncan
- ◆ Richard Dundee
- ◆ Edward Dunlap
- ◆ East Indies Trading Company
- ◆ East Pointe Hospital Auxiliary
- ◆ Mr. and Mrs. Mark Eastman
- ◆ Dr. Karen Eastwood*
- ◆ Dr. and Mrs. Charles Eby
- ◆ Eden Autism Services
- ◆ Jodi C. Edens-Crocker
- ◆ Edison Festival of Light, Inc.
- ◆ EHC, Inc.
- ◆ Ellen K. Edmeades
- ◆ The Education Foundation of Collier County
- ◆ Edward Don & Company
- ◆ Robert T. Edwards
- ◆ Maryan and Arnold Egan
- ◆ Wilbur and Kate Eichler
- ◆ Steve W. Eisenberg
- ◆ Elcon Electric Incorporated
- ◆ James Eldridge
- ◆ Elias Brothers Communities Management, Inc
- ◆ Elite Cabinetry Inc.
- ◆ Sue D. Ellis
- ◆ David A. and Jacqueline A. Emma
- ◆ Endo Pharmaceuticals Inc.
- ◆ Energenics Corporation
- ◆ Ennis, Knupp and Associates, Inc
- ◆ EnSite
- ◆ Enterprise Charlotte Foundation, Inc.
- ◆ Enterprise Leasing Company
- ◆ Enterprise Rent-A-Car Foundation
- ◆ Erickson Herscoe De Stefano & Partners
- ◆ Steven and Jan Erickson
- ◆ Christina Esson
- ◆ Estero Bay Buddies, Inc.
- ◆ Estero High School
- ◆ The Estes Family
- ◆ Amanda Evans
- ◆ Andrew Evans
- ◆ Fred and Judy Evans
- ◆ George and Joan Exner
- ◆ Extreme Networks
- ◆ Extreme Turf, Inc.
- ◆ The Ezzell Family
- ◆ Falls River Group
- ◆ FAU, Department of Educational Leadership
- ◆ Carl Fazio, Jr
- ◆ Mrs. J. H. Fears
- ◆ Feasinomics
- ◆ Gwen H. Feather*
- ◆ Fed Ex
- ◆ Karen Feldman
- ◆ Jack Fenwick
- ◆ Andrew Ferrari
- ◆ Thomas G. and Barbara Fewster
- ◆ Thomas G. and Beverly Fewster
- ◆ Fidelity National Title
- ◆ Dr. and Mrs. John S. Fifer
- ◆ Fifty/50 Floral Art
- ◆ Dr. and Mrs. Matthew J. Fineman
- ◆ Fireservice, Inc.
- ◆ Lynda R. Firment, Ph.D., A.R.N.P.
- ◆ First Class Coach Company
- ◆ First International Financial Corp.
- ◆ First National Bank
- ◆ First National Bank of Chicago Foundation
- ◆ First Union National Bank Foundation
- ◆ Fish Tale Sales & Services at Fish Tale Marina
- ◆ Fishel & Dowdy Jeweler
- ◆ Fisk Electric Company
- ◆ James G. Fitzgerald
- ◆ Florida Architects, Inc.
- ◆ Florida Association of Mortgage Brokers

- ◆ Florida Bay Communities
- ◆ Florida Endangered Wildlife, Inc.
- ◆ Florida Engineering Foundation, Inc.
- ◆ The Florida Everblades
- ◆ Florida Environmental
- ◆ Florida Foundation for Responsible Angling, Inc
- ◆ Florida Gulf Bank
- ◆ The Florida Gulf Coast Group
- ◆ Florida Hospices and Palliative Care, Inc.
- ◆ Florida Nurses Assoc., Dist. #7
- ◆ Florida Nurses Association District 29
- ◆ Florida Rock Industries, Inc.
- ◆ Florida Watercolor Society
- ◆ Florida Wildlife Federation
- ◆ Paul* and Aline Flynn
- ◆ Susan N. Fohs
- ◆ Food Services, Inc.
- ◆ William and Martha Forbes
- ◆ Mr. and Mrs. Willis E. Forsyth
- ◆ Fort Myers High School
- ◆ Fort Myers Lee County Garden Council, Inc.
- ◆ Fort Myers Public Library, Inc.
- ◆ Fort Myers Rod & Gun Club, Inc.
- ◆ Richard G. and Charlotte F. Foster
- ◆ Frank and Judy Fought
- ◆ Claiborne and Ned Foulds Foundation
- ◆ Foundation for Academic Educators, Inc.
- ◆ Foundation for Geriatric Education
- ◆ James N. Fox
- ◆ Francis Engineering, Inc.
- ◆ Anthony and Melissa Franco
- ◆ J. M. (Jerry) Franklin
- ◆ Michelle Frederick
- ◆ Eugene and Mary Frey
- ◆ Doris Fritcher
- ◆ Chas and Laurie Fritz
- ◆ Mr. and Mrs. J. Fritz
- ◆ Terri Fritz
- ◆ Frost Group Realtors
- ◆ G.C. Building Products
- ◆ Lamar Gable
- ◆ Bruce and Karen Galbraith
- ◆ James and Lydia Galton
- ◆ Mr. and Mrs. Stowe T. Gardner
- ◆ N. T. Gargiulo LP
- ◆ Garvin & Tripp
- ◆ Gatewood Glass
- ◆ The GE Fund
- ◆ E. James Geater
- ◆ Emory and Donna Geller
- ◆ Bodil and George Gellman
- ◆ Tina Marie Gelpi
- ◆ Geraci Travel
- ◆ Joyce and Paul Gerber
- ◆ German American Club - Harmonie
- ◆ Shirley K. Gerstenberger
- ◆ Marc and Geraldine Gertner
- ◆ The Gettys Group, Inc.
- ◆ GFWC Florida Federation of Women's Clubs
- ◆ Frank L. and Donna M. Giannuzzi
- ◆ Muffy Clark Gill
- ◆ John R. Gillette
- ◆ David and Joan Glacken
- ◆ Glase Golf Craft
- ◆ Helen Glass
- ◆ Glenview at Pelican Bay
- ◆ John W. Gnagey
- ◆ Thomas P. Goff
- ◆ Dr. and Mrs. Jacob H. Goldberger
- ◆ Maureen Golden
- ◆ Golden Key National Honor Society

>> HONOR ROLL OF DONORS

- ◆ Francine Gomberg
- ◆ Mr. and Mrs. Dudley Goodlette
- ◆ Barbara M. Goodbody
- ◆ Michael A. Gookin
- ◆ Gora/McGahey Associates in Architecture
- ◆ Janet L. and Gregory F. Gordon
- ◆ Dr. and Mrs. Tom W. Gore
- ◆ Dennis Gormley
- ◆ Phyllis and George Gotschall
- ◆ Tom Grady
- ◆ Mr. and Mrs. Thomas C. Graham
- ◆ Grande Oak Development
- ◆ Don and Kathy Grandi
- ◆ Ruth T. Grandin
- ◆ Billy D. Grant
- ◆ Michael Grant
- ◆ Mr. and Mrs. Wallace M. Graves
- ◆ James and Amber Greco
- ◆ Bruce Green
- ◆ The Family Green
- ◆ Jackie S. Greene
- ◆ Robert V. and Marcia M. Greene
- ◆ Susan Greiner
- ◆ Dr. and Mrs. Glen E. Gresham
- ◆ James and Christina Grote
- ◆ David Grunberg
- ◆ John and Nancy Guerra
- ◆ Gulf Bay Communities
- ◆ Gulf Bay Group of Companies
- ◆ Gulf Citrus Growers Association
- ◆ Gulfcoast Coin & Jewelry Brokers
- ◆ Gulf Disposal, Inc.
- ◆ GulfPoint Construction Company
- ◆ June Gutknecht
- ◆ Guymann Construction of Florida, Inc.
- ◆ R. F. Haffenreffer, IV and Mallory K. Marshall
- ◆ Dr. and Mrs. J. Stewart Hagen
- ◆ Hahn Loeser & Parks LLP
- ◆ Sven Hahues
- ◆ David and Gail Hall
- ◆ Larry and Judy Halpin
- ◆ Hamilton Harbor Marina, Inc.
- ◆ Mr. and Mrs. Kenneth Hamming
- ◆ Hampton - Inn Naples I-75
- ◆ William W. Hansell
- ◆ Harlan S. and Ruth Hansen
- ◆ Stanley and Louise Hardy
- ◆ Bette Harig, M.D.
- ◆ Patricia M. Harig
- ◆ Mr. and Mrs. John H. Harkins
- ◆ Edward and Diane Harlyvetch
- ◆ Harmonized Customs Brokers, Inc.
- ◆ Dr. and Mrs. Thomas C. Harrington
- ◆ Chief Robert and Mrs. Nancy Harris
- ◆ Sam and Judi Harris
- ◆ Harris Bank
- ◆ M. Hart
- ◆ Barry* and Carol Hastings
- ◆ Peter O. and Alice E. Hausmann
- ◆ Timothy Haw
- ◆ Elaine Hawkins
- ◆ Adrienne M. Hayes-Jones
- ◆ Hayward Baker Inc.
- ◆ Hazelbaker Foundation
- ◆ HDG Communities
- ◆ Health Resources Corporation
- ◆ HealthPark
- ◆ David Heald
- ◆ Tom and Jan Healy
- ◆ Erik Heben
- ◆ Jim and Jade Hehl
- ◆ Mr. and Mrs. Robert L. Heidrick
- ◆ The Heins Family
- ◆ Dr. Gene W. Hemp
- ◆ William M. Hendricks Family Foundation
- ◆ Brian and Elaine Henry
- ◆ Leo Hertzog
- ◆ Ruth and Douglas Hester
- ◆ Julie Heuer
- ◆ Charles C. Hewitt, Jr.
- ◆ Jack and Marjorie Highfield
- ◆ Michael D. and Deborah S. Highfield
- ◆ Maurice* and Marie Hillmyer
- ◆ Hilton Marco Island Beach Resort
- ◆ Emil G. Hirsch
- ◆ Donald R. and Carolyn Hodges
- ◆ Robert F. Hoel, Jr.
- ◆ Ernst W. B. Hoen
- ◆ Hollywood Woodwork, Inc.
- ◆ Mildred B. and Albert M. Holtz
- ◆ Rhonda J. Holtzclaw
- ◆ Madeline and Scott Holzem
- ◆ Charles B. and Audrey K. Hood
- ◆ The Hopkins Family
- ◆ Jeanne M. Hopple
- ◆ Jeffrey S. Horne
- ◆ J. Webb Horton
- ◆ Mrs. Jeffrey R. Hossler
- ◆ Charles and Barb Hostetler
- ◆ Richard and Jennifer Housh
- ◆ Sherree Houston
- ◆ Elaine Hozdik
- ◆ Adrian Hudler
- ◆ Dr. and Mrs. Bennett Hudson
- ◆ Dr. and Mrs. Bruce Hudson and Nathan Hudson
- ◆ Mr. and Mrs. Gareth K. Hudson - In Memory of Julian L. Hudson
- ◆ Hughes, Snell & Company, P.A.
- ◆ Dottie Hummel
- ◆ Nancy Humphrey
- ◆ Humphrey-Rosal Architects
- ◆ George Hunt
- ◆ Larry I. Hunt
- ◆ Hunter Douglas Hospitality
- ◆ Dr. Marguerite Hutchins
- ◆ Hypower
- ◆ IAS Hotel, LLC
- ◆ IBM Matching Grants Program
- ◆ Ikon
- ◆ Inside Out
- ◆ Insurance & Risk Management Services, Inc.
- ◆ IntelliNet
- ◆ International Services Center, Inc.
- ◆ IPB Development, LLC
- ◆ Dr. Madelyn Isaacs and Chris Smith
- ◆ David Ivankovic
- ◆ J. & D. Grading, Inc.
- ◆ JFK & Associates, Inc.
- ◆ JJB Management & Consulting, Inc.
- ◆ J. J. Taylor Distributing Fort Myers-Naples, Inc.
- ◆ J. L. Wallace, Inc.
- ◆ Lynda Jack
- ◆ Jerome A. and Bette J.S. Jackson
- ◆ David and Donna Jaeger
- ◆ Roger W. and Donna W. Jaeger
- ◆ Jeffrey Estate & Precious Jewels
- ◆ Jenks Builders, Inc.
- ◆ Jensen Underground Utilities, Inc.
- ◆ George and Philomena Johanssen
- ◆ John Madden Company
- ◆ John R. Wood, Inc. Realtors
- ◆ Claire and George Johnson
- ◆ F. Edward Johnson
- ◆ Gary and Teresa Johnson
- ◆ Michael Johnson
- ◆ Rick and Catherine Johnson
- ◆ Johnson & Wales University
- ◆ Otis L. Jordan*
- ◆ Ken and Rita Jorgensen
- ◆ J.S.U.B., Inc.
- ◆ KBS Capital Markets Group
- ◆ K C Stock Foundation, Inc.
- ◆ Dr. Abbott Kagan II
- ◆ Scott L. Karakas
- ◆ Selma S. Katzen
- ◆ Ken and Mary Kavanagh
- ◆ H. C. Kazanas, Ph.D.
- ◆ Nick Kellen
- ◆ Mr. and Mrs. Daniel N. Keller
- ◆ William G. and Lois E. Kelley
- ◆ Richard C. Kennedy
- ◆ Peter Kent
- ◆ Chuck and Helen Ketteman
- ◆ Kevin L. Erwin Consulting Ecologist, Inc.
- ◆ Kevin M. Burns & Associates, P.A.
- ◆ Key Foundation
- ◆ KeyCorp
- ◆ Mr. and Mrs. James W. Keyser
- ◆ Key Western Grille
- ◆ Mr. and Mrs. Donald A. Kiah
- ◆ Donald R. Kielgas
- ◆ Kevin D. Kiley, D.D.S.
- ◆ The Lou Kirk Family
- ◆ Kirkwood Electric
- ◆ Kathryn A. Kleist
- ◆ Charles Kleman
- ◆ Priscilla P. Kluckhuhn
- ◆ Knott & Consoer P.A.
- ◆ Maria Koenig
- ◆ Robert A. Koenig
- ◆ Judith A. Koppelman
- ◆ Gloria Korman
- ◆ Mary J. Koskinas
- ◆ Matthew Kragh
- ◆ Mr. and Mrs. Thomas Krick
- ◆ Michele Kroffke
- ◆ Mrs. Richard B. Kron
- ◆ Edward and Linda Krukowski
- ◆ George A. Krumenacker
- ◆ Margaret and Robert A. Kruse
- ◆ Leila LaCrosse
- ◆ Janet and Dan La Mountt
- ◆ George W. and Barbara J. Landgrebe
- ◆ Landmar Group, LLC
- ◆ Dr. Barry E. Langford
- ◆ L.A.T. Foundation
- ◆ Dean Lauritzen
- ◆ Dr. Brenda B. Lazarus
- ◆ Thomas C. Leduc
- ◆ Lee Building Industry Association, Inc.
- ◆ Lee County Community Tennis Association, Inc.
- ◆ Lee County Hotel & Motel Association, Inc.
- ◆ Lee County Port Authority
- ◆ The Jim Lee Family
- ◆ Lee Memorial Emergency Physicians
- ◆ Lee Memorial Home Health
- ◆ Dr. and Mrs. Peter C. Lefferts
- ◆ Judith Hudson Lefkowitz, Meredith
- ◆ Hudson Marcum, Gareth Kingsbury
- ◆ Hudson and Bruce Wyeth Hudson, M.D.,
- ◆ Elise P. Lehman
- ◆ Thomas A. Leipzig
- ◆ Robert and M Kathleen Leitch
- ◆ Mr. and Mrs. Willi Lerner
- ◆ Nancy O. and Donald W. Leshner
- ◆ Clark R. and Karen B. Lewis
- ◆ Gordon and Susette Lewis
- ◆ Mr. and Mrs. Phil Lewis
- ◆ Lexus of Fort Myers
- ◆ Liberty Mutual Insurance Co.
- ◆ David and Sunny Liddell
- ◆ Martha Lieb-Cox
- ◆ Jack W. Liebert
- ◆ Lloyd N. Liggett
- ◆ Laird A. and Laurie D. Life
- ◆ Patricia Limegrover and Max Furbringer
- ◆ Joan and Andy Lindauer
- ◆ Nilda and Harry W. Lindsay
- ◆ Dr. and Mrs. Morris J. Lipnik
- ◆ Stephen Lippens* and Nancy Cobb-Lippens
- ◆ Carol Jean Locke
- ◆ Looking Glass Studio of Tattoo
- ◆ Garry and Suzanne Long
- ◆ Jack and Pat Long
- ◆ Jorge and Carol Lopez
- ◆ Helen Lord
- ◆ Lotspeich Company of Florida, Inc.
- ◆ Dr. and Mrs. Gary Lounsberry
- ◆ The David A. Lounsbury Family
- ◆ Lowes Charitable & Educational Foundation
- ◆ Lucas Century Glass Company
- ◆ Brian D. and Melinda L. Lucas
- ◆ Max Lummis
- ◆ Luna Rossa Mediterranean Bistro
- ◆ Mr. and Mrs. Thomas C. Lund
- ◆ Henry and Suzanne Lurie
- ◆ Elizabeth H. Lush
- ◆ Lutgert Insurance
- ◆ Kurt Lutgert
- ◆ Lawrence E. Lykins
- ◆ William R. and Barbara J. Lymangood
- ◆ James S. and Claire H. Lynch
- ◆ M.C. Johnson Co, Inc.
- ◆ M & P Reynolds Enterprises, Inc.
- ◆ Robert J. and Mariann T. MacDonald
- ◆ Mary and J Hugh MacKellar
- ◆ Trevor MacKellar
- ◆ Eila and Rod MacKenzie
- ◆ Marjorie and John Madden
- ◆ Maddox Construction Co
- ◆ Major League Baseball Players Trust for Children
- ◆ Mark Makara
- ◆ James and Linda Malone
- ◆ Miriam and Sonny Mandell
- ◆ Manhattan Construction Company
- ◆ David B. and Tina M. Mantel
- ◆ John Marazzi
- ◆ March of Dimes
- ◆ Mr. and Mrs. Edward S. Marco
- ◆ Marco Island Concert Choir
- ◆ Douglas Marcotte
- ◆ Camille and Sabino Marinella
- ◆ Paul* and Joan Marinelli
- ◆ Mariner Properties Development, Inc.
- ◆ Martha H. and William J. Marland
- ◆ Marsh Consumer Connexions
- ◆ Dr. Helen L. Mamarchev
- ◆ Joan Manley and Kit Bauman
- ◆ Marriott's Crystal Shores
- ◆ Richard J. Marsh
- ◆ Daniel and Janet Martin
- ◆ Linda and John Martin
- ◆ Martin Weston Co.
- ◆ Ingrid Martinez-Rico and Craig W. Heller

>> HONOR ROLL OF DONORS

- ◆ Mr. and Mrs. R. A. Mascott
- ◆ Richard Maslow
- ◆ Matern Professional Engineering, Inc
- ◆ Mathews Construction
- ◆ Matthew W. Mathias
- ◆ Richard and Marianne Matties
- ◆ The Mattingly Family
- ◆ Dr. and Mrs. M. E. Mattingly
- ◆ Craig and Deb Matus
- ◆ Dr. Ingeborg G. Mauksch*
- ◆ Tom and Sara Mayo
- ◆ Linda L. McAlister
- ◆ Tim and Kelly McCarthy*
- ◆ Dee and Speed* McClay
- ◆ Vikki McConnell
- ◆ Robert W. McCoy, Jr.
- ◆ Jacke and Arden McCurdy
- ◆ Gerald C. and Helen M. McDonough
- ◆ Deborah King McEwan
- ◆ Johnny E. McGaha
- ◆ Rose McGahee
- ◆ Gordon McGee*
- ◆ Dr. James A. and Joan P. McGee
- ◆ Dr. and Mrs. William McGrady
- ◆ Thomas and Desiree McGuire
- ◆ Melissa McIntosh
- ◆ Helen L. McIntyre
- ◆ McIntyre Properties, LLC
- ◆ Mr.* and Mrs. Jack H. McKenzie
- ◆ Charles and Lil McKinney
- ◆ W. Thom and Vicki McKinney
- ◆ Michael McLauchlan
- ◆ Peter D. and Anne M. McLeod
- ◆ John F. McMillen
- ◆ Edward P. McNamara
- ◆ Pete and Deborah McNeal
- ◆ John and May McShane
- ◆ Donna S. McVety, R.N., Ph.D.
- ◆ Mecca Resources, Inc.
- ◆ Robert Meister
- ◆ Norm Melious
- ◆ Mello Concrete Service, Inc.
- ◆ Merrill Gardens at Naples
- ◆ Merson, Sawyer, Johnson, Dunwody & Cole
- ◆ Charles L. Meyers
- ◆ Michael R. Smith and Associates, Inc.
- ◆ George and Madeleine Michaels
- ◆ Larry and Linda Mignerey
- ◆ Ken and Pat Millar
- ◆ Jack D. Miller
- ◆ Jill and Steve Miller
- ◆ Mr. and Mrs. T. Wainwright Miller, Jr.
- ◆ Edward and Valerie Milliken
- ◆ William Mills
- ◆ Karen N. Mock
- ◆ Helen V. Moe*
- ◆ Moe's Southwest Grill
- ◆ Dr. and Mrs. L. C. Mogelvang
- ◆ Molzan & Gray Properties
- ◆ Manuel Mon
- ◆ Monarch Mortgage Group Inc.
- ◆ Deborah Moore
- ◆ Harold D. Moore
- ◆ Dave P. Moran
- ◆ Michael J. Morgan
- ◆ Sandra Morgan
- ◆ Morgan Stanley Matching Gifts Program
- ◆ Wendy Morris
- ◆ Cyndy Peacock and Roger F. Morrison
- ◆ Morton Wasmer Abraham Construction Managers LLC
- ◆ Mosaic
- ◆ Ellen W. Mosher
- ◆ Moss and Associates
- ◆ Elizabeth Mossman
- ◆ K. Mark Mottolese
- ◆ Movin' On Mobility
- ◆ The Mowreys
- ◆ MTM Ice 1, LLC
- ◆ John Scot Mueller
- ◆ Mr. and Mrs. William J. Mueller
- ◆ Emilio M. Mufdi
- ◆ Rima and Edward Mullins
- ◆ Catherine P. Mummert
- ◆ James P. Murphay
- ◆ Donald and Elizabeth Murray
- ◆ Mr. and Mrs. Michael Murray
- ◆ Multiple Activity Computing
- ◆ MWASTE, Inc
- ◆ Myerlee Medical Association
- ◆ Lewis Myers
- ◆ Myra and Philip* Nalibotsky
- ◆ Naples Asset Management Co., LLC
- ◆ Naples Music Club
- ◆ Naples Council On World Affairs, Inc.
- ◆ Naples Pathology Associates, PA
- ◆ Naples Shore Fund in honor of Betty Ford
- ◆ Naples Zoo
- ◆ Napoleon Financial Group
- ◆ Ian T. and Diane M. Nathanson
- ◆ National Association of Health Education Centers
- ◆ National Construction Rentals, Inc.
- ◆ Mike and Kay Nearing
- ◆ Donald Nelson
- ◆ Ralph and Marge Nelson
- ◆ Diana Nerestant*
- ◆ Jim and Donald Nettis
- ◆ NEV 2/11 Foundation
- ◆ Dr. and Mrs. Douglas Newland
- ◆ NewsBank
- ◆ The New York Community Trust
- ◆ New York Moves LLC
- ◆ William F. Niedernhofer
- ◆ C. W. Nimitz, Jr.
- ◆ James and Pam Nolte
- ◆ Thomas J. and Elizabeth B. Nomina
- ◆ North Fort Myers High School
- ◆ Northside Naples Kiwanis Foundation, Inc
- ◆ George Norton
- ◆ David and Mae Jean Nothstine
- ◆ Renee and James Novakoff
- ◆ Judith L. Nuland, M.S.N., R.N.
- ◆ James L. Nulman
- ◆ O'Donnell Landscapes, Inc.
- ◆ Jim and Carol Oetter
- ◆ Lynn J. O'Hare
- ◆ George and Donna Ohye
- ◆ Olde Cypress
- ◆ Jon and Charleen Olliff
- ◆ OMC Consulting Service International Inc
- ◆ Robert O'Neill
- ◆ Online Computer Library Center, Inc.
- ◆ Glenn P. and Jeanine R. Oorlog
- ◆ Mr. and Mrs. Thomas F. O'Reilly
- ◆ Michael E. Orlandi
- ◆ David and Elaine Orr
- ◆ Margaret Ort
- ◆ Thomas F. and Dorothy L. Orthman
- ◆ David Owen
- ◆ Robert and Shirley Ozycz
- ◆ PC Pro Schools, Inc.
- ◆ P J J D Enterprises, Inc.
- ◆ Amber K. Pacheco
- ◆ Palm Island Resort
- ◆ Park Shore Development
- ◆ Parker/Mudgett/Smith Architects, Inc.
- ◆ Gary and Carlene Pasche
- ◆ David C. Pasco
- ◆ Patricia Pasden
- ◆ Dr. Dennis Pataniczek
- ◆ Patnode Roofing
- ◆ Harriet P. Patterson
- ◆ Paula Robertson & Associates, Inc.
- ◆ Mary S. and Richard A. Paulson
- ◆ Dr. Sandra Pavelka
- ◆ Drs. Peter D. and Regina L. Payne
- ◆ Michael Peceri
- ◆ Rosa and Tim Peck
- ◆ Mr. and Mrs. Vernon E. Peeples
- ◆ Renee Peet
- ◆ Pelican Bay Foundation
- ◆ The Richard Pence Family
- ◆ Peninsula Improvement Corporation
- ◆ Peper, Martin, Jensen, Maichel and Hetlage
- ◆ Georgina Percel
- ◆ Performance Door and Hardware, Inc.
- ◆ Alan and Donna Perkins
- ◆ Chesley "Mike" M. Perry, Sr.*
- ◆ Jill Peterson
- ◆ Kathy Peterson
- ◆ Judith B. and Vincent D. Pettinelli
- ◆ Pettinelli Family Foundation
- ◆ Alex Pezeshkan
- ◆ Phi Delta Kappa-SW Florida Chapter
- ◆ Wendy I. Piascik
- ◆ Pierce, Goodwin, Alexander & Linville
- ◆ Pink Shell Beach Resort
- ◆ Jim and Pat Piquette
- ◆ Anthony and Ricky Pires
- ◆ Dr. Josephine Tutino Polito
- ◆ Marydelle Polk
- ◆ Porter, Wright, Morris & Arthur LLP
- ◆ Christine J. and Bernard N. Portnoy
- ◆ Juanita M. Pray
- ◆ Nathan N. Prefer
- ◆ Preferred Travel
- ◆ Premium Tour & Travel
- ◆ Richard and Doris Price
- ◆ Bobby and Stella Pritchard
- ◆ Estate of Oannes A. Pritzker
- ◆ Private Equity Group, L.L.C.
- ◆ Pro-Tech Caulking & Waterproofing, Inc.
- ◆ Prudential Securities, Incorporated
- ◆ Prudential Village Realty Place
- ◆ Quail West Golf and Country Club
- ◆ Lyle Quaintance
- ◆ R&D Villas, Inc.
- ◆ Dick and Deedee Raby
- ◆ Bruce Ragain
- ◆ Dr. and Mrs. Robert F. Rapp
- ◆ Rautio and Associates, Inc.
- ◆ Larry Ray
- ◆ Raymond James and Associates
- ◆ Peggy Raynor
- ◆ James F. Reddington
- ◆ Mr. and Mrs. Martin A. Redovan
- ◆ Mary Reed
- ◆ Reed, Blackwood & Co., LLC
- ◆ Daniel V. Regelski
- ◆ Eileen F. Regelski
- ◆ Regenesys Power LLC
- ◆ Dale Reiss and Jerome King
- ◆ Monika Renard
- ◆ William and Sheryl Renken
- ◆ Resun Leasing, Inc.
- ◆ Retirement Advisors of America, Inc.
- ◆ Jim and Ann Reutter
- ◆ RFH Consulting, Inc.
- ◆ RG Brown Properties
- ◆ Phillip and Joanne Ricciardiello
- ◆ David A. Rice
- ◆ Tom and Linda Rice
- ◆ John Richards II
- ◆ Mr. and Mrs. Joseph J. Richards
- ◆ Henry Richardson
- ◆ Richter Leadership Fund of the Community Foundation of Collier County
- ◆ Pauline R. Riemer and James R. Burch
- ◆ Right Way Plumbing Company
- ◆ Russell J. Ringland
- ◆ RJ Gators
- ◆ RL Homes
- ◆ Gerald Roberts
- ◆ Charles and Mary Robertson
- ◆ James N. and LaTeshia Robinson
- ◆ Ray Rodrigues
- ◆ Ruth L. Rodrigues
- ◆ Dr. Walter Rodriguez
- ◆ Robbie B. Roepstorff
- ◆ Jenna M. Rogan
- ◆ Anne M. Rogers
- ◆ Cecilia Rokusek
- ◆ Karen A. Rollins
- ◆ Julie Rose Family
- ◆ Dorothea and James Rosner
- ◆ Louis R. Ross
- ◆ Rotary Club of Bonita Springs
- ◆ Alan Routh
- ◆ Todd Routh
- ◆ Royal Scoop Homemade Ice Cream
- ◆ Marjorie Rubacky
- ◆ Esta and Alan Rubinstein
- ◆ Andrew Rudd
- ◆ Dr. and Mrs. Luis A. Ruilova
- ◆ Ruth Messmer Florist, Inc.
- ◆ Linda Ryan
- ◆ Robert and Cinda Ryan
- ◆ Ryder Orthopaedics, Inc
- ◆ Safari Club International - Naples/ Fort Myers Chapter
- ◆ Saks Fifth Avenue
- ◆ Sakinah Salahu-Din
- ◆ Dr. and Mrs. Edward W. Salko
- ◆ SallieMae, Inc.
- ◆ Sam Galloway Ford
- ◆ Irma L. Sanchez
- ◆ Alan and Linda Sandlin
- ◆ Sanibel Captiva Conservation Foundation
- ◆ Sanibel Captiva Rotary Trust Fund
- ◆ Donald A. Sanneman
- ◆ Thomas Sansbury
- ◆ Rebecca Sarver
- ◆ Pete and Marilyn Savalli
- ◆ Michael L. Savarese and Mona Wright
- ◆ Steve Scheff
- ◆ Dennis Schehr
- ◆ Cheryl A. Scheiner
- ◆ Harvey Schestag
- ◆ Ken Schexnayder
- ◆ Diane Schmidt
- ◆ Ian Schmoyer
- ◆ Richard Schnackenberg and John Gibbons
- ◆ Ron R. and Mary Jane Schneider Family Foundation, Inc.

>> HONOR ROLL OF DONORS

- ◆ Jerry Schoenfeld
- ◆ Mrs. Lester J. Scholl - In Memory of Lester J. Scholl
- ◆ Hank Schroeder
- ◆ Mr. David Schwab
- ◆ Mr. and Mrs. Samuel Schwartz
- ◆ Barbara and Will Scott
- ◆ Jacob L. Scott
- ◆ Patricia Scott
- ◆ Dr. and Mrs. Roger D. Scott
- ◆ SCT Software & Resource Management Corporation
- ◆ Cheryl Seals-Gonzalez
- ◆ Pamella A. Seay
- ◆ Chalmers and Beatrice Sechrist
- ◆ Lee and Gene Seidler
- ◆ Jim Seitz
- ◆ Seventh Street REIT, Inc
- ◆ Shamrock Building Services
- ◆ Sheeley Architects, Inc.
- ◆ Martin J. and Betteann L. Sherman
- ◆ The Sherwin-Williams Company
- ◆ Irving F. and Lee Sherwood
- ◆ Dr. and Mrs. Allen B. Shevach
- ◆ SI Ventures
- ◆ Siemens Healthcare Diagnostics
- ◆ The SIFCO Foundation
- ◆ Dr. Miriam Silver
- ◆ Anne M. Simon
- ◆ Simonsen-Hickok Interiors of Naples, Inc.
- ◆ Mark W. Simpson and Sheila A. Bolduc-Simpson
- ◆ Dr. and Mrs. C. Norton Sims
- ◆ Ronald Sisson
- ◆ Roger Sitkins
- ◆ Sitkins Group
- ◆ Nancy and Ronald Skabar
- ◆ Carrie Skifton
- ◆ Paula Sklodowski
- ◆ Slavich & Associates
- ◆ SlingPage, Inc.
- ◆ Virginia and Robert Small
- ◆ Audrey J. Smandra
- ◆ Cynthia S. and Eugene H. Smith
- ◆ David and Sandy Smith
- ◆ The Howard Smith Family
- ◆ Mr. and Mrs. Michael R. Smith
- ◆ Wade and Carol Smith
- ◆ Mr. and Mrs. William C. Smith
- ◆ Smith, Hendra & Gerson PA
- ◆ Susanna Smith-Wohlpert
- ◆ Ken Sneed & Associates
- ◆ Neal L. Snyder
- ◆ Richard and Janet Somerlott
- ◆ Sony
- ◆ Larry and Eileen Southard
- ◆ South Florida Bank
- ◆ Southeast Mechanical Contractors, LTD
- ◆ Southern Gulf Coast Chapter of the Oncology Nursing Society
- ◆ Southwest Florida Branch of ASCE
- ◆ SouthWest Direct
- ◆ The Southwest Florida Attractions Association
- ◆ The Southwest Florida Conchologist Society, Inc.
- ◆ Southwest Florida Consolidated Services
- ◆ Southwest Florida Gator Club
- ◆ Southwest Florida Hispanic Chamber of Commerce
- ◆ Southwest Florida Oral & Facial Surgery
- ◆ Southwest FL Osteopathic Medical Assoc.
- ◆ Southwest Florida Urologic Associates
- ◆ Southwest Student Services Corporation
- ◆ Mark Spafford
- ◆ Mr. and Mrs. Stephen J. Spahr
- ◆ Jennifer and Richard Sparrow
- ◆ Spartan Masonry, LLC
- ◆ John and Lisa Spear
- ◆ Dr. and Mrs. K. L. Spear
- ◆ Specialists in Reproductive Medicine and Surgery, P.A.
- ◆ Spectra Contract Flooring
- ◆ C. Rae Spencer
- ◆ Spinal Cord Group of SW Florida, Inc.
- ◆ Virginia W. Splitt
- ◆ Sports Masters International, Inc.
- ◆ James D. Spounias
- ◆ Jim and Patty Sprinkle
- ◆ Sprint PCS
- ◆ Mr. and Mrs. John M. Stafford
- ◆ Jeffrey Staner
- ◆ John G. and Patricia K. Starling
- ◆ Hugh E. and Judy Starnes
- ◆ State Wide Real Estate of Escanaba
- ◆ Bill Stauffer
- ◆ Steel Fabricators, LLC
- ◆ Steel, Hector & Davis, LLP
- ◆ Stellar Venture Partners, LLC
- ◆ Sterling Prestress, Inc.
- ◆ Barbara and Bill Stewart
- ◆ Thomas L. Stewart
- ◆ Larry Stiles
- ◆ Barbara J. Stites
- ◆ Carole Stockard
- ◆ Dr. and Mrs. Charles A. Stokes
- ◆ Steven L. and Dina H. Stolz
- ◆ Judith Stonecash
- ◆ Patricia Stratton
- ◆ Jerome M. Strauss
- ◆ Stroemer & Company, PA
- ◆ Fran and Ray Strohm
- ◆ Gretta Styles
- ◆ Reverend and Mrs. Israel Suarez
- ◆ Suffolk Construction Company
- ◆ Brian and Margaret Sullivan
- ◆ Linda S. Summers
- ◆ Suncoast Advanced Radiology Associates, P.A.
- ◆ Suncoast Dental Center, P.A.
- ◆ Sunniland Family Limited Partnership
- ◆ Surveying and Mapping, Inc.
- ◆ Suttie Golf School
- ◆ James and Susan Sweeney
- ◆ SW Florida Chinese Language School, Inc.
- ◆ SWF Culinary Alliance
- ◆ SW Florida Council for Environmental Education
- ◆ Robert and Linda Swank
- ◆ SWS Charitable Foundation, Inc.
- ◆ Madeleine R. Taeni
- ◆ Target Stores, Inc.
- ◆ Tarpon Coast National Bank
- ◆ John Tartaglia
- ◆ Lisa Adele Tashjian
- ◆ Tami Tassler
- ◆ Tavilla Realty Associates
- ◆ Taylor Woodrow Communities
- ◆ Ten - United
- ◆ George and Zenaida Theopistos
- ◆ Thermal Concepts, Inc.
- ◆ Dale and Sue Thomas
- ◆ Gary L. Thomas
- ◆ James A. and Barbara A. Thomas
- ◆ Peter A. Thomas
- ◆ Steven L. Thomas
- ◆ Edward S. Thompson
- ◆ Marion Thompson
- ◆ Michael W. Thompson
- ◆ Van and Regina Thompson
- ◆ M. Joyce Thornton
- ◆ Joan Timmons
- ◆ Dr. and Mrs. Benjamin K. Tipton
- ◆ Titan Custom Homes, Inc.
- ◆ Title Connection, LLC
- ◆ Rucker Todd
- ◆ Todd and Wendy Tooley
- ◆ Patrick and Kathryn Tooman
- ◆ The Jacquie Toth Family
- ◆ Gary and Gay Trippe
- ◆ Tropical Smoothie Cafe
- ◆ Mr. and Mrs. Steve Trudnak
- ◆ Mr. and Mrs. Elliott A. Trumbull
- ◆ Marianne A. Tucker
- ◆ Mary E. Tucker and John Grim
- ◆ Fred Hirschowitz/Twenty/Twenty Worldwide Hospitality, LLC
- ◆ TWH Southwest Florida Division, LLC
- ◆ TwinEagles Golf & Country Club
- ◆ UBS Foundation USA Matching Gift Program
- ◆ U.S. Home Corporation
- ◆ Ulmer Construction, Inc.
- ◆ United Plastering
- ◆ United States Tennis Association - Florida Section, Inc.
- ◆ USA Funds
- ◆ Useppa Island Club
- ◆ Mr. and Mrs. Tom Valentine
- ◆ Thomas Valesky
- ◆ Stuart Van Auken
- ◆ John and Connie Vandenberg
- ◆ Everett H. and Alice L. Van Hoesen
- ◆ Sarita Van Vleck
- ◆ Holly A. Vaughn
- ◆ The Venetian
- ◆ Gina C. Ventresca
- ◆ Richard J. Vigoda
- ◆ Kimberly K. Vincent
- ◆ Robert and Lois Vines
- ◆ Visual Aids Electronics Corporation
- ◆ Charlie Vitale
- ◆ Aswani K. Volety
- ◆ Ara and Joy Volkan
- ◆ Zola and Jerry Von Deylen
- ◆ Mary S. Voytek
- ◆ Joseph and Lee Vumbacco
- ◆ Dr. Patricia Wachholz
- ◆ Jane Wagner
- ◆ Wal-Mart Foundation
- ◆ Wal-Mart Stores, Inc.
- ◆ Walker Parking Consultants
- ◆ Dr. Roberta W. and Richard J. Walsh
- ◆ Deborah Ward
- ◆ Valmore L. Ward*
- ◆ Charles W. B. Wardell, Jr.
- ◆ Rodney L. and Helen M. Warden
- ◆ Waste Pro
- ◆ Water Enhancement & Restoration Coalition, Inc.
- ◆ Waterfront Realty Group, Inc.
- ◆ Waterside Shops at Pelican Bay
- ◆ Susan Watts
- ◆ Wayne Martin & Son
- ◆ Charles and Paula Weaver
- ◆ Weeks & Associates, Inc.
- ◆ Michael Weiler
- ◆ Vi and Jerry Weis
- ◆ A.H. & Helen L. Weiss Foundation
- ◆ Weller Pool Constructors
- ◆ W. Robert Welliver
- ◆ Mr. and Mrs. Robert Wells
- ◆ Wells Fargo Home Mortgage
- ◆ Wentzel, Berry & Wentzel, & Phillips, P.A.
- ◆ Beth and Jeff Wessel
- ◆ Cynthia West
- ◆ West Bay Realty, Inc.
- ◆ Rebecca A. Westerhold
- ◆ Harold A. Westervelt
- ◆ Dick Westfall
- ◆ Claudine Wetzal
- ◆ WFTX-TV Fox 4
- ◆ WGCU FM 90.1
- ◆ Bill and Betty Whitaker
- ◆ Mrs. John Whitcomb
- ◆ David and Kathleen Whitcomb
- ◆ Michael White
- ◆ Marian and Gary Whitehouse
- ◆ Mr. and Mrs. Michael A. Wick
- ◆ Wiebel, Hennells & Carufe P.A
- ◆ Mrs. Lawrence M. Wier
- ◆ Lula C. Wiggins
- ◆ Wilkison & Associates, Inc.
- ◆ The Williams Family
- ◆ Richard P. Williams
- ◆ Trudi Williams
- ◆ Richard and Ellen Williamson
- ◆ George W. Wilson
- ◆ Wiltshire, Whitley, Richardson & English, CPA
- ◆ Dr. Terry Wimberley
- ◆ Winfield Companies, LC
- ◆ John R. Winfield
- ◆ Roger L. and Velda Winkler
- ◆ Charles and Melanie Winton
- ◆ Donald R. Witter, Jr.
- ◆ Jim and Sasha Wohlpert
- ◆ Kevin Wolf
- ◆ Dr.* and Mrs. William A. Wolffer
- ◆ Wolverine II, Inc.
- ◆ Woods & Wetlands, Inc.
- ◆ Edward Wotitzky
- ◆ Mr.* and Mrs. Leo Wotitzky
- ◆ Mr. and Mrs. Corbin Wyant
- ◆ Harold L. Wyman Foundation, Inc.
- ◆ Yamron Jewelers
- ◆ John Yasinsky
- ◆ Tony and Maxine Yates
- ◆ William P. and Vernadean Yeary
- ◆ YMCA, Collier County
- ◆ Yoder Brothers, Inc.
- ◆ William N. York
- ◆ Anne C. Young
- ◆ Young, Van Assenderp & Varnadoc
- ◆ Youssef Financial Services Inc
- ◆ Steve and Lisa Zahorian
- ◆ Patricia Zehr
- ◆ Robert and Connie Ziegler
- ◆ Zeta Tau Alpha Foundation, Inc.
- ◆ ZHA, Inc.
- ◆ Lisa Zidek
- ◆ Roger and Kathleen Zocki

* Deceased



**Florida Gulf Coast University
Foundation, Inc.**
10501 FGCU Boulevard S.
Fort Myers, FL 33965-6565

NON-PROFIT ORG.
U.S. POSTAGE
PAID
FT. MYERS, FL
PERMIT NO. 498

